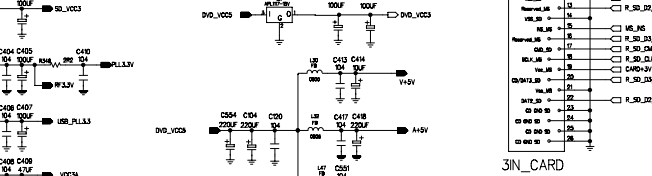
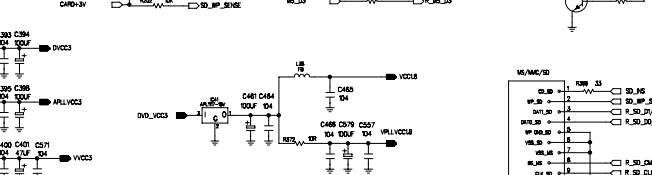
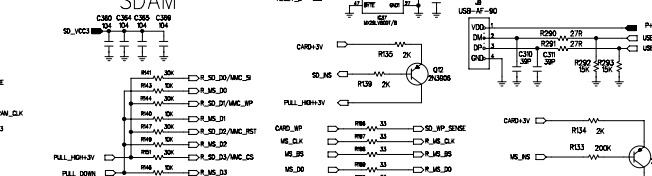
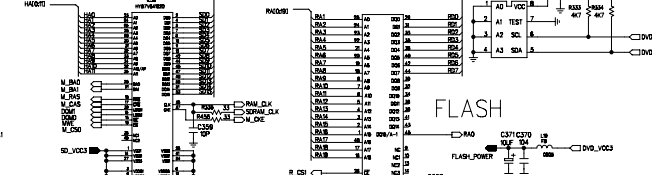
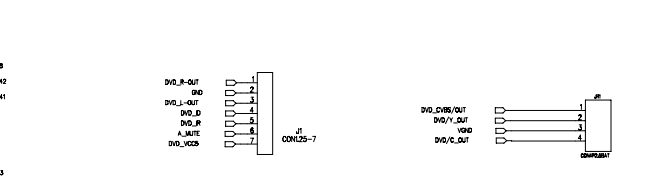
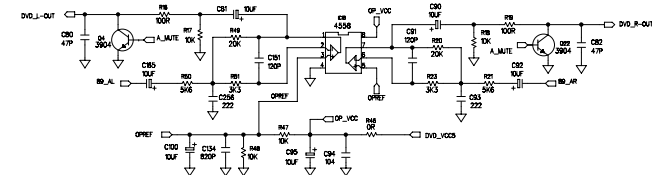
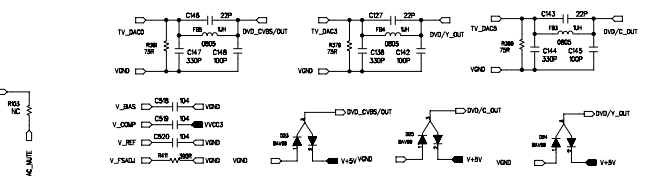
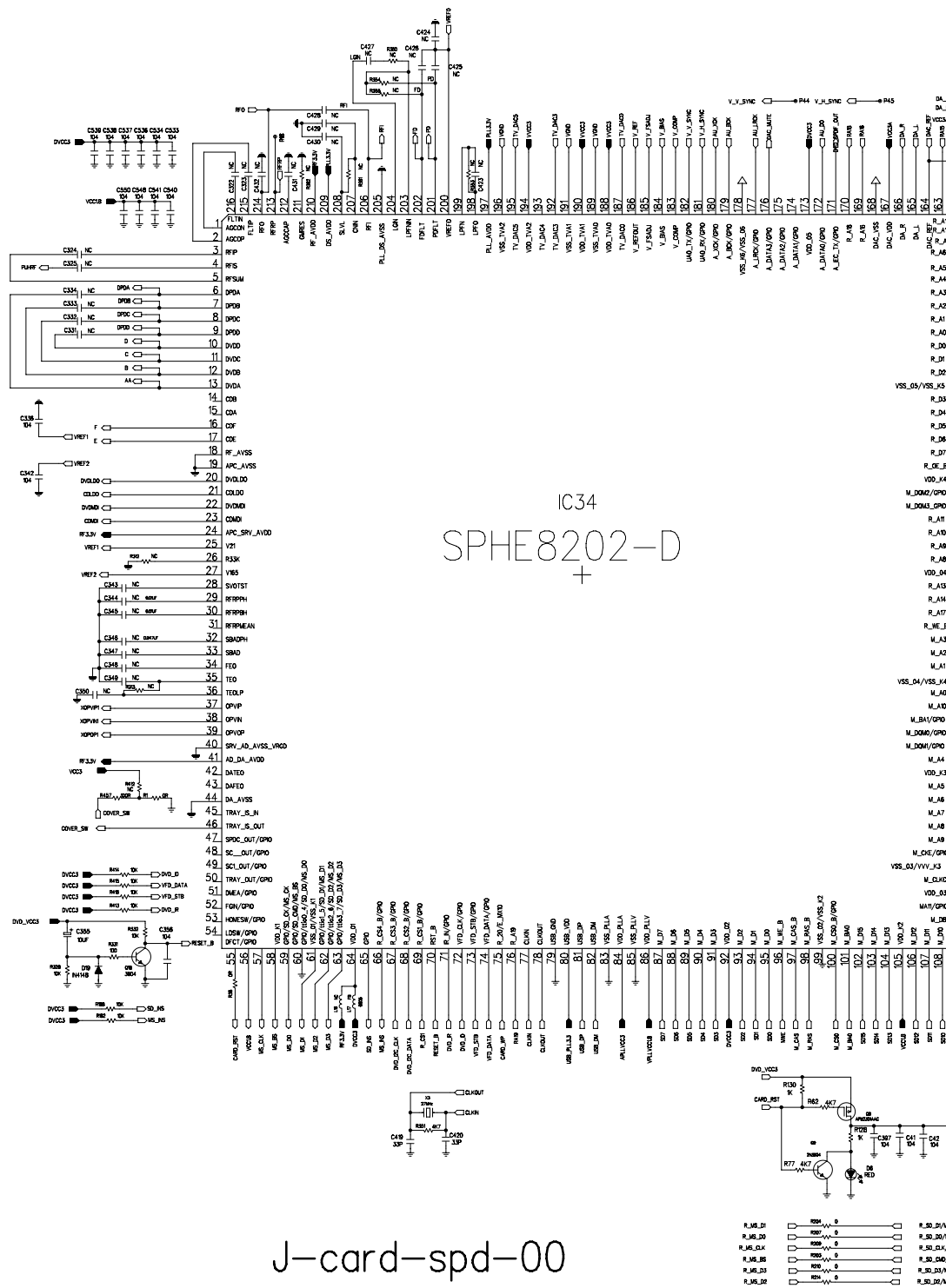


11	TURN BRACKET	1
10	ANTENNA	1
9	SCREW PA ϕ 2.0*10.0	10
8	BACK-CAB	1
7	KEY	1
6	MID-COVER	1
5	SMALL-PCB	1
4	SCREW KA ϕ 2.0*6.0	10
3	MAIN-PCB	1
2	8" TFT	1
1	TOP-CAB	1
NO	DFSCRIPTION	UNIT

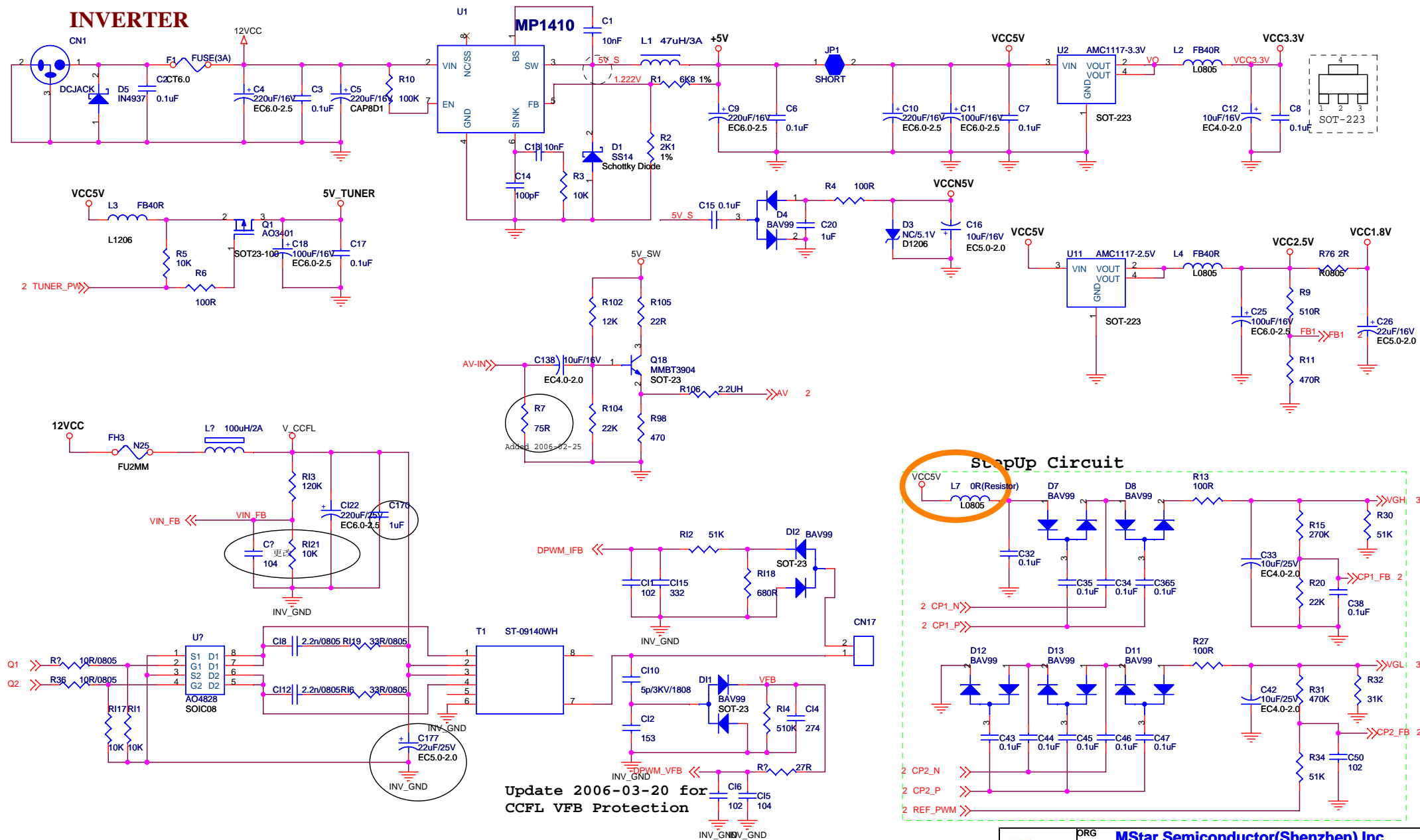
ITEM	SIGN	DATE	NAME	ITEM	
DRAWER	SongHuan	2006. 12. 11	CTV-7010	SCALE	
CHECKER				UNIT	
ASSESSOR			MAT.		A4

Spare Parts List (CTV-7010)

Item	Description	QTY	Part №(КодЗЧД=НомерЗЧД)
1	TOP-CAB	1	CTV-7010-1
2	8" TFT	1	CTV-7010-2
3	MAIN PCB	1	CTV-7010-333
4	SCREW KA2,0x6,0	10	CTV-7010-4
5	SMALL-PCB	1	CTV-7010-5
6	MID-COVER	1	CTV-7010-6
7	KEY	1	CTV-7010-7
8	BACK-CAB	1	CTV-7010-8
9	SCREW PA2,0x6,0	10	CTV-7010-9
10	ANTENNA	1	CTV-7010-10
11	TURN BRACKET	1	CTV-7010-11
12	BRACKET	1	CTV-7010-12
13	AXIS	2	CTV-7010-13
14	SPEAKER	2	CTV-7010-14
15	REMOTE LENS-PCB	1	CTV-7010-15
16	POWER KNOB	1	CTV-7010-16
17	REMOTE LENS	1	CTV-7010-17
	Remote Control	1	CTV-7010-18
	AC Adapter(12v 1,2A)	1	FJ-SW1260X

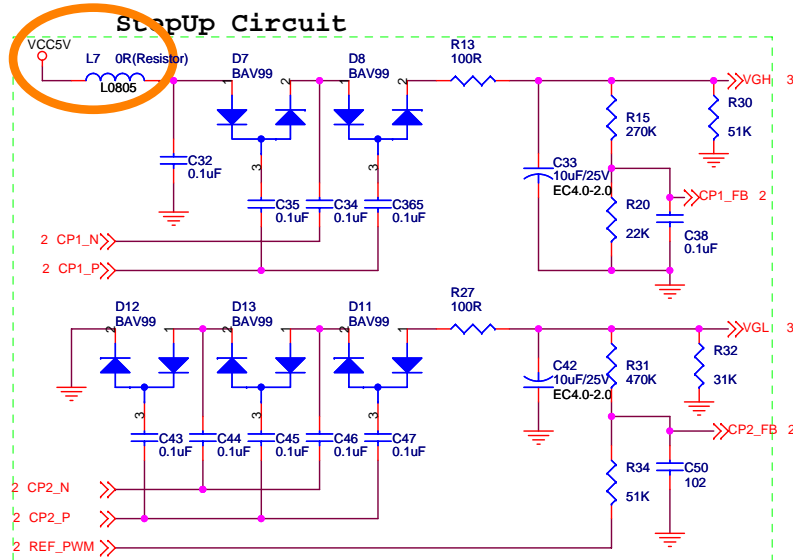


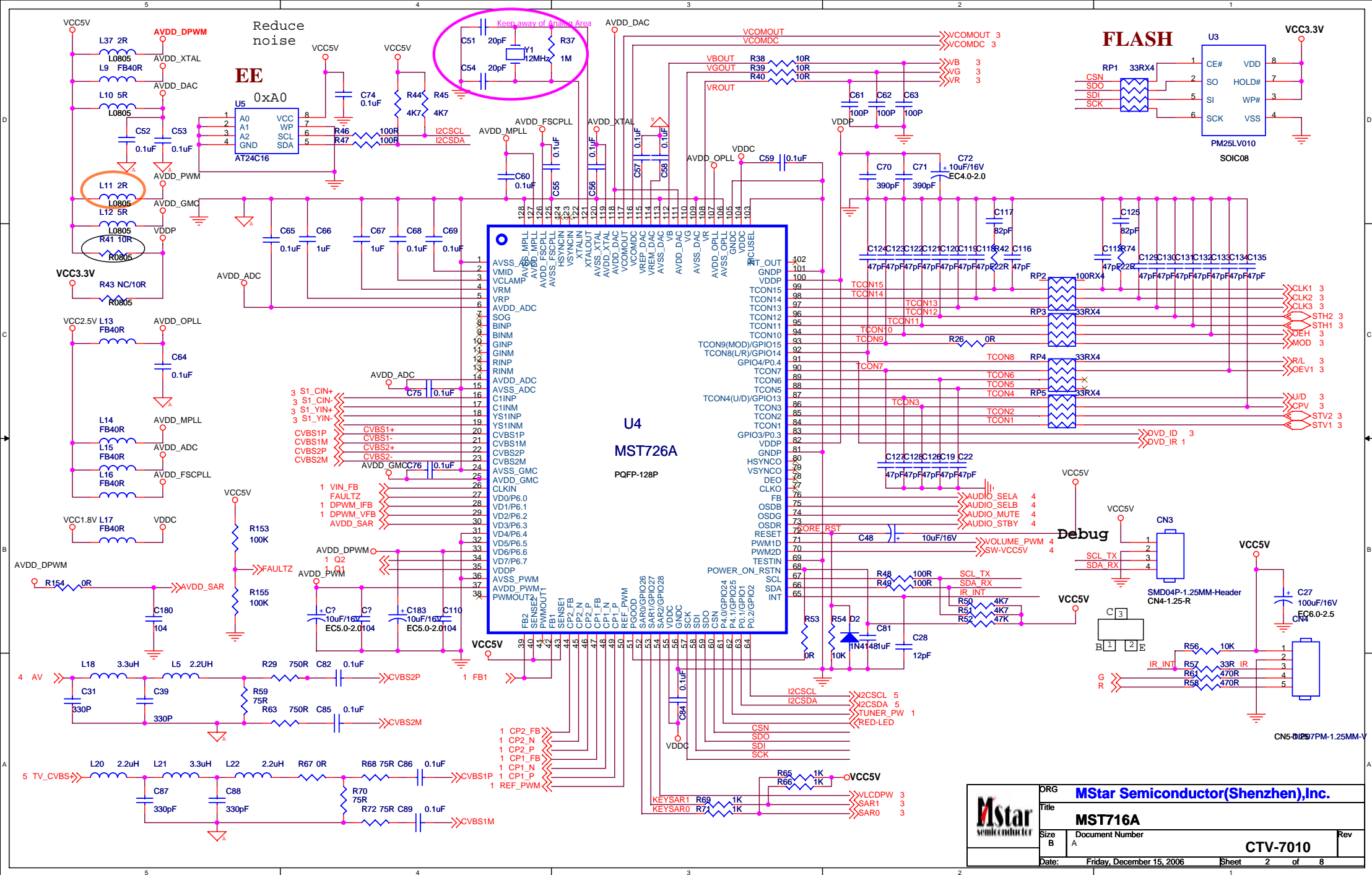
INVERTER

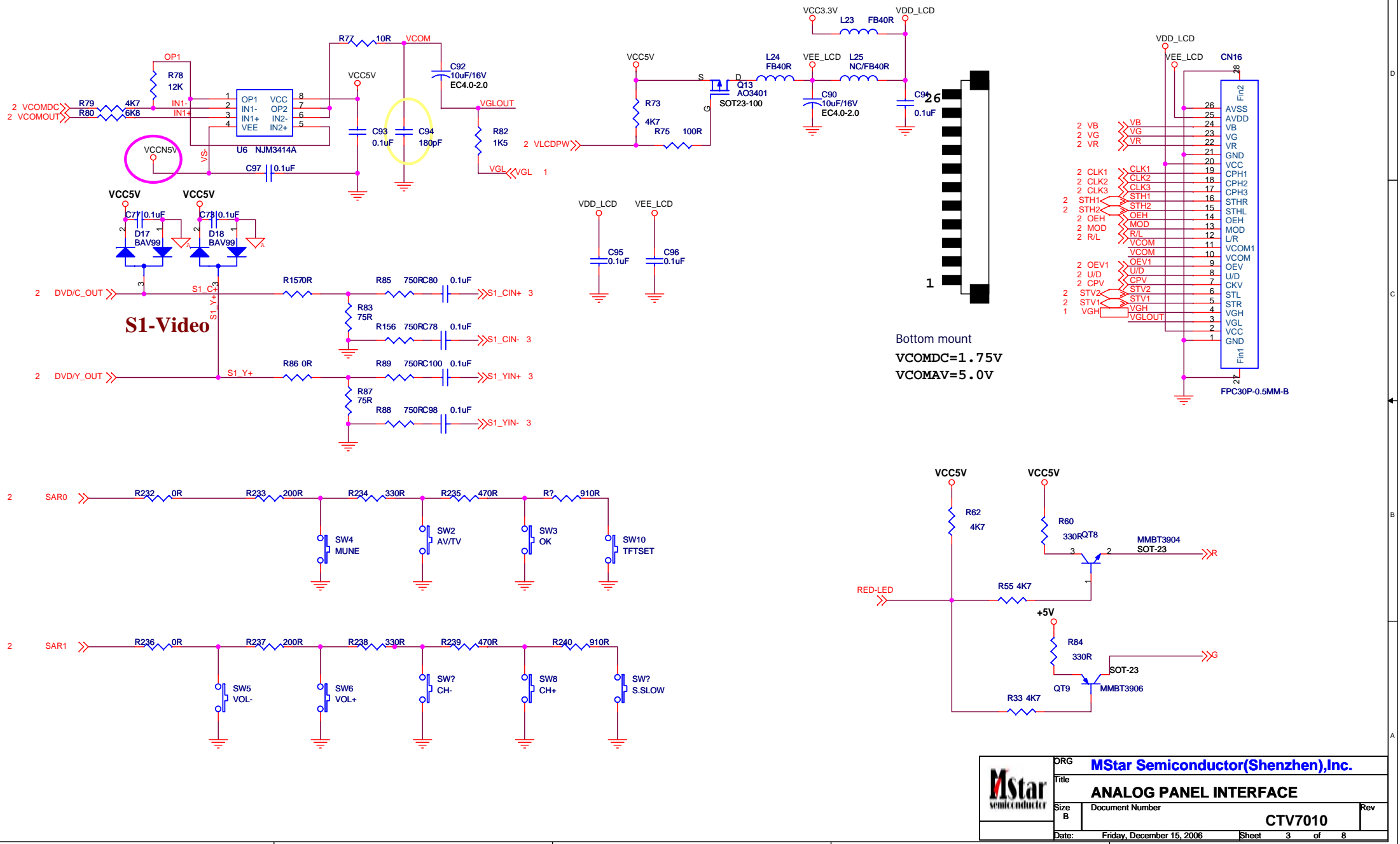


Update 2006-03-20 for
CCFL VFB Protection

StepUp Circuit



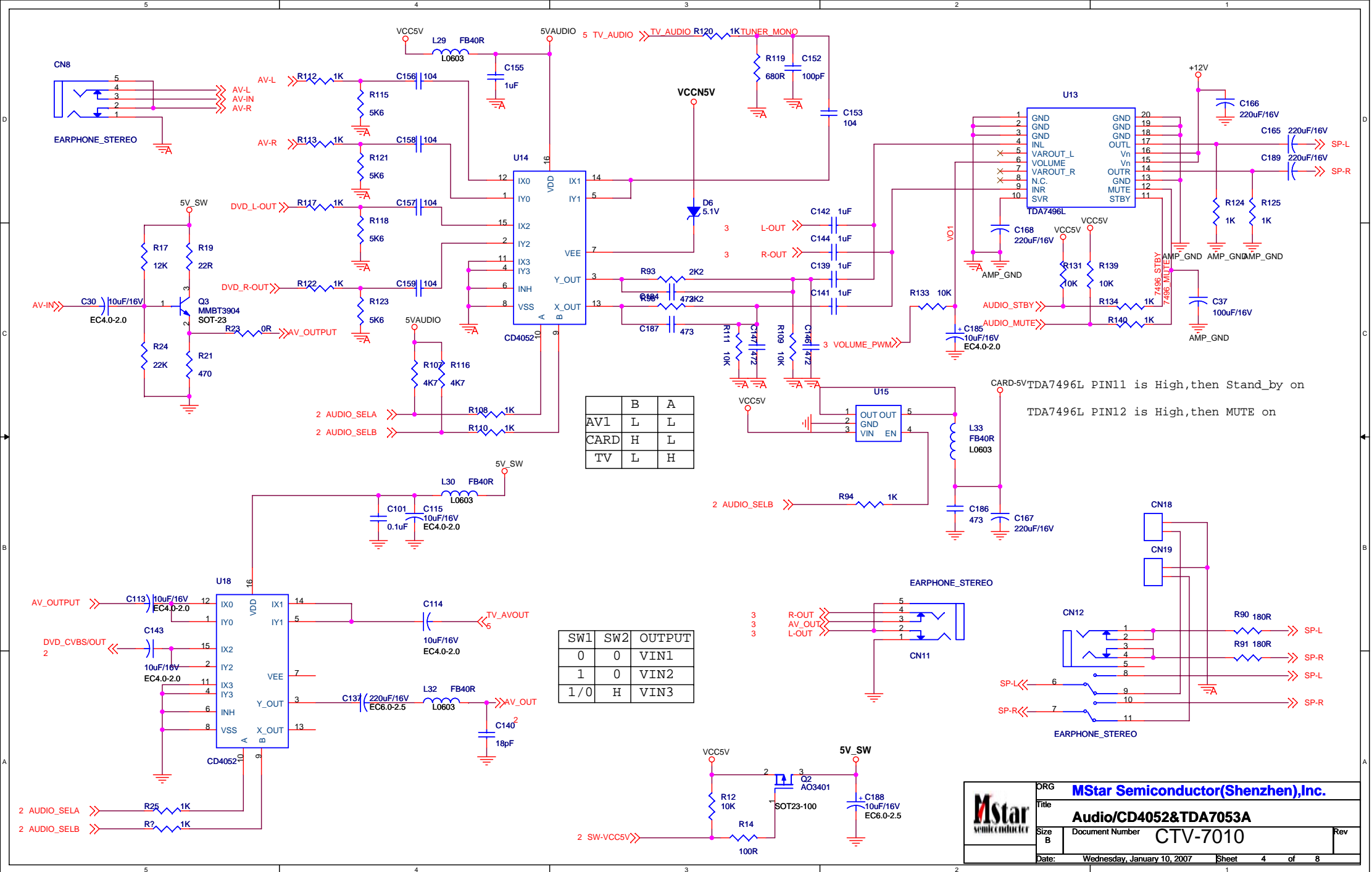


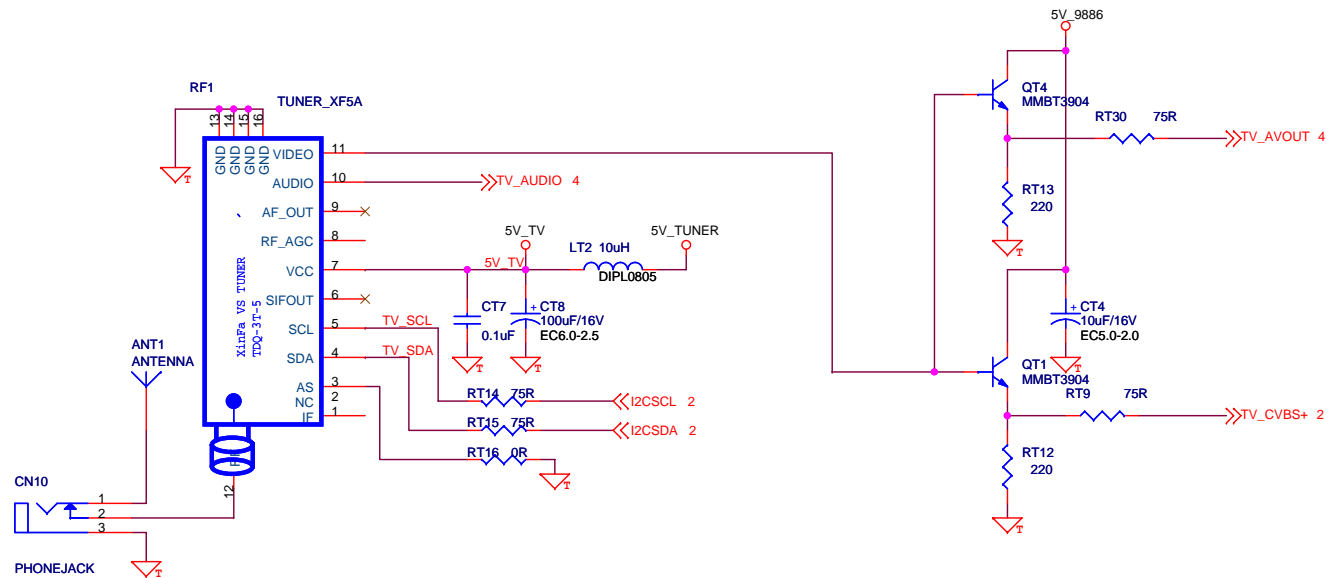



Bottom mount
VCOMDC=1.75V
VCOMAV=5.0V

	ORG MStar Semiconductor(Shenzhen),Inc.		
	Title ANALOG PANEL INTERFACE		
	Size B	Document Number	Rev
	Date: Friday, December 15, 2006		Sheet 3 of 8

CTV7010

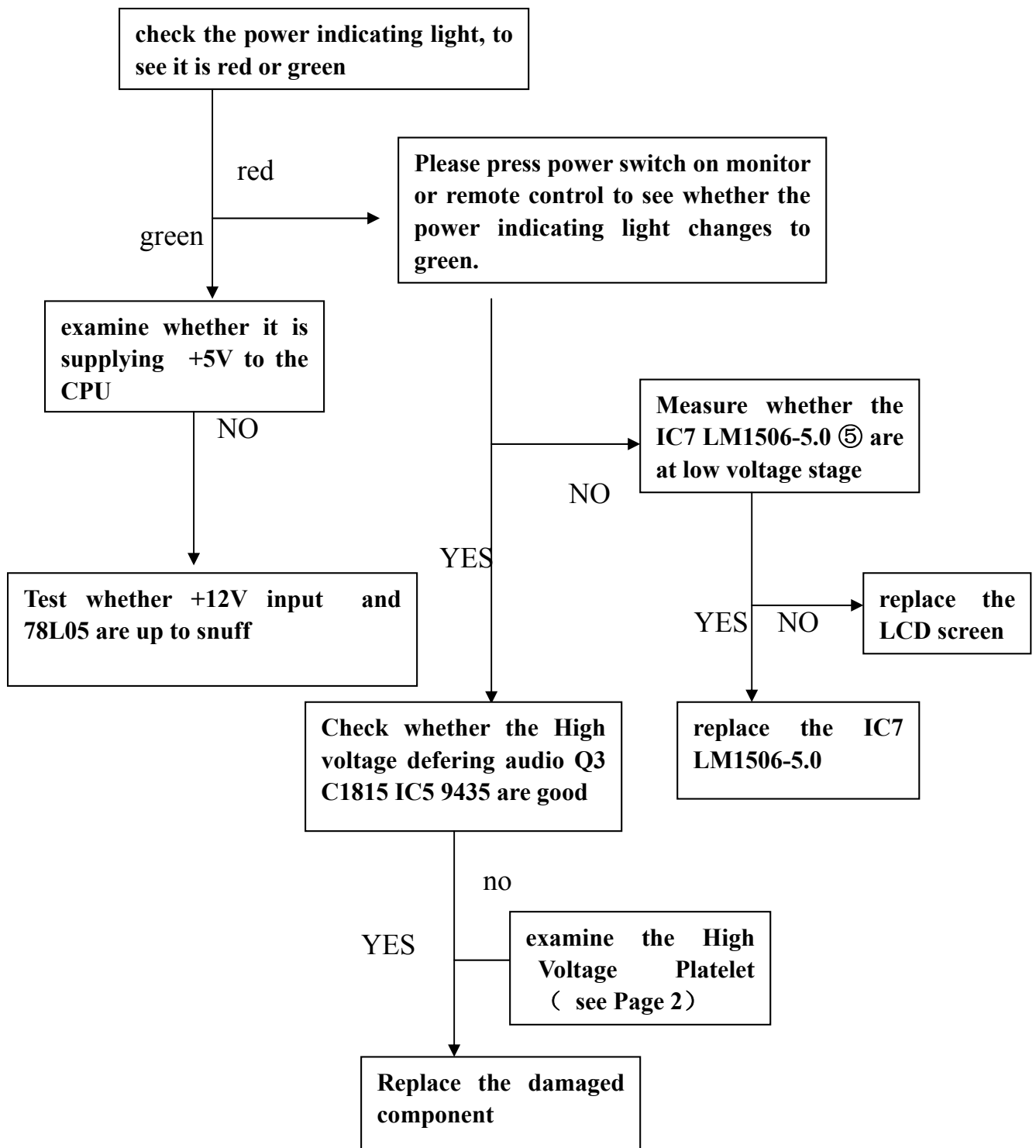




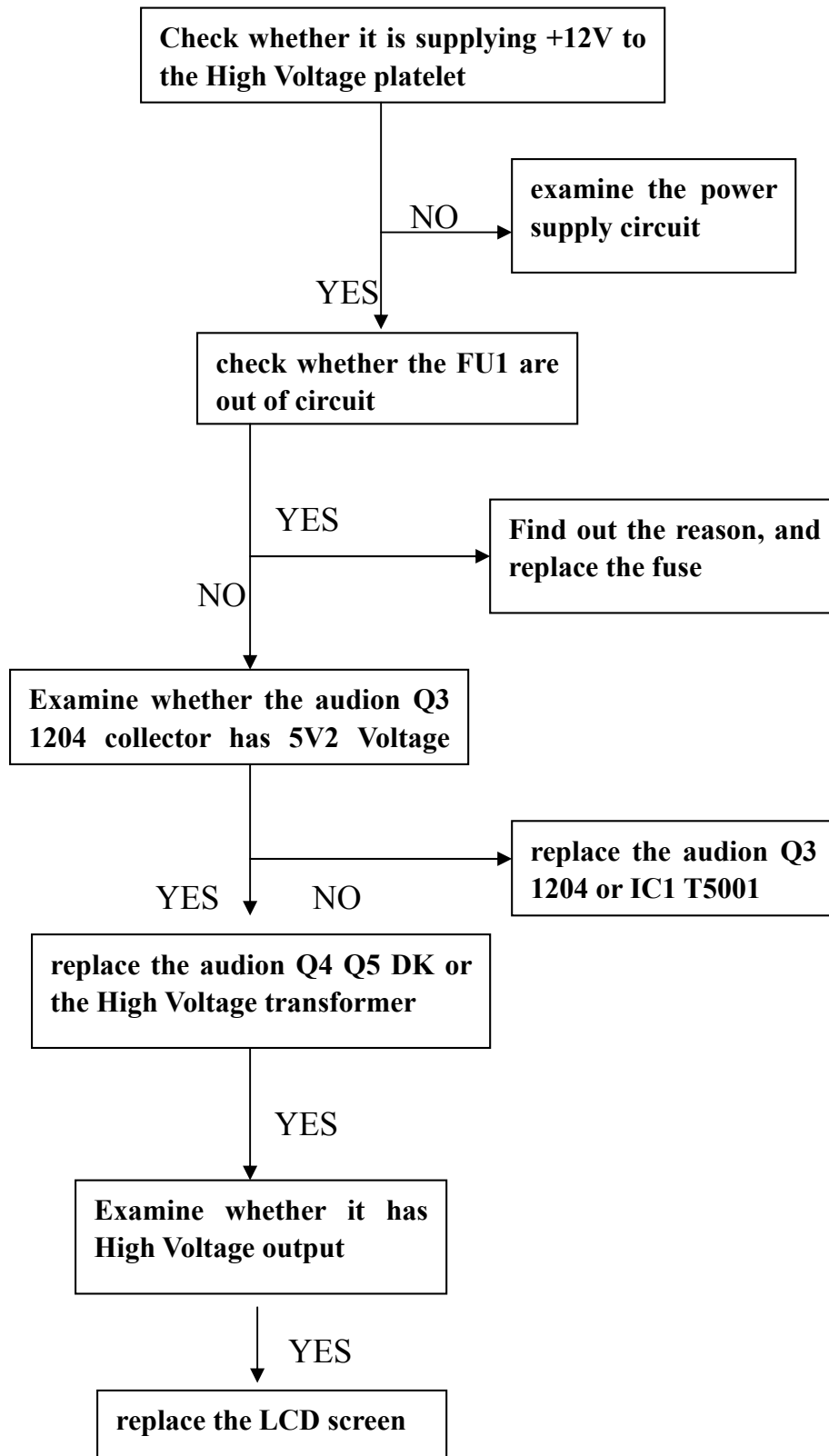
	ORG	MStar Semiconductor(Shenzhen),Inc.		
	Title	Tuner/XF5A&TDA9886T		
	Size	Document Number	CTV-7010	Rev
	B			
Date:		Friday, December 15, 2006	Sheet	5 of 8

CTV-7010 maintain instruction

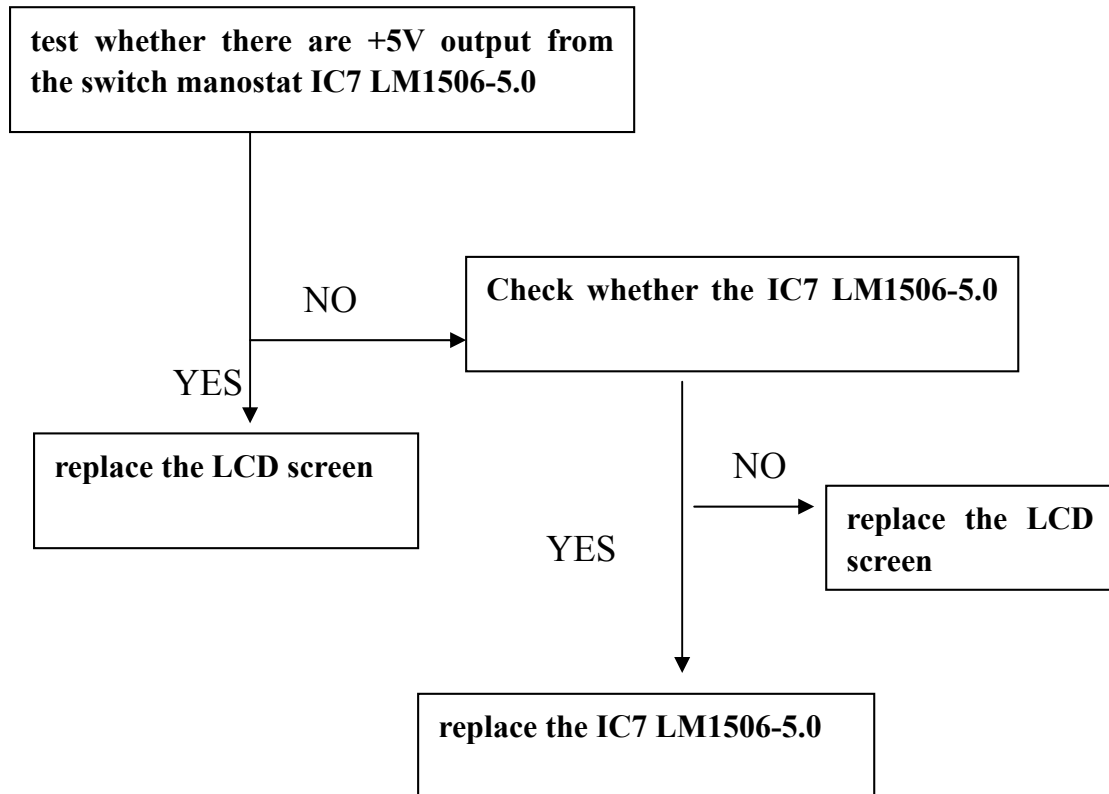
1. symptom: no sound, no image and no light, maintain steps:



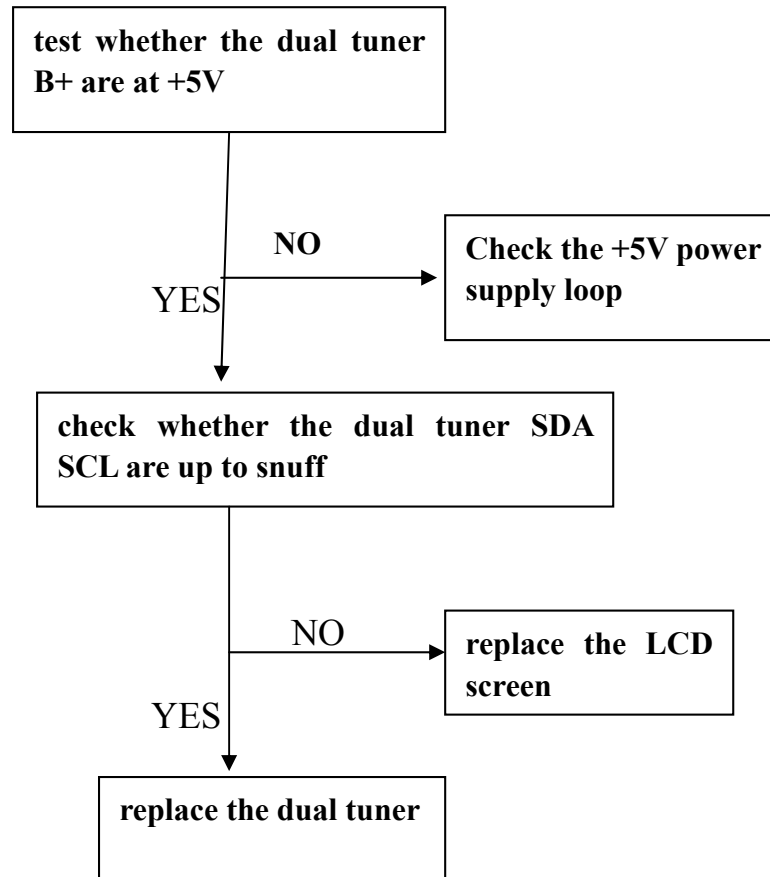
2、 symptom: well-balance of sound and light, but black screen, maintain steps:



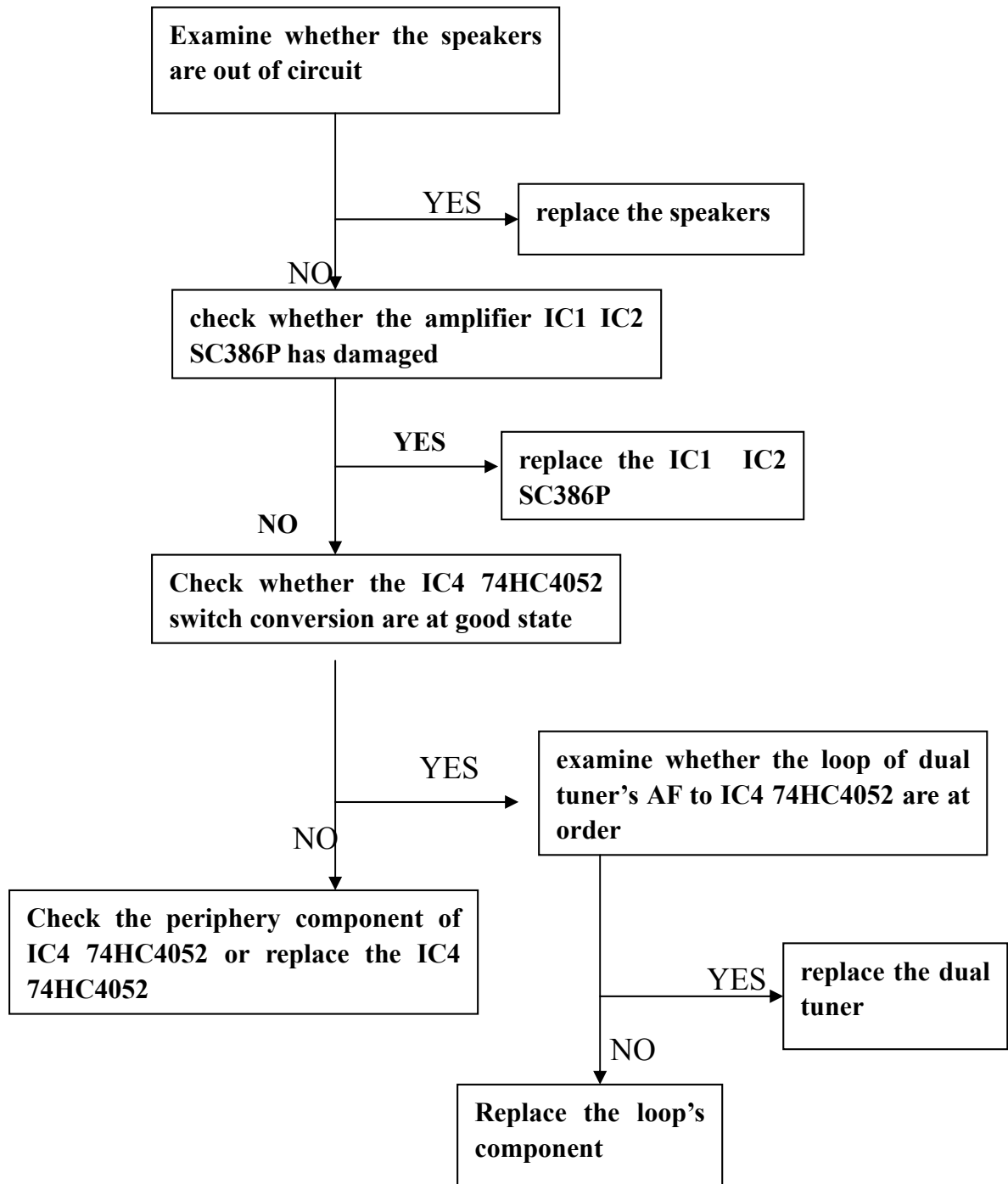
2. Symptom: white light, maintain steps:



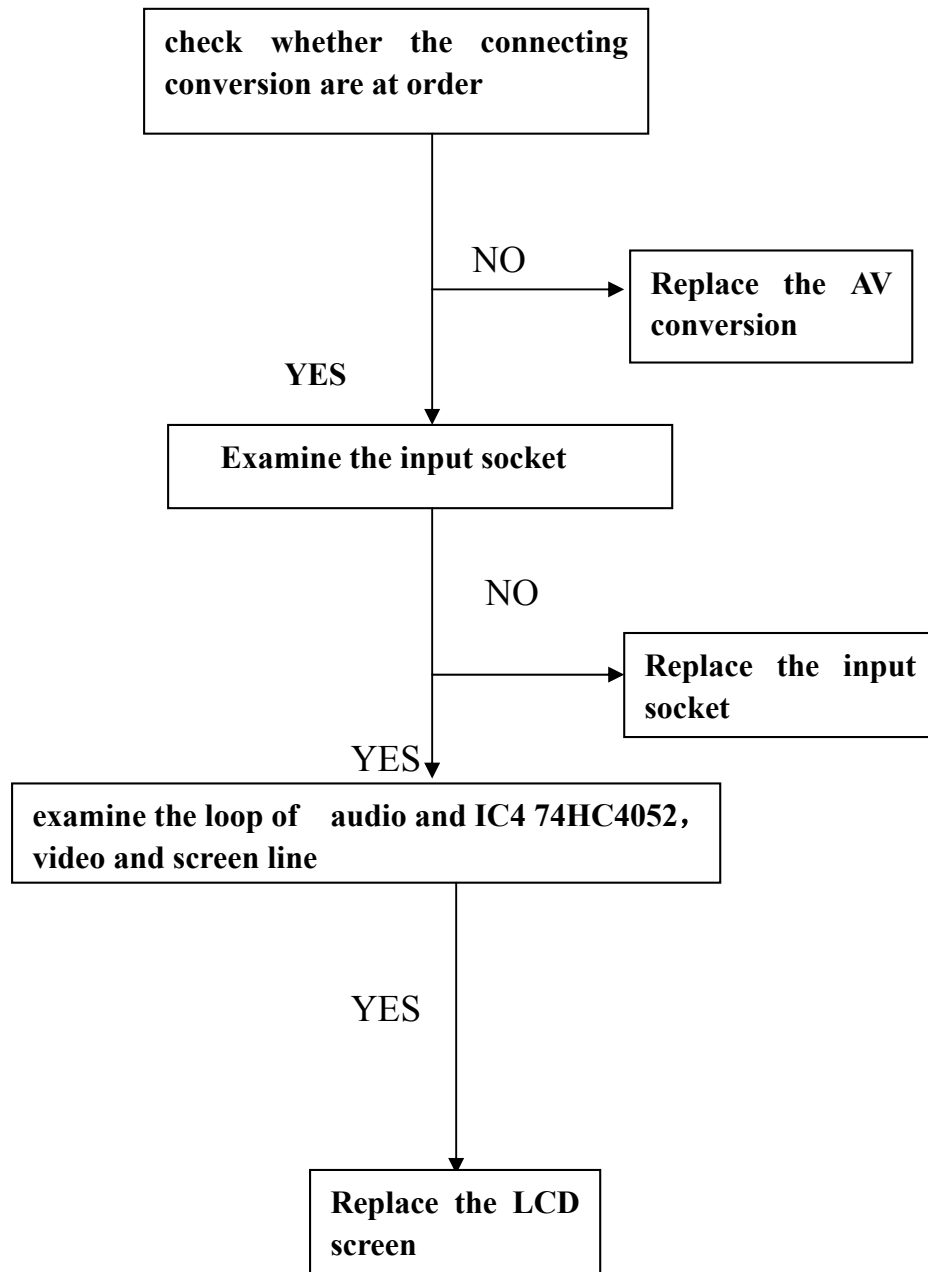
4、 symptom: no signal, maintain steps:



**5. Syptom: no image, no sound, sound unclearly, distortion,
maintain steps:**

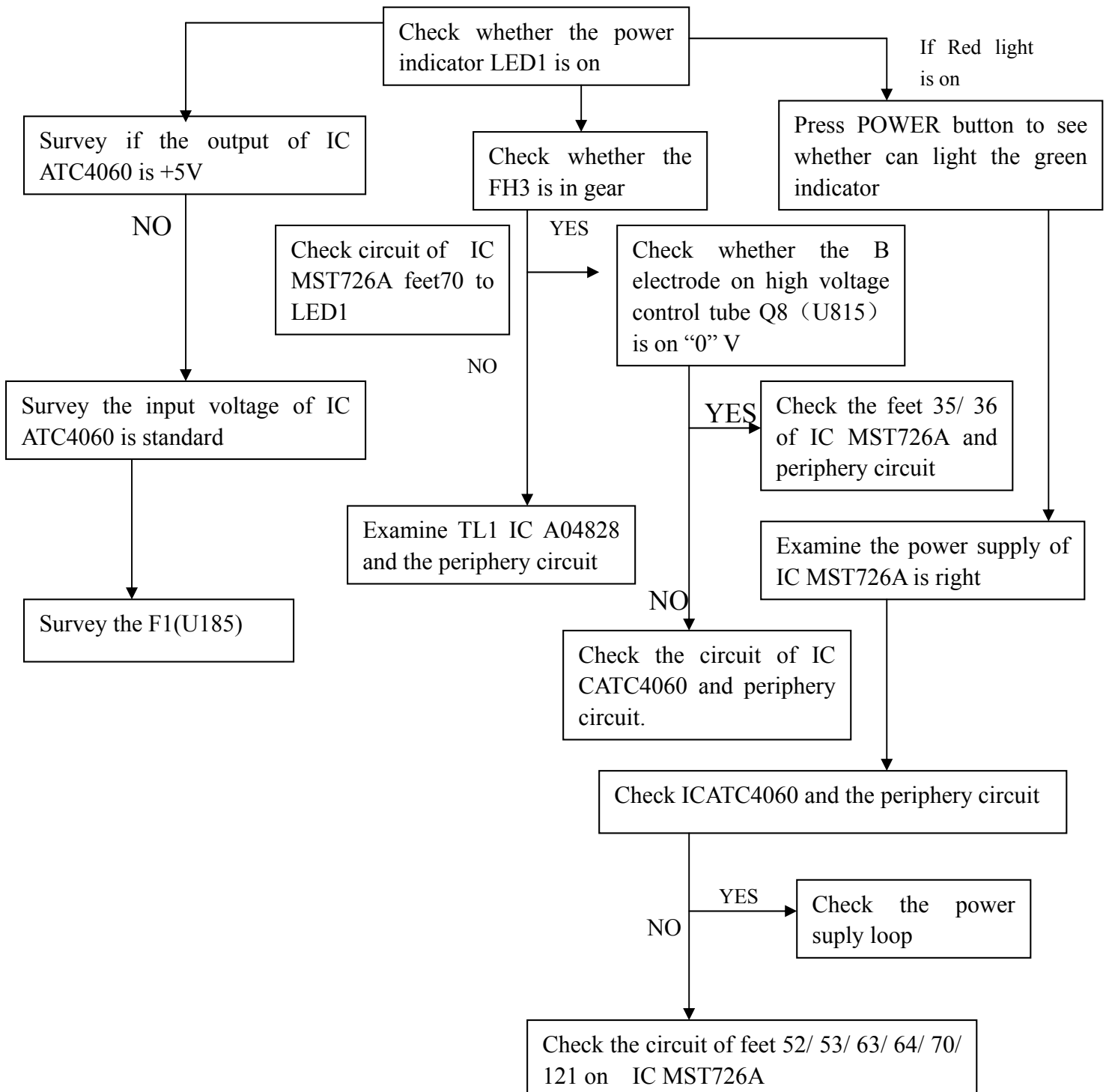


6、 symptom: AV no image or no sound, maintain steps:

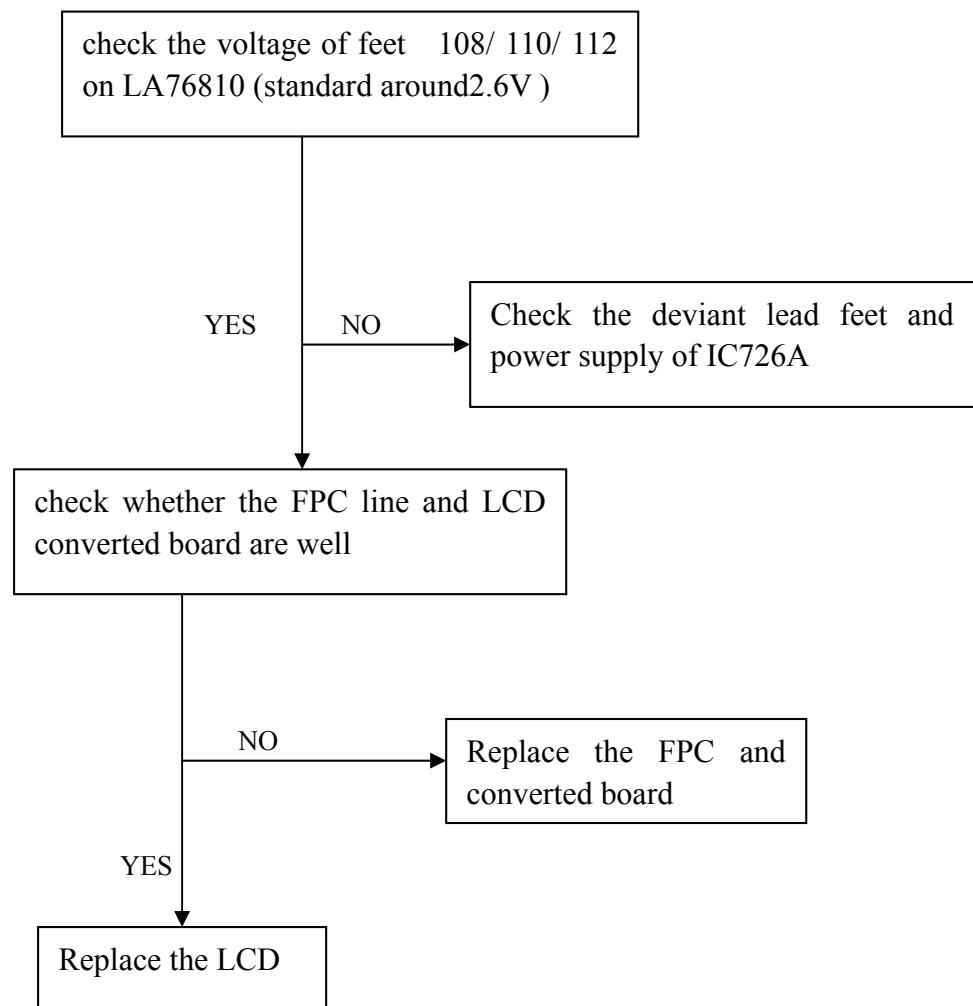


maintain instruction

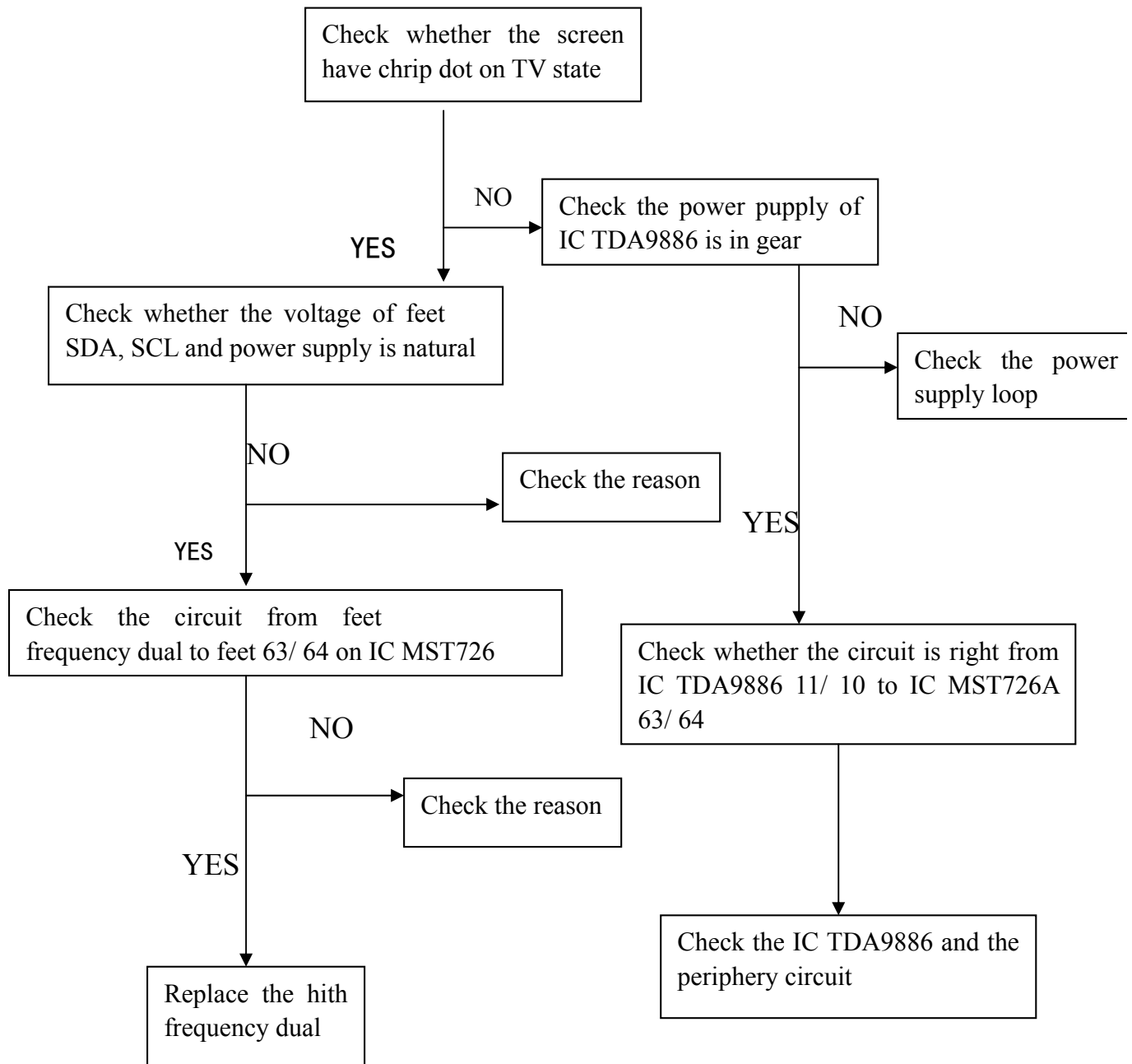
1. symptom: no sound, no image and no light, maintain steps:



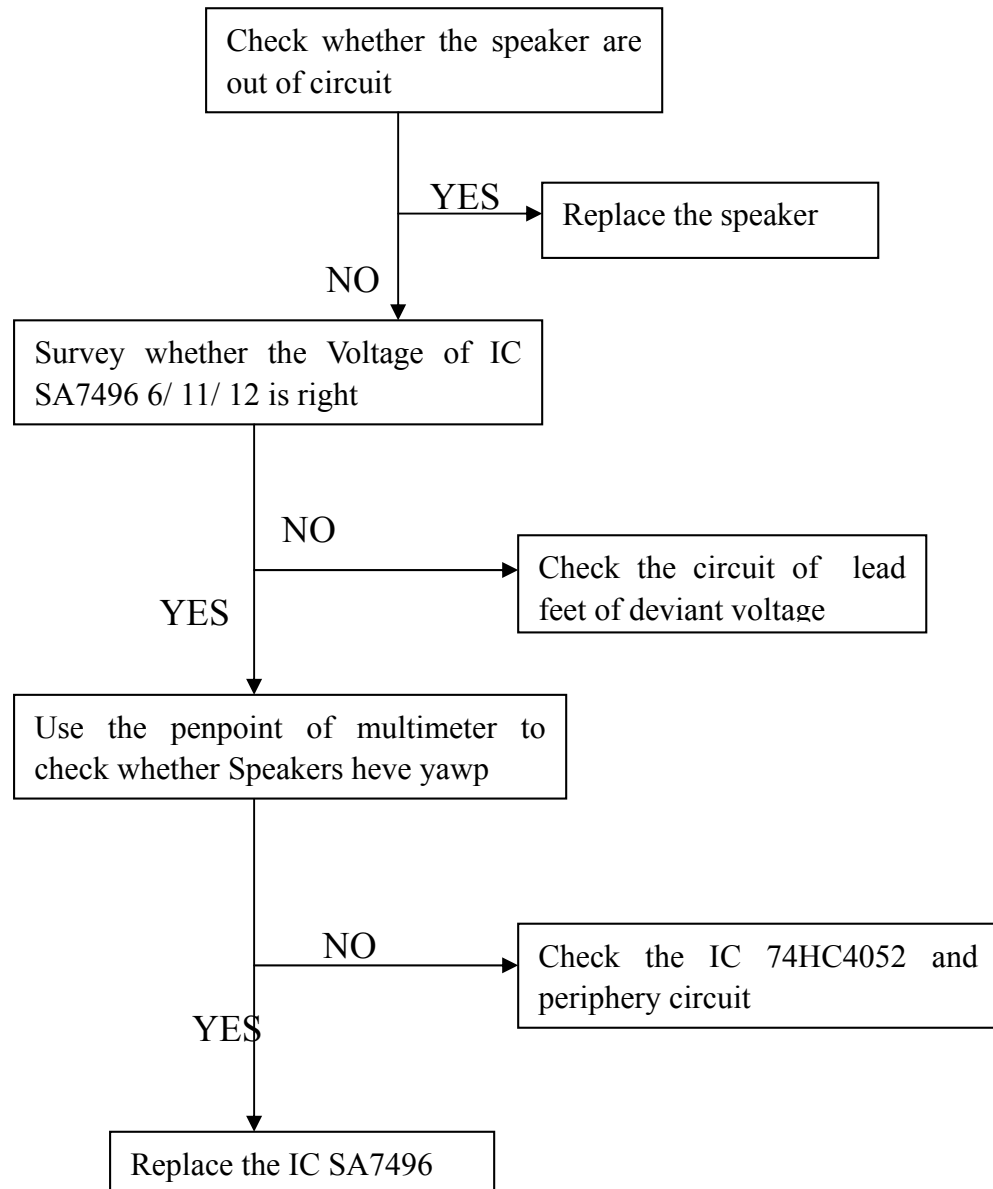
2. badness of color, maintain steps:



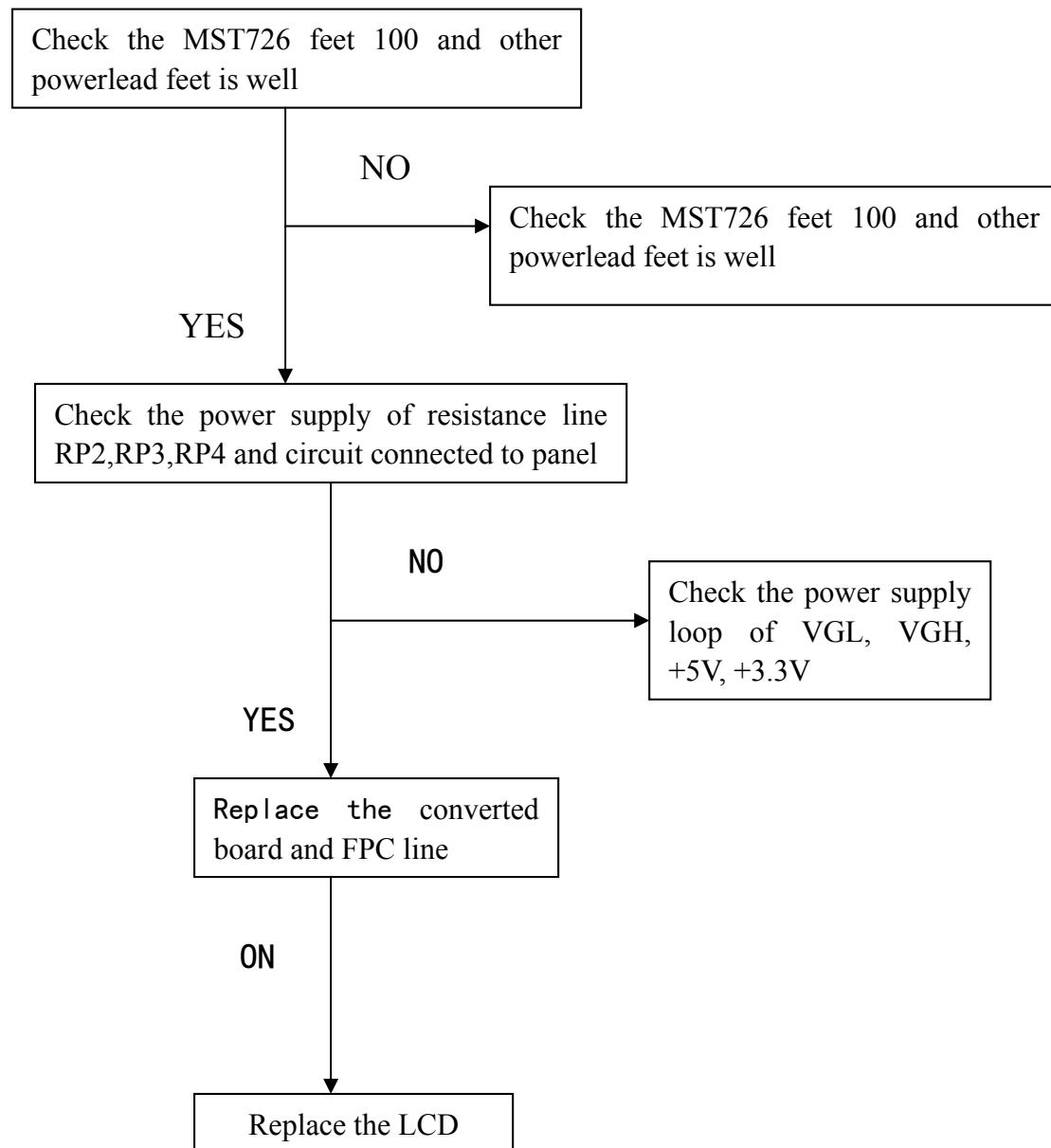
3、symptom: no signal, maintain steps:



4、System: have image, but no sound or undertone and distortion, maintain steps



5、white light, maintain steps:



Procedure for entry the Factory menu (Mstar)

Model :

CTV-7010, CTV-8010,

1. Turn on the unit
2. Press **MUTE→CALL→SLEEP→PICT** by remote control
3. Then the unit entry to the Factory Menu automatically.
4. Press “**MUTE**” to change pages
5. Press “**CH+**” or “**CH-**” to select the item
6. Press “**VOL+**” or “**VOL-**” to adjust the function.

Page 1.

Name	Description
VCOMDC	Adjust the VCOMDC voltage
VCOMAC	Adjust the VCOMAC voltage
VPOSITION	Adjust the picture about vertical position
HPOSITION	Adjust the picture about horizontal position
OSD VERTICAL	Adjust the OSD about the vertical position
OSD HORIZONTAL	Adjust the OSD about the horizontal position
SUB CONT	Adjust Contrast
SUB BRI	Adjust brightness
SUB COLOR	Adjust color
BACKWARD	ON / OFF

Page 2

Name	Description
ENGLISH OSD	ON / OFF
GERMAN OSD	ON / OFF
FRENCH OSD	ON / OFF
SPANISH OSD	ON / OFF
PORTUGUE OSD	ON / OFF
ITALIAN OSD	ON / OFF
DUTCH OSD	ON / OFF
RUSSIAN OSD	ON / OFF
CHINESE	ON / OFF
BACKWARD OSD	ON / OFF

Page 3

Name	Description
POWER OPTINO	ON / OFF / REM (remember the last position)
AV AUTO OFF	ON / OFF (The unit will be off when AV have not signal)
SCREEN BLUE	ON / OFF (Blue background)
BLUE OPTION	ON / OFF (Blue OSD)
HORIZONTAL	ON / OFF
VERTICAL	ON / OFF
4:3 OPT	ON / OFF
16:9 OPT1	ON / OFF
16:9 OPT2	ON / OFF
CAME BLUE	ON / OFF (Blue game background)
AV MUTE	ON / OFF (The unit be in Mute mode if AV have not signal)

Page 4

Name	Description
SUB VOLUME	Adjust the sub volume
NTSC	ON / OFF
SECAM	ON / OFF
PAL	ON / OFF
PAL-M	ON / OFF
PAL-N	ON / OFF
SOUND-BG	ON / OFF
SOUND-I	ON / OFF
SOUND-DK	ON / OFF
SOUND-M	ON / OFF
SOUND-L	ON / OFF