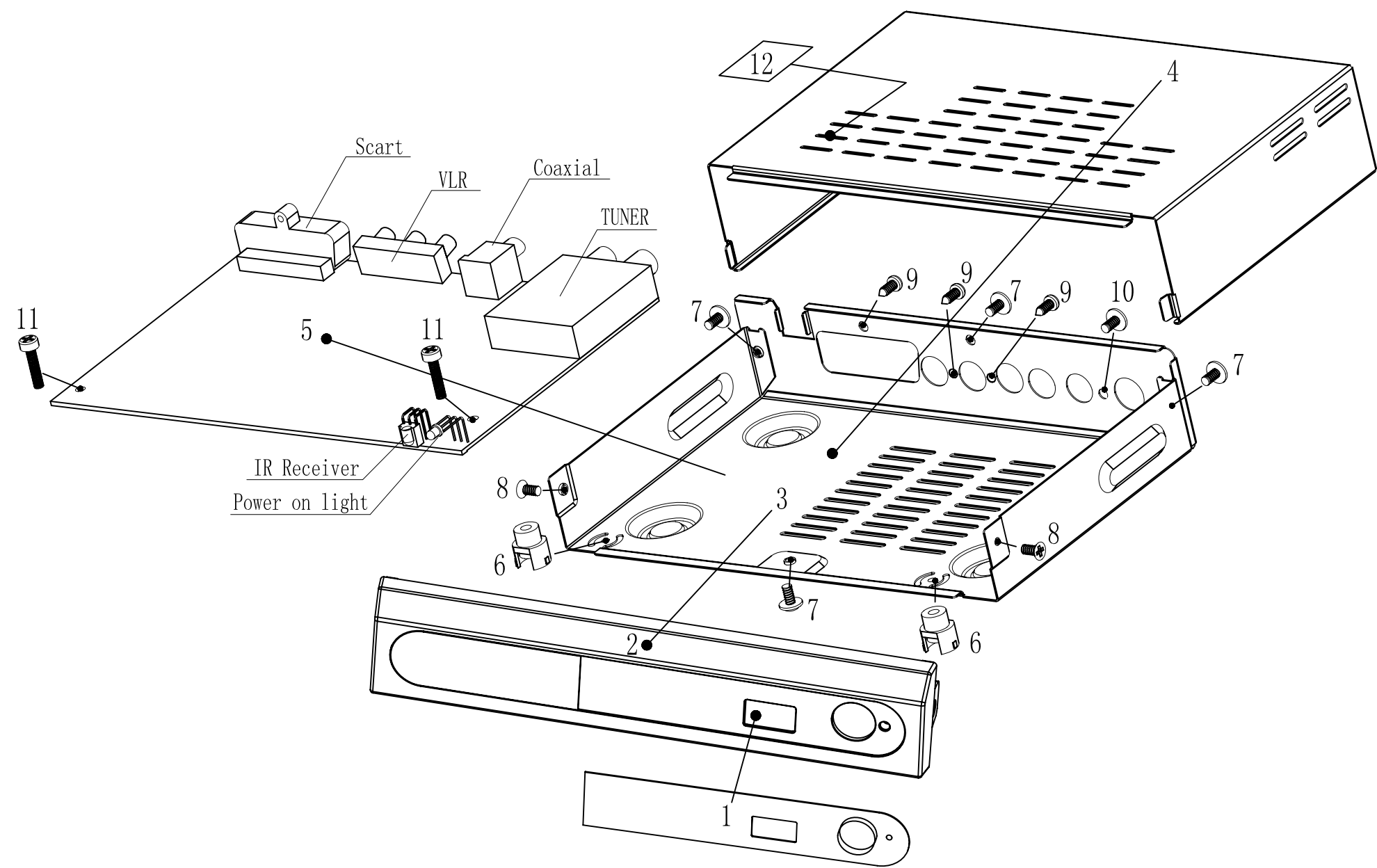
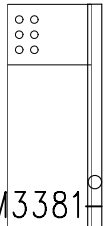
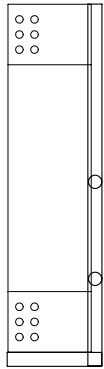
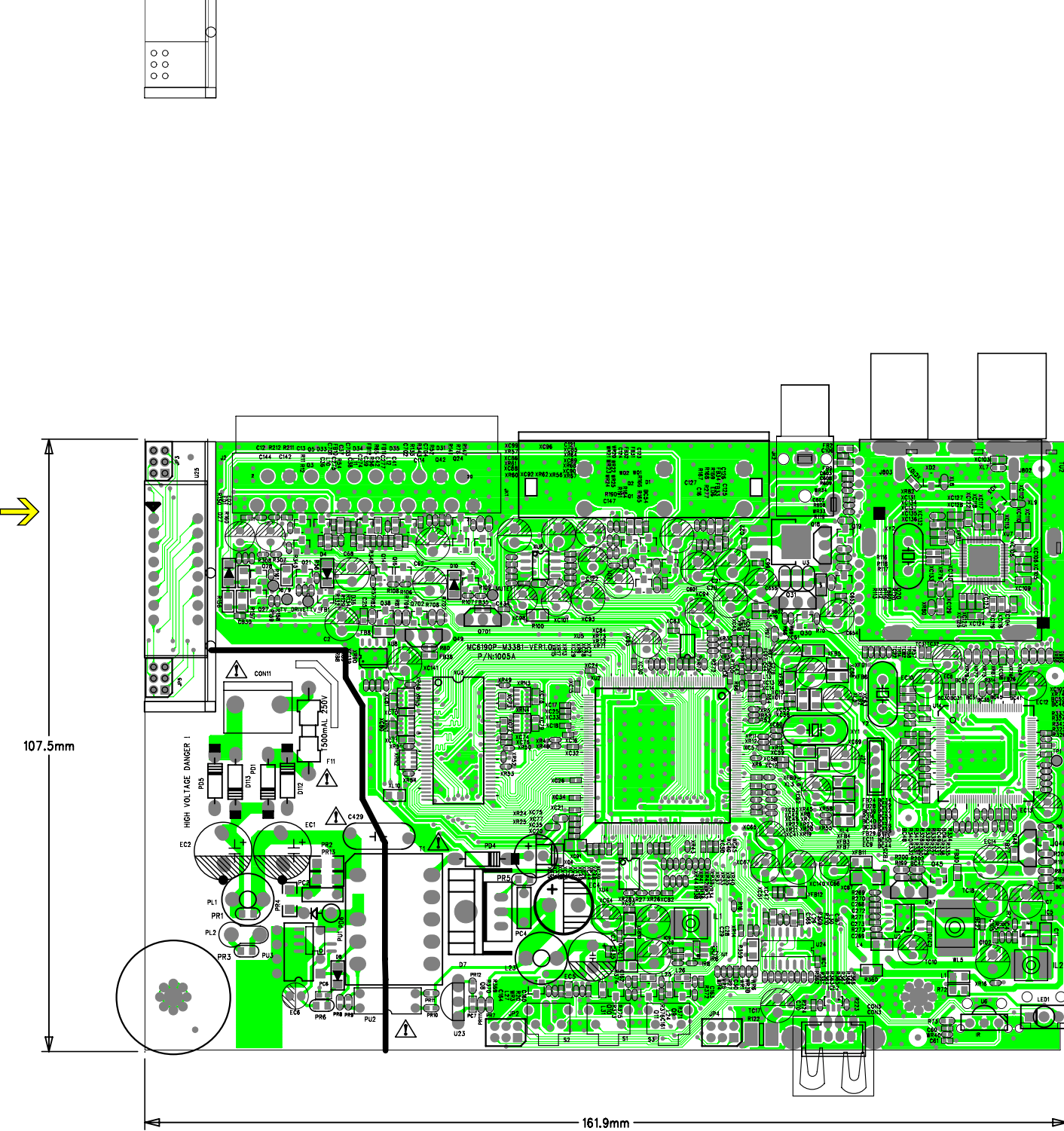


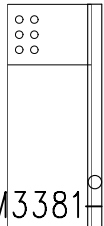
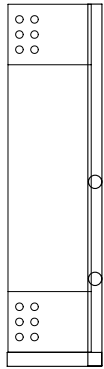
STB531 Explode View

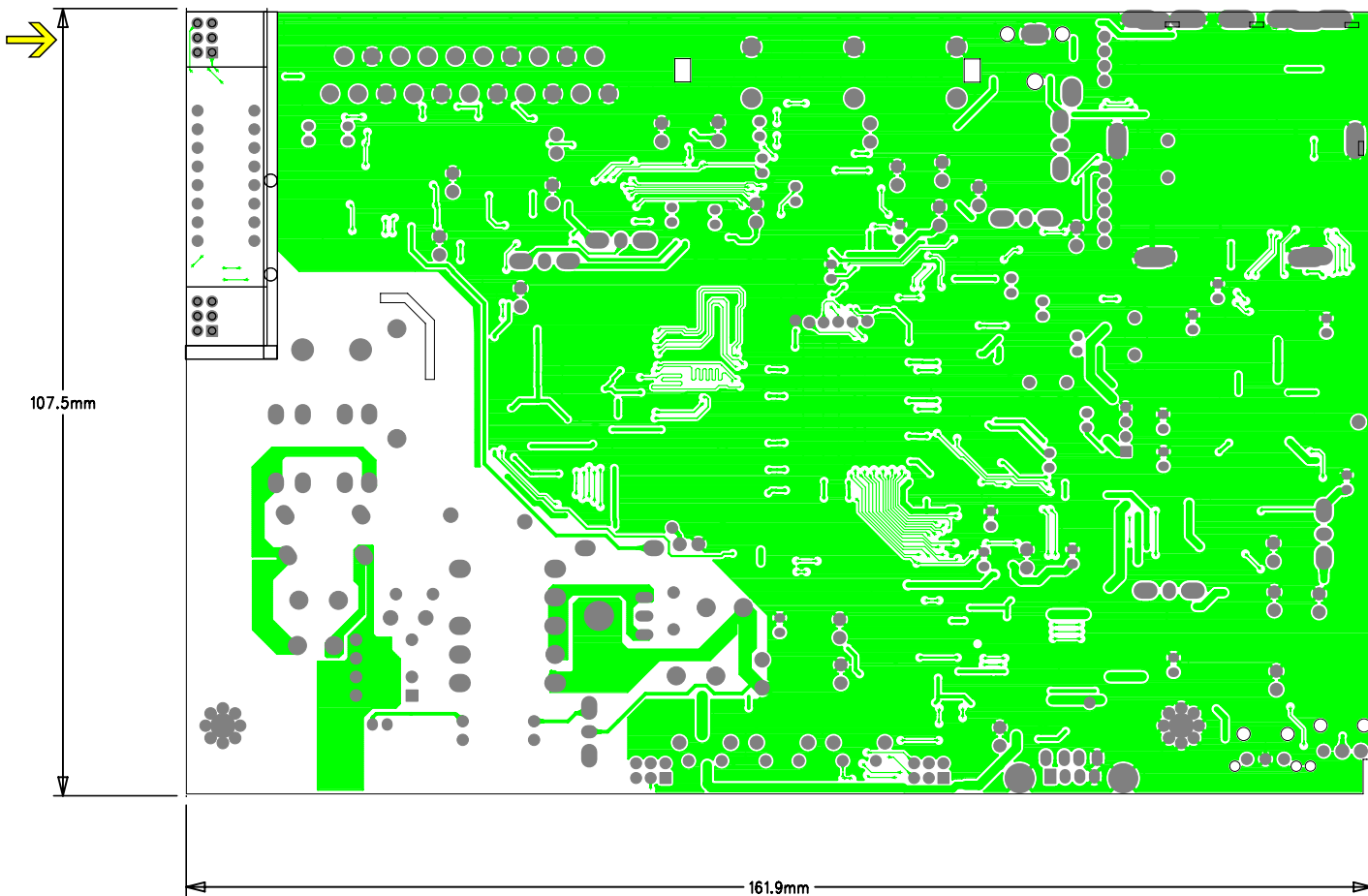
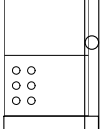


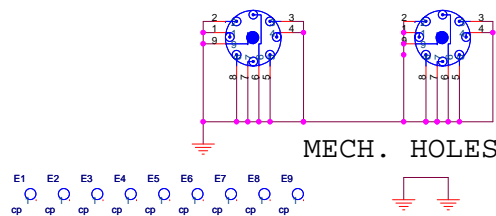
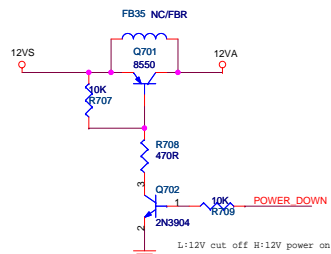
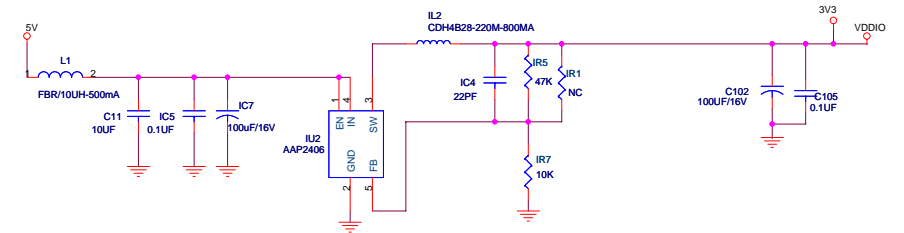
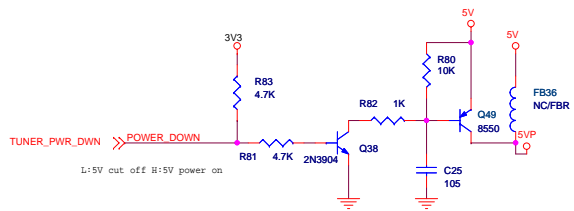
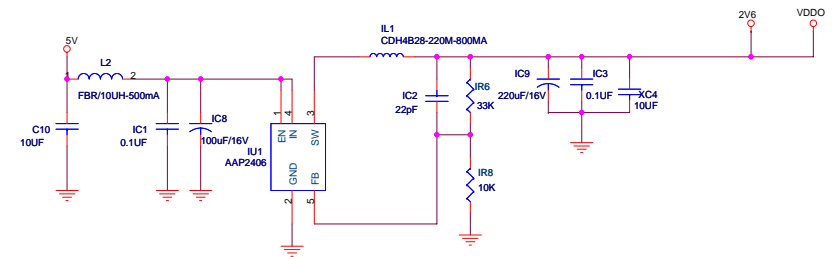
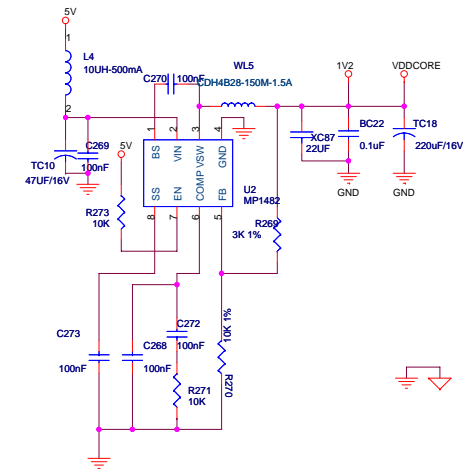
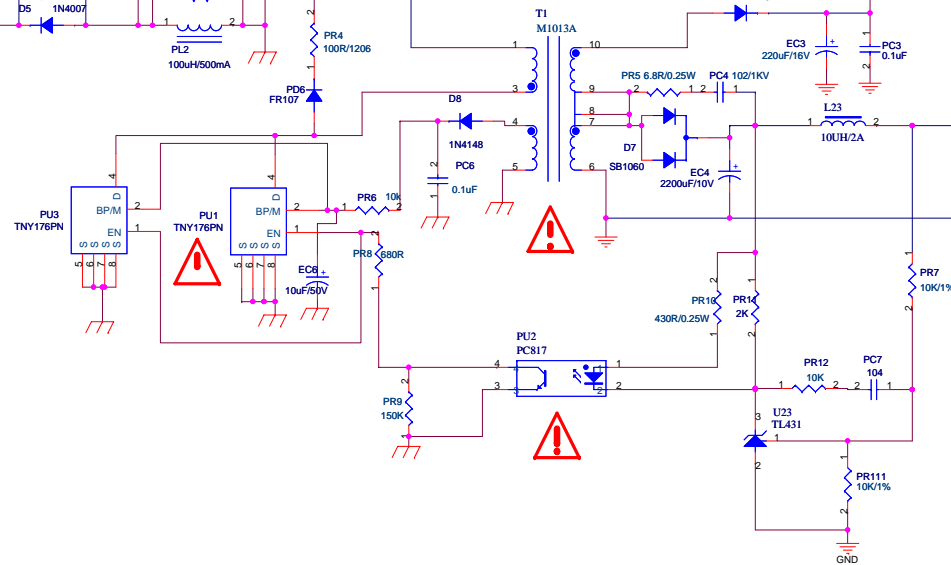
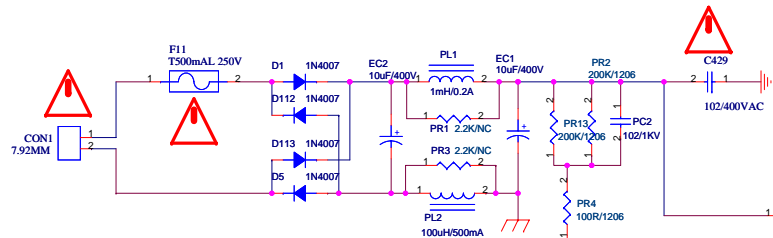
12	PVC (20*20*0.5)	1
11	BB3*14	2
10	PA2*5	1
9	PA3*8	3
8	FB2. 8*5	2
7	PWB3*6*6.5 (black)	4
6	HYJ94 H=9.4mm Rubber Column	2
5	MPEG Board	1
4	TOP Cover	1
3	BOTTOM COVER and REAL PANEL	1
2	FRONT PANEL	1
1	LENS	1
No.	Name	Qty
DATE:		2010. 07. 19
APPD BY:		
CHK BY:		
DRN BY:		LUO





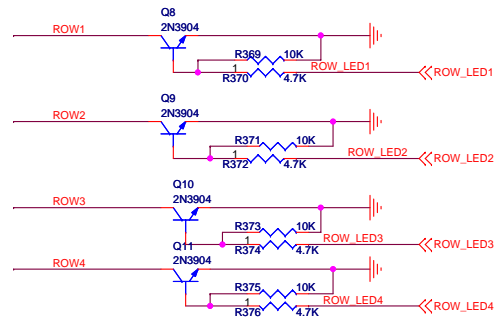
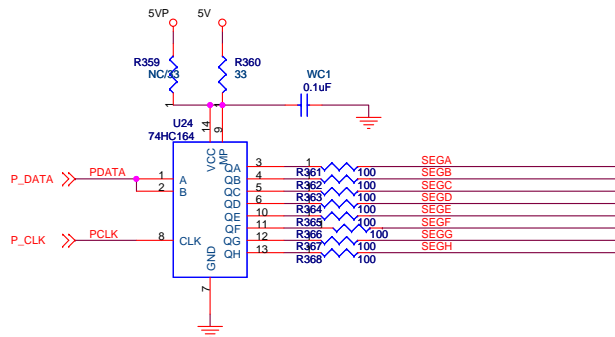
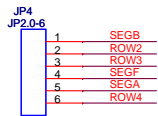
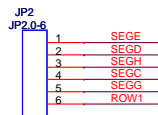




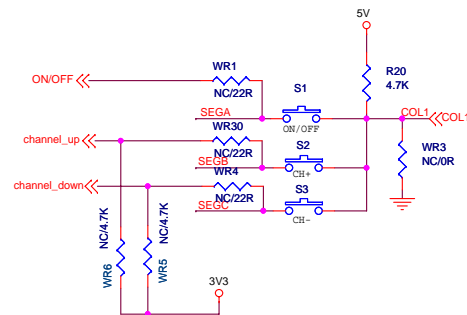
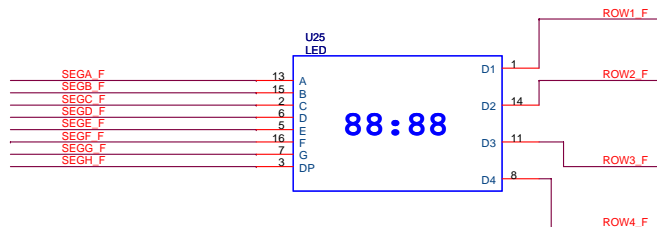
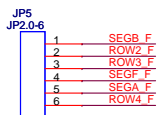
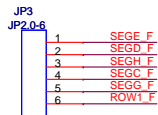


**MiCO**

Mico Technology (Shenzhen) Limited			
File	SMPS MODULE		
Size	Document Number	Rev	
Custom	M3381-STB	1.0	
Date:	Wednesday, May 05, 2010	Sheet	1 of 8
Design:	Check:	Approval:	

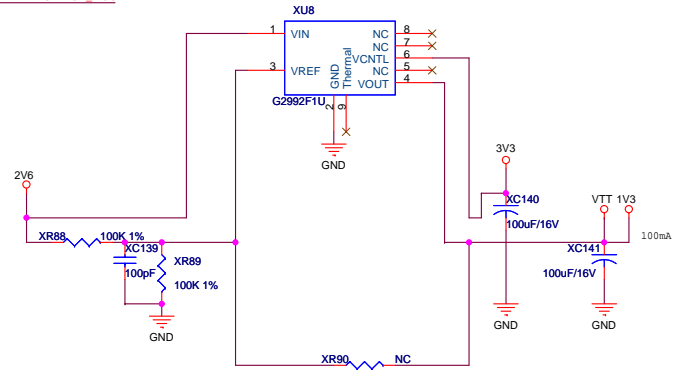
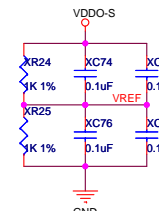


备注:此部分为前控板的LED显示电路,PCB LAYOUT 时须放在划出小区域板上



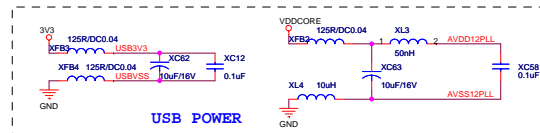
# MICO

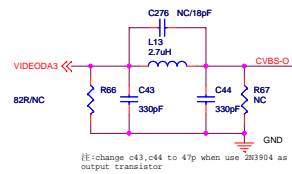
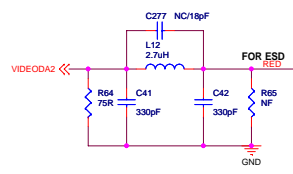
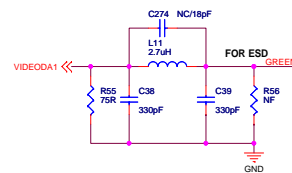
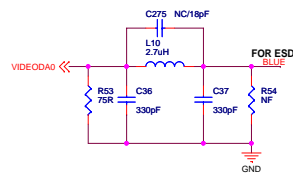
Mico Technology (Shenzhen) Limited			
Title FRONT PANEL			
Size	Document Number	Rev	
Custom	M3381-STB	1.0	
Date:	Monday, October 12, 2009	Sheet	2 of 8
Design:	Check:	Approval:	



Mico Technology (Shenzhen) Limited			
Title MEMORY			
Size Custom	Document Number M3381-STB		Rev 1.0
Date: Monday, October 12, 2009		Sheet 2 of 8	
Design:		Check:	Approval:

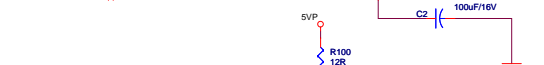




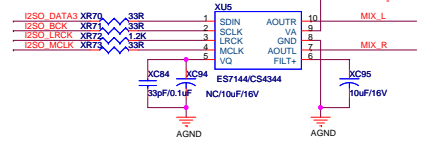


※: change c43,c44 to 47p when use 2N3904 as output transistor

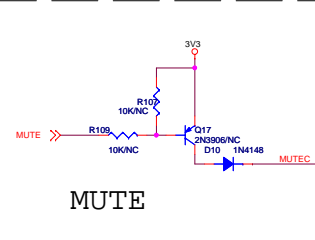
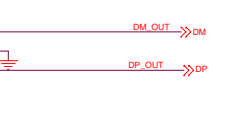
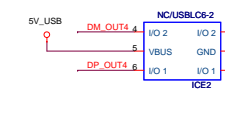
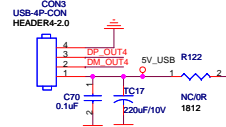
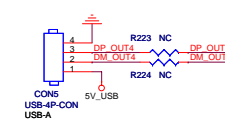
I2SD\_MCLK  
I2SD\_BCK  
I2SD\_LRCK  
I2SD\_DATA3



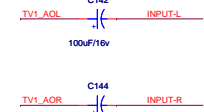
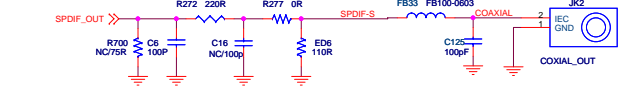
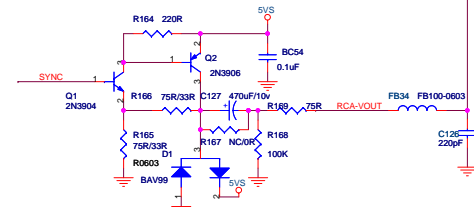
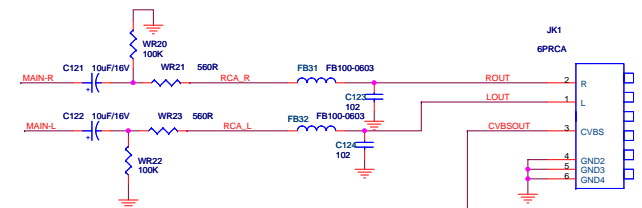
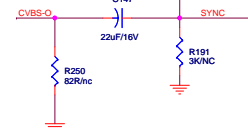
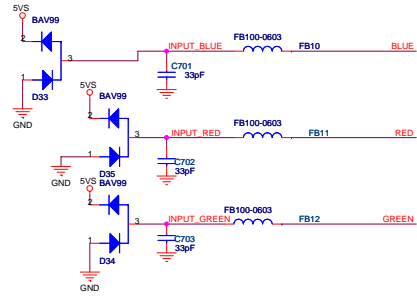
### AUDIO DAC



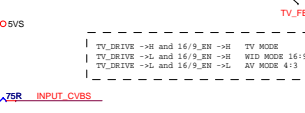
MAIN-R  
SYNC  
MUTE  
CVBS-O  
CVBS-O



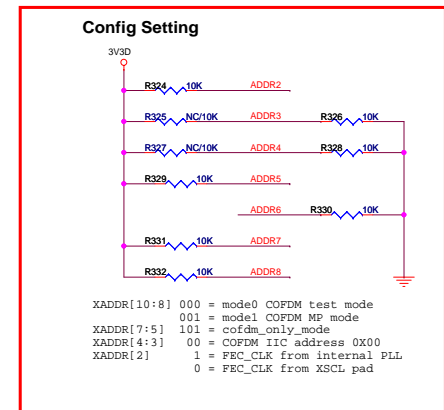
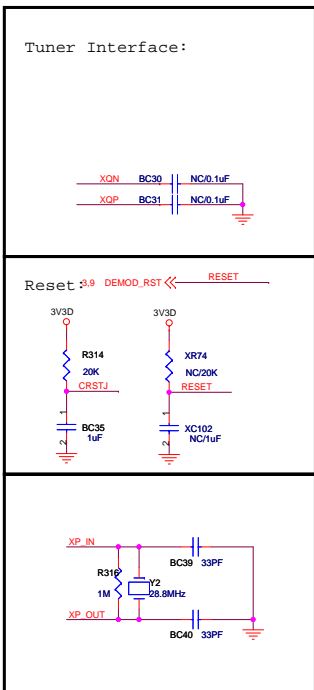
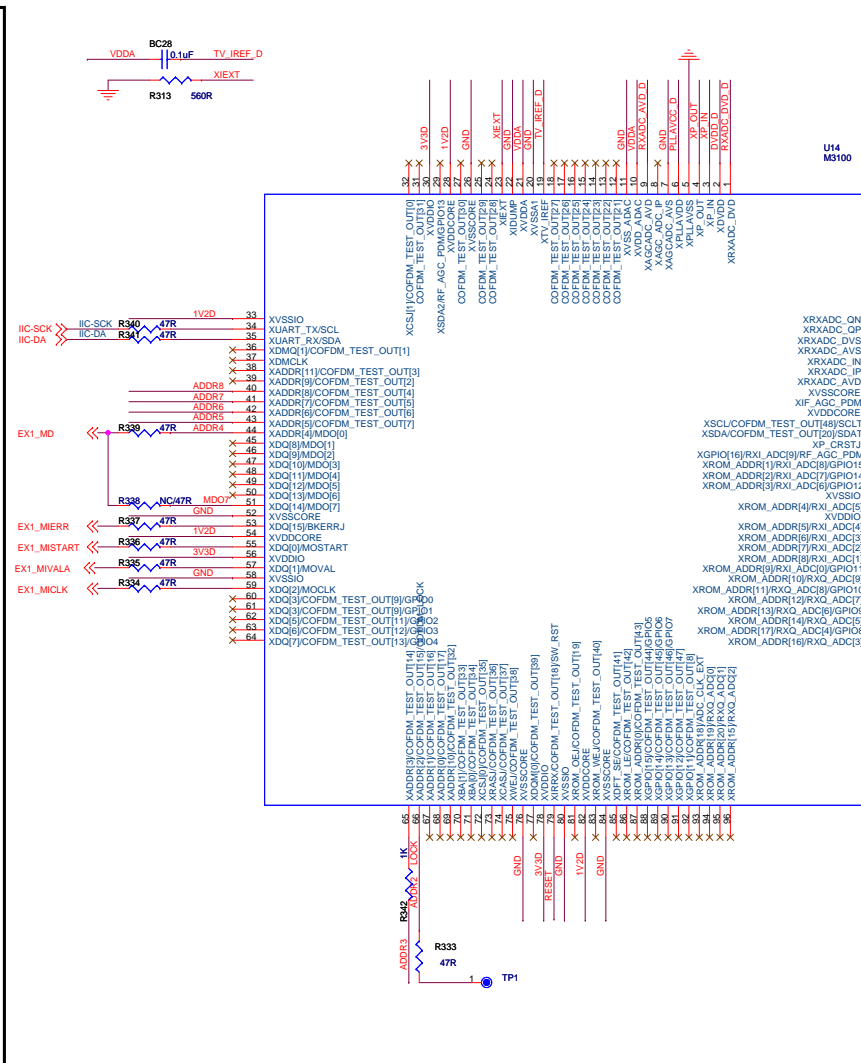
### MUTE



HIGH --- CVBS  
LOW --- RGB



Mico Technology (Shenzhen) Limited				
File	VIDEO&AUDIO			Rev
Size	Document Number			1.0
Customer	M331-076			
Date	Thursday, May 06, 2010			Sheet 4 of 8
Design:	Check:			Approval:







一、**深圳市新百信科技有限公司**

# TROUBLESHOOTING

In some region, the digital terrestrial signal may be weak. So you'd better use the antenna in which the booster was built, for watching the weak signal channels.

Problem	Possible cause	What to do
Standby light not lit	Mains lead unplugged Mains fuse blown	Check mains lead Check fuse
No signal found	Aerial is disconnected Aerial is damaged/misaligned Out of digital signal area	Check aerial lead Check aerial Check with dealer
No picture or sound	Scart/AV is not selected on your TV	Reduce to another channel
Scrambled channel message	Channel is scrambled	Select alternative channel
No response to remote control	Receiver off Handset not aimed correctly Front panel obstructed Hand set batteries exhausted	Plug in and turn on plug Aim handset at front panel Check for obstructions Replace handset batteries
Forgotten channel lock code		Re-install channels to cancel channel lock
Forgotten menu lock code		Contact help line
The remote control will not operate your STB	(1) The batteries in your remote control need replacing (2) There is an obstruction blocking the signal path between the remote control and the box.	(1) Replace the batteries (2) Check that there is nothing in the way of the path between the remote control and the receiver
After moving the STB to another room you find you are no longer able to receive digital reception	The aerial feed from the new point may come through a distribution system which may reduce the digital signal now received by the box.	Try a direct feed from the antenna

## **Upgrade instructions for SD DVB-T MPEG-4 STB (Ali 3381 solution)**

1. Copy the new software into the flash driver or mobile HDD by root path (do not establish a new file)
2. Turn on the sample and connect to the flash driver via USB and connect TV.
3. Enter "main menu/Tools/Upgrade by USB", press OK
4. Then you will find the name of the new software in "upgrade file"
5. Go to "start" and press "OK", a small window show " Are you sure to burn flash", press "Yes"
6. The sample will restart automatically (do not cut off the power during this period), then the new software has been upgrade