

TOYOTA

AUDIO COMPONENT SERVICE MANUAL



R-D-S WMA MP3



<CQ-TS6670LC>

CQ-TS6670LC CQ-TS6671LC

AM/FM/RDS MPX ELECTRONIC
TUNING Radio with CD Player

TOYOTA PART No. : 86120-05110(CQ-TS6670LC)
86120-05120(CQ-TS6671LC)

ID CODE : W58830 (CQ-TS6670LC)
W58831 (CQ-TS6671LC)

VEHICLE : AVENSIS

DESTINATION : Europe

PRODUCED AFTER : Mar., 2006

NOTE: CQ-TS6670LC is black while CQ-TS6671LC is silver.

Specifications*

General

Power Supply	DC 12V (10.5V - 16V), Test Voltage 13.2V Negative Ground
Current Consumption	3A or less (0.5W output)
Power Output	17.5W×4
Dark Current	0.3mA or less

AM Radio

Frequency Range	LW: 153 - 279kHz MW: 522 - 1,611kHz
Usable Sensitivity	LW: 40dB(μV) or less MW: 34dB(μV) or less
Signal to Noise Ratio	LW: 22dB or more MW: 21dB or more (35dB(μV)) MW: 42dB or more (74dB(μV))

FM Stereo Radio

Frequency Range	87.5 - 108MHz
Usable Sensitivity	14dB(μV) or less (S/N 30dB)
Signal to Noise Ratio	35dB or more (18dB(μV)) 46dB or more (54dB(μV))

RDS Radio

RDS Sensitivity	22dB(μV)
-----------------	----------

CD Player (YGFD15314)

Channel Separation	60dB or more (1kHz BPF)
Signal to Noise Ratio	65dB or more (IHF-A)

Dimensions**	178×100×151.4mm (W×H×D)
Weight**	2060g

* Specifications and the design are subject to possible modification without notice due to improvements.

** Dimensions and Weight shown are approximate.

PUB. No.80738

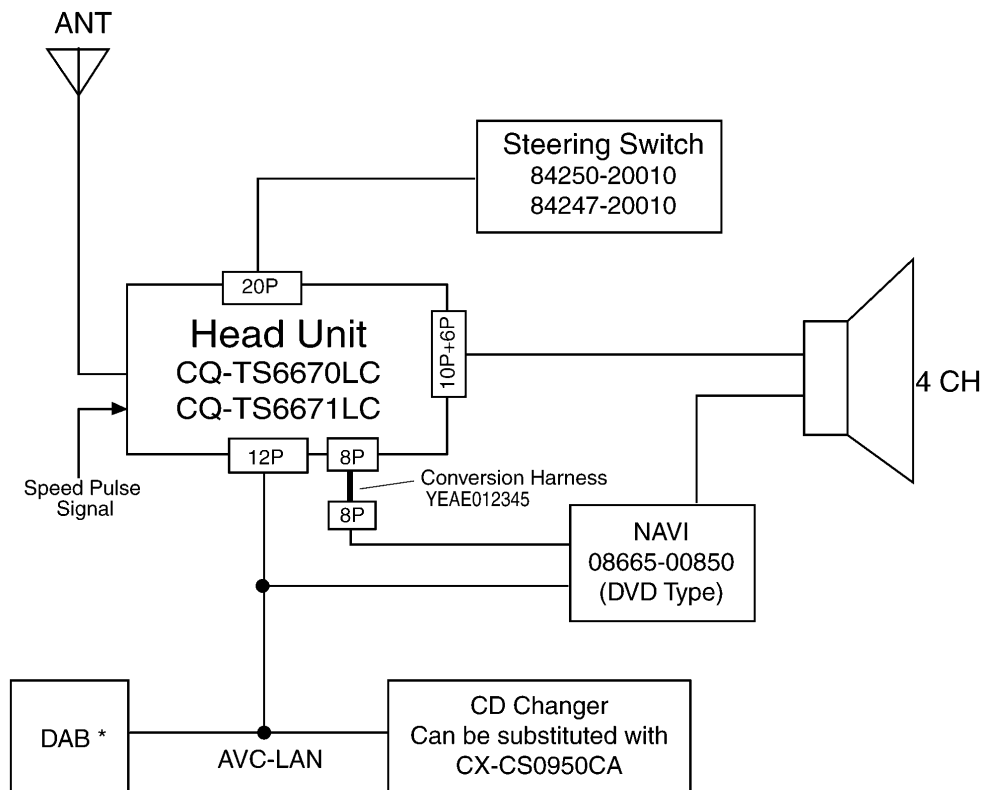
CONTENTS

	Page		Page
1 FEATURES	2	7 PACKAGE AND IC BLOCK DIAGRAM	8
2 SYSTEM BLOCK DIAGRAM (For Testing)	2	8 REPLACEMENT PARTS LIST	11
3 VIEWS AND FUNCTIONS	3	9 EXPLODED VIEW (Unit)	16
4 WIRING CONNECTION	4	10 WIRING DIAGRAM	17
5 BLOCK DIAGRAM	5	11 SCHEMATIC DIAGRAM	21
6 TERMINALS DESCRIPTION	6	12 MEMO	23

1 FEATURES

- PLL (Phase Locked Loop) synthesized tuning.
- 24-station preset (6-AM, 18-FM).
- RDS radio.
- CD-R/CD-RW correspondence.
- NCD-930 (MP3/WMA play)
- IDC-2.5 (MP3/WMA play)

2 SYSTEM BLOCK DIAGRAM (For Testing)

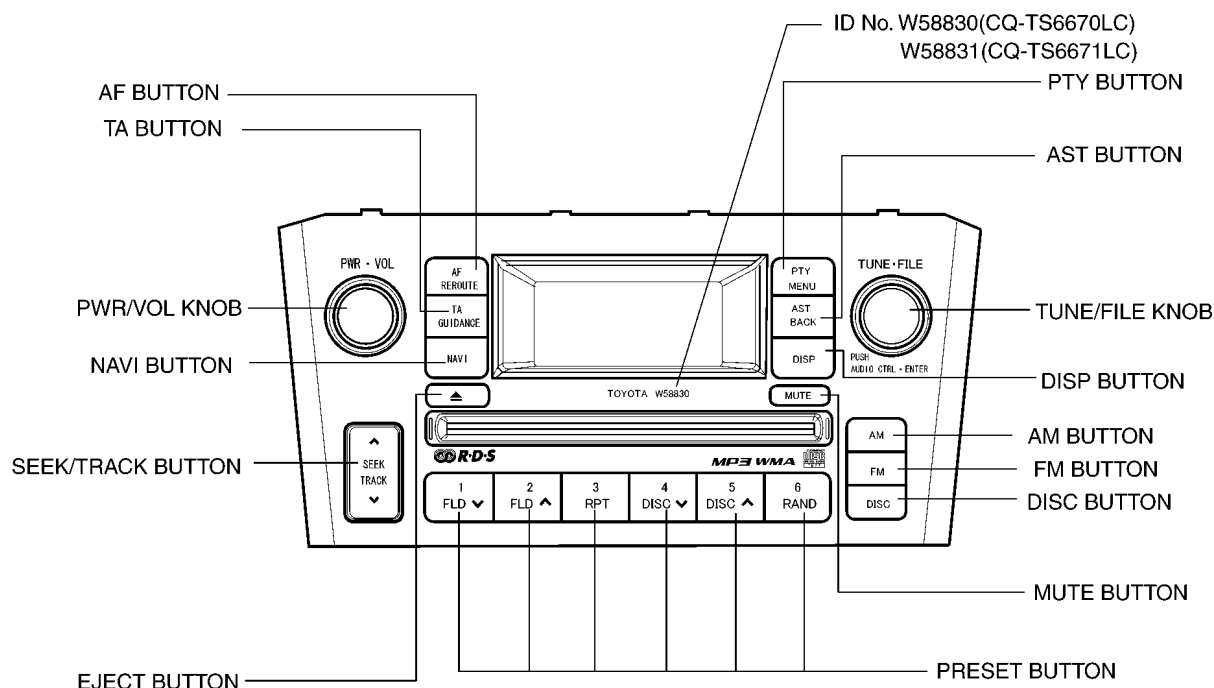


* The communication inspection for DAB AVC-LAN allows a substitution of CDCH AVC-LAN.

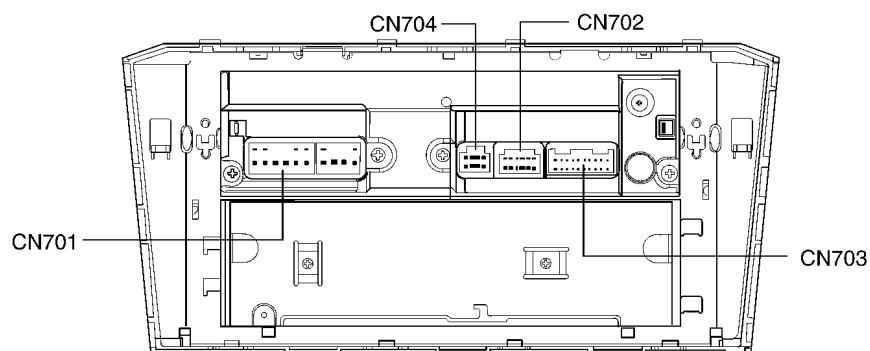
*When this system is tested, this system diagram could be different from the actual vehicle.

3 VIEWS AND FUNCTIONS

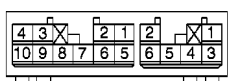
■ Front View



■ Rear View

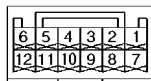


CN701 10P+6P Connector



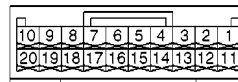
- | | |
|----------------------|--------------------|
| 1. FR ⁺ | 1. RR ⁺ |
| 2. FL ⁺ | 2. RL ⁺ |
| 3. ACC | 3. RR ⁻ |
| 4. ⁺ B | 4. TLMT |
| 5. FR ⁻ | 5. OPEN(PIN) |
| 6. FL ⁻ | 6. RL ⁻ |
| 7. GND | |
| 8. ANT | |
| 9. AMP | |
| 10. ILL ⁺ | |

CN702 12P Connector



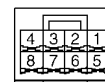
- | | |
|---------------------|----------------------|
| 1. CSLD | 7. GND |
| 2. CDR ⁺ | 8. OPEN(PIN) |
| 3. CDR ⁻ | 9. TXM ⁺ |
| 4. CDL ⁺ | 10. TXM ⁻ |
| 5. CDL ⁻ | 11. ACC |
| 6. MUTE | 12. ⁺ B |

CN703 20P Connector



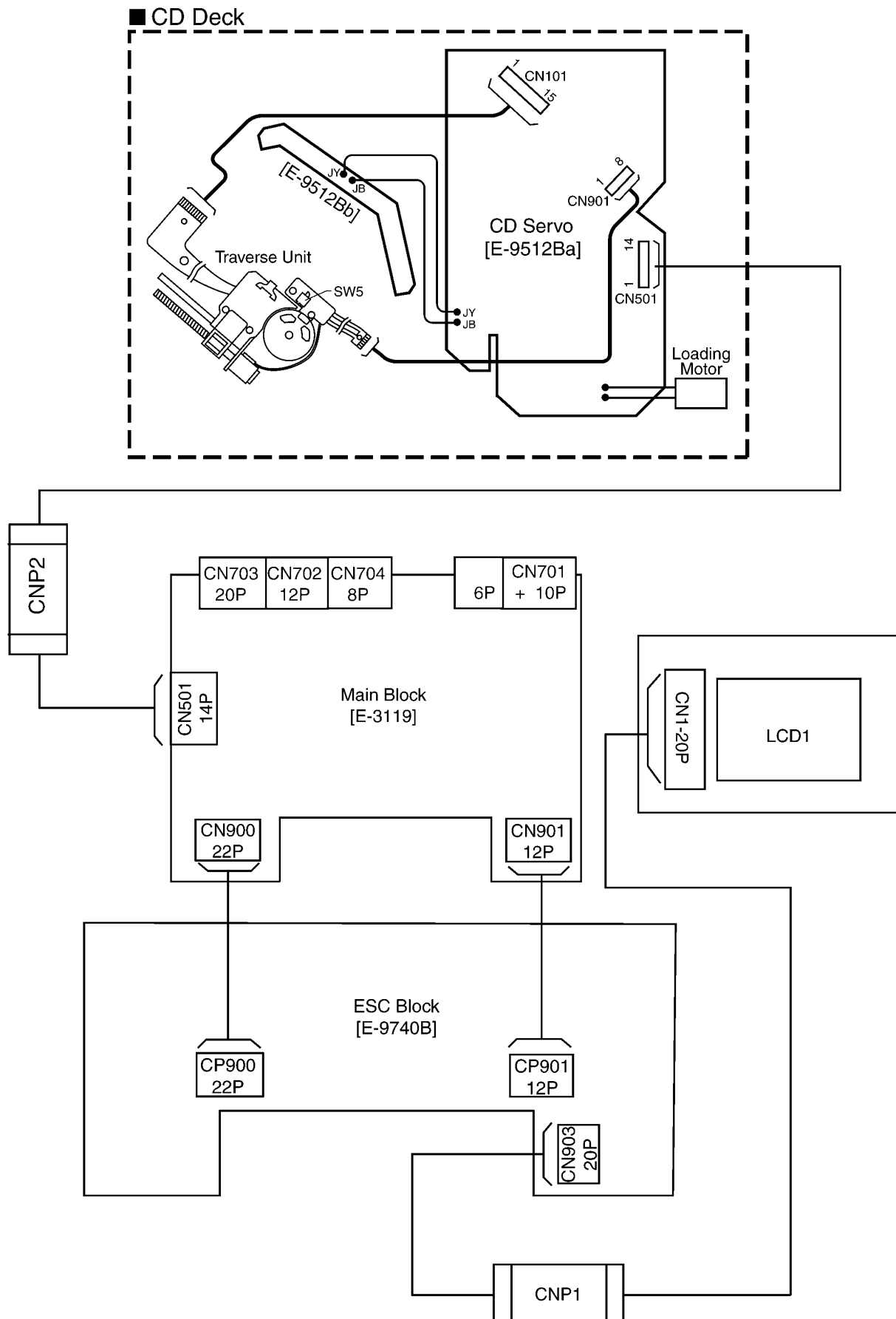
- | | |
|----------------------|---------------|
| 1. OPEN(PIN) | 11. OPEN(PIN) |
| 2. OPEN(PIN) | 12. OPEN(PIN) |
| 3. SPD | 13. OPEN(PIN) |
| 4. OPEN(PIN) | 14. OPEN(PIN) |
| 5. OPEN(PIN) | 15. OPEN(PIN) |
| 6. SWG | 16. GND |
| 7. SW1 | 17. OPEN(PIN) |
| 8. SW2 | 18. OPEN(PIN) |
| 9. TX1 ⁺ | 19. OPEN(PIN) |
| 10. TX1 ⁻ | 20. OPEN(PIN) |

CN704 8P Connector



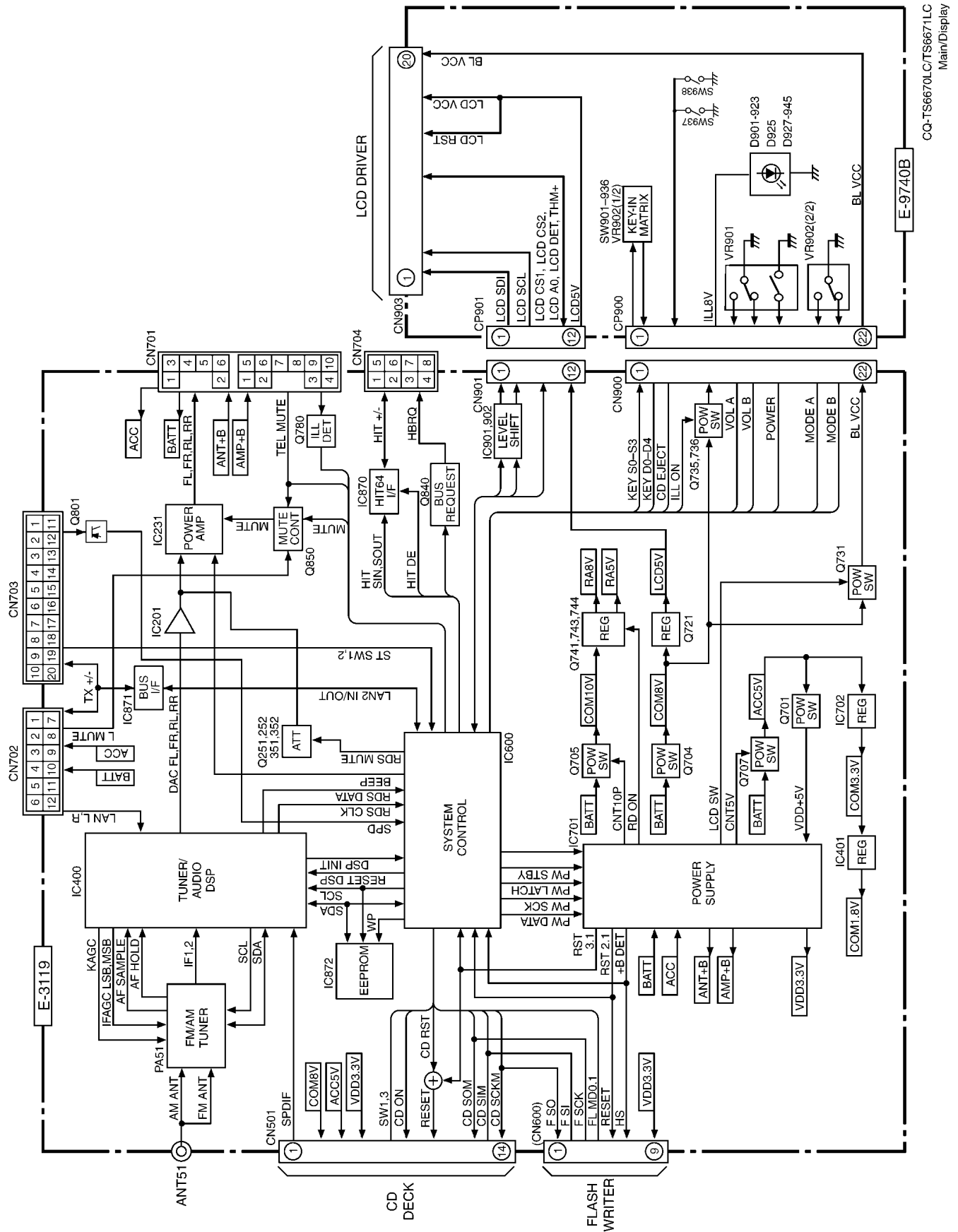
- | |
|---------------------|
| 1. BRQ |
| 2. OPEN(PIN) |
| 3. OPEN(PIN) |
| 4. OPEN(PIN) |
| 5. SGND |
| 6. HIT ⁻ |
| 7. HIT ⁺ |
| 8. OPEN(PIN) |

4 WIRING CONNECTION



5 BLOCK DIAGRAM

5.1. Main / Display Block



6 TERMINALS DESCRIPTION

6.1. Main Block

IC600: C2DBLK000110

No.	Port	Descriptions	I/O	FM	AM	CD
1	AVDD	Standard voltage for A/D converter	-	3.4	3.4	3.4
2	GND	Ground Terminal	-	0	0	0
3	ILL-DET	H: Illumination off L: Illumination on	I	3.4	3.4	3.4
4	(PORT)	H: LAN-MUTE off (normal) L: LAN-MUTE on (DSP-MUTE)	I	0	0	0
5	VDD	-	-	3.4	3.4	3.4
6	MUTE ON/OFF	H: MUTE on L: MUTE off	O	0	0	0
7	NC	No Connection	-	-	-	-
8	IC/ FLMD0	-	-	0	0	0
9	VDDO	-	-	3.4	3.4	3.4
10	REGCPU	Regulator output stable capacity connection and power when regulator stops	-	2.5	2.5	2.6
11	GND	Ground	-	0	0	0
12	X1	Oscillation (main clock) 4.718MHz	I	1.2	1.2	1.2
13	X2	Oscillation (main clock) 4.718MHz	O	1.2	1.2	1.2
14	RESET	H: Normal L: Reset	I	3.3	3.4	3.4
15	XT1	Oscillation (sub) 32.768kHz	I	-	-	-
16	NC	No connection	-	-	-	-
17	NC	No connection	-	-	-	-
18	Lo-BAT. RESET	H: +B, 3.1V or more L: +B, less than 3.1V	I	3.3	3.3	3.4
19	SW1	H: SW1 on L: SW1 off	I	0	0	3.4
20	DRST	On-chip debug	I	0	0	0
21	PWR	H: PWR off L: PWR on	I	3.3	3.3	3.3
22	CD-SOM	CD (IDC) deck serial communication	I	0	0	1.9
23	CD-SIM	CD (IDC) deck serial communication H: data "1" L: data "0"	O	0	0	2.6
24	CD-SCKM	CD (IDC) deck serial communication clock	O	0	0	3.4
25	SIYOU1	Specification 1	-	-	-	-
26	LOAD	(LOAD)	I	1.7	1.7	1.7
27	SW3	H: SW3 on L: SW3 off	I	0	0	3.3
28	BEEP	Beep output terminal	O	0	0	0
29	SPD	Input from the vehicle pulse 1 pulse: 1/2548km	I	0	0	0
30	SIYOU2	Specification 2	-	-	-	-
31	TX +	AVC-LAN data input	O	0	0	0
32	TX -	AVC-LAN data output	I	0	0	0
33	GND	GND for I/O port and combined function	-	0	0	0
34	VDD	Postive power supply for I/O port and combined function	-	3.4	3.4	3.4
35	HIT-SOUT	HIT64 data output terminal	O	3.5	3.5	3.5
36	HIT SIN	HIT64 data input	I	4.6	4.7	4.6
37	NC	No connection	-	-	-	-
38	ILL-ON	H: Ill on L: Ill off	O	0	0	0
39	DDI	On-chip debug terminal	O	0	0	0
40	DDO	On-chip debug terminal	O	0	0	0
41	DK	On-chip debug terminal	O	0	0	0
42	DMS	On-chip debug terminal	O	0	0	0
43	DSP-SDA	DSP (SAF7730HV) (H/L)	I/O	2.7	2.7	2.7
44	DSP-SCL	DSP (SAF7730HV) clock signal output (H/L)	O	2.4	2.4	2.4
45	WP	H: E2PROM write protect (in) L: E2PROM is writing (out)	I/O	3.1	3.1	3.1

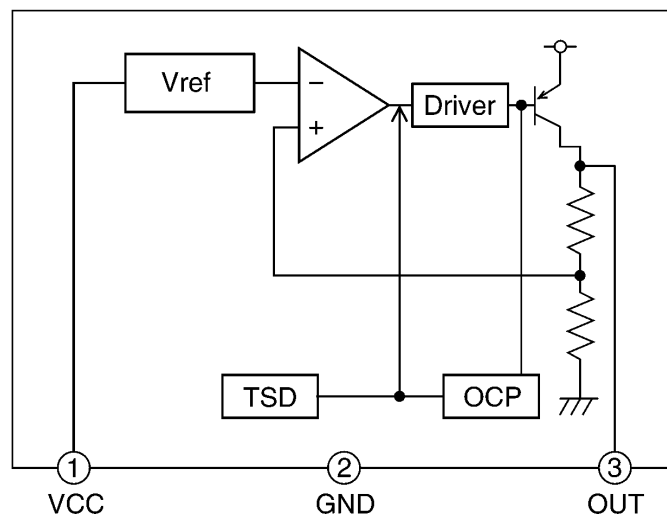
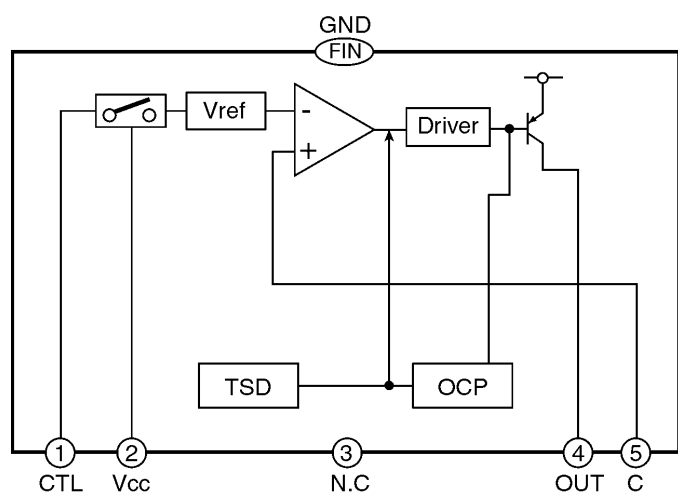
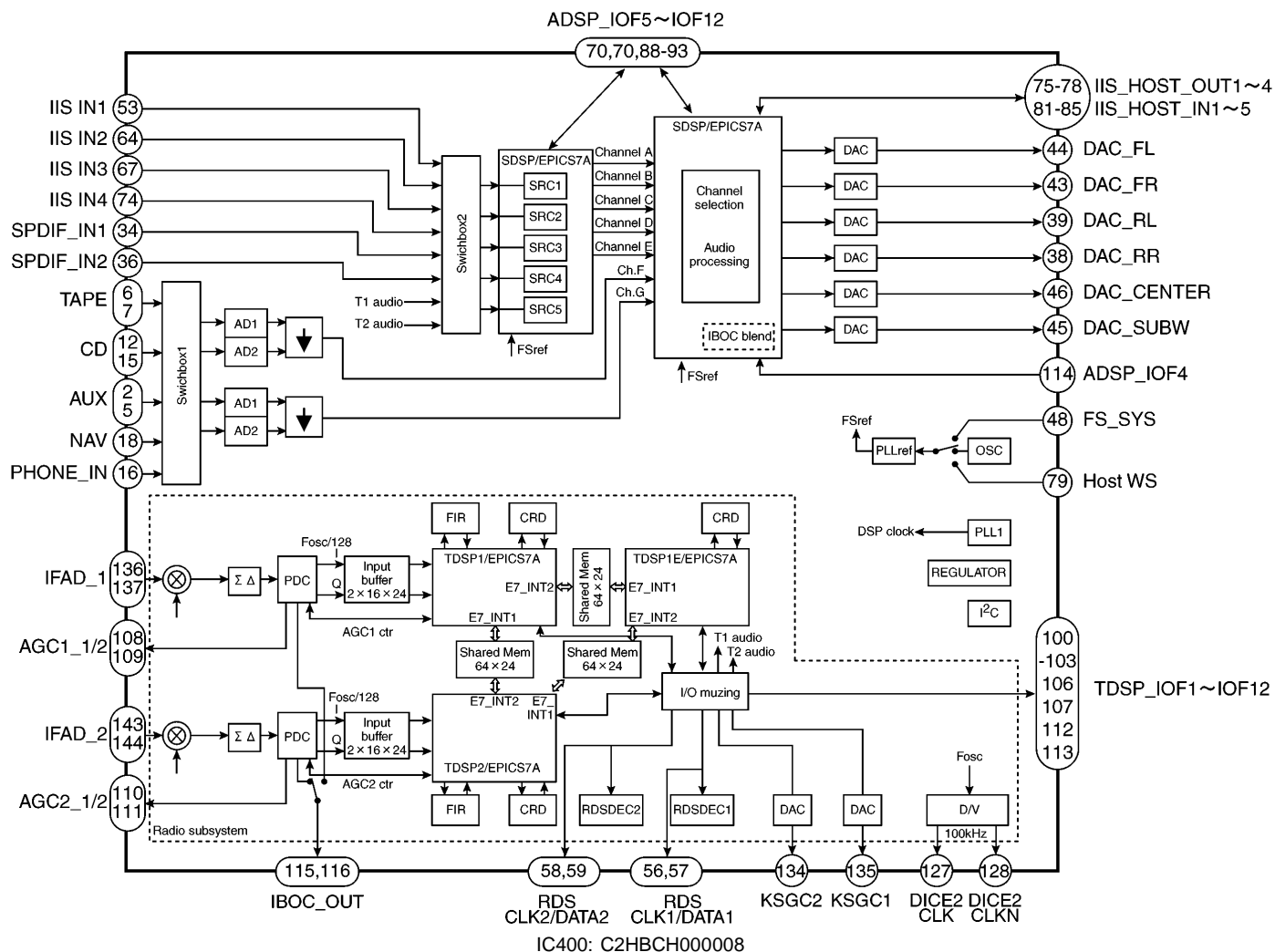
46	LCD-DET	H: Normal L: S1D15605 sudden drop	I	4.5	4.5	4.5
47	LCD-RESET	H: Normal L: LCD reset	O	4.5	4.5	4.5
48	LCD-CS2	S1D15605 chip select terminal 2	O	4.5	4.5	4.5
49	LCD-CS1	S1D15605 chip select terminal 1	O	4.5	4.5	4.5
50	LCD-A0	S1D15605 data; command switch output	O	4.5	4.5	4.5
51	LCD-DATA	S1D15605 data output/input	O	0	0	0
52	LCD-SCL	S1D15605 clock output	O	3.4	3.4	3.4
53	RDS-DATA	RDS demodulator data input	I	1.5	3.3	1.7
54	HIT-HBRQ	HIT64 BRQ terminal H: on L: off	O	3.4	3.4	3.4
55	RDS-CL	RDS demodulator clock input	I	1.6	3.3	1.6
56	HIT-DE	H: Sending data L: Not sending data	O	0	0	0
57	NC	No connection	-	-	-	-
58	ACC-DET	H: Acc on L: Acc off	I	3.4	3.4	3.4
59	RESET_DSP	H: DSP normal L: DSP reset	O	3.4	3.4	3.4
60	DSP_INIT	H: INIT complete L: INIT incomplete	I	3.3	3.3	3.3
61	+B-DET	H: +B on L: +B off	I	3.4	3.4	3.4
62	RDS-MUTE	H: RDSMUTE on L: RDSMUTE off	O	0	0	0
63	L/R	H: Left handle L: Right handle	I	3.1	3.1	3.1
64	NC	No connection	-	-	-	-
65	DIV-SW	H: Main is fixed L: Diver operation	I	0	0	0
66	TEL-MUTE	H: VOL operation is valid L: VOL operation is invalid	I	3.4	3.4	3.4
67	CD-RESET	H: Normal L: Reset	O	3.4	3.4	3.4
68	CD-ON	H: CD deck microcomputer communication is possible L: Not possible	O	0	0	3.4
69	GND (BVSS)	(BVSS) Ground for bus interface	-	0	0	0
70	VDD (BVDD)	Positive power supply for bus interface	-	3.4	3.4	3.4
71	NC	No connection	-	-	-	-
72	NC	No connection	-	-	-	-
73	BRIGHT-IND	-	O	-	-	-
74	NC	No connection	-	-	-	-
75	CD-EJ	H: CD-EJ off L: CD-EJ on	I	3.3	3.3	3.3
76	FLMD1	-	O	0	0	0
77	KEY-D0	Key matrix input terminal D0	I	0	0	0
78	KEY-D1	Key matrix input terminal D1	I	0	0	0
79	KEY-D2	Key matrix input terminal D2	I	0	0	0
80	KEY-D3	Key matrix input terminal D3	I	0	0	0
81	KEY-D4	Key matrix input terminal D4	I	0	0	0
82	KEY-S3	Key matrix output terminal S3	O	0	0	0
83	KEY-S2	Key matrix output terminal S2	O	0	0	0
84	PW-STBY2	STBY2 output for power IC (BD4902) No reversing	O	3.4	3.4	3.4
85	PW-STBY	STBY output for power IC (BD4902) No reversing	O	3.4	3.4	3.4
86	PW-LATCH	Latch signal output for power IC (BD4902) No reversing	O	3.4	3.4	3.4
87	PW-SCK	Clock output for power IC (BD4902) No reversing	O	0	0	0
88	PW-DATA	Data output for power IC (BD4902) No reversing	O	0	0	0
89	KEY-S1	Key matrix output terminal S1	O	0	0	0
90	KEY-S0	Key matrix output terminal S0	O	0	0	0
91	MODE-A	Mode encoder input terminal A	I	3.1	3.1	3.2
92	MODE-B	Mode encoder input terminal B	I	3.1	3.1	3.2

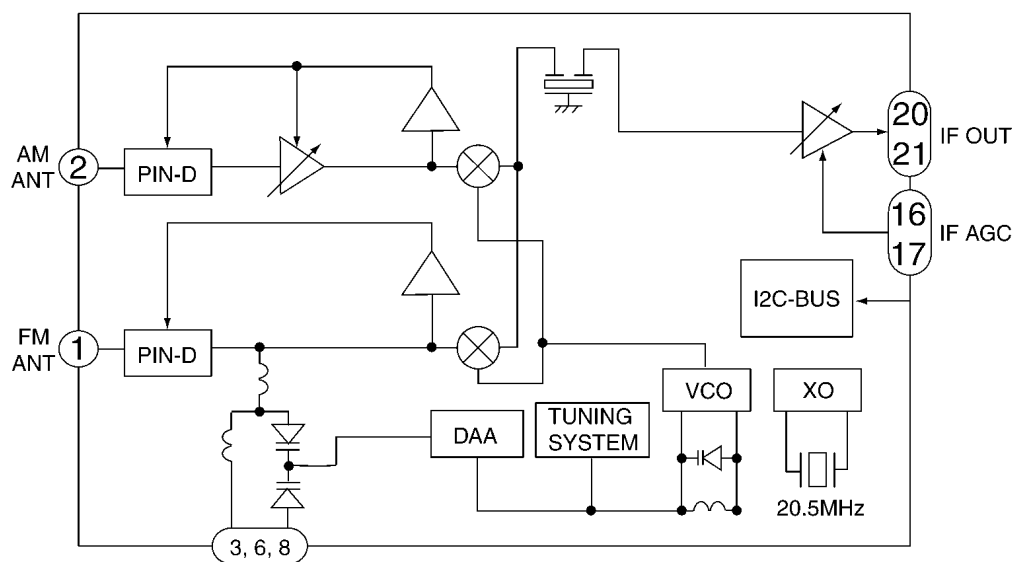
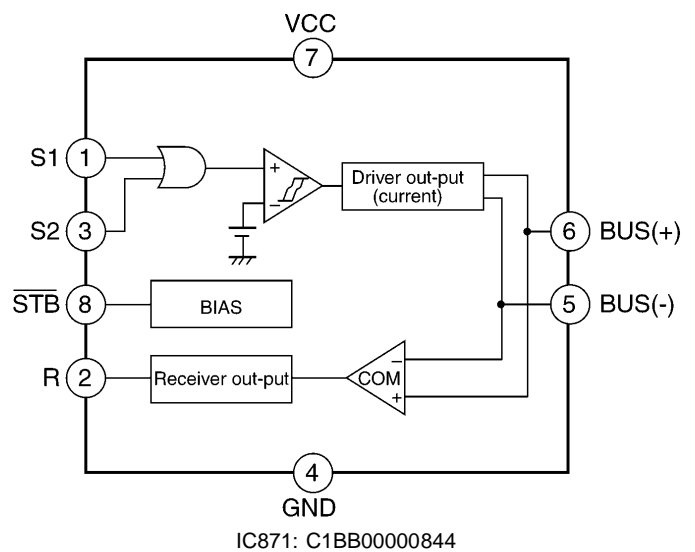
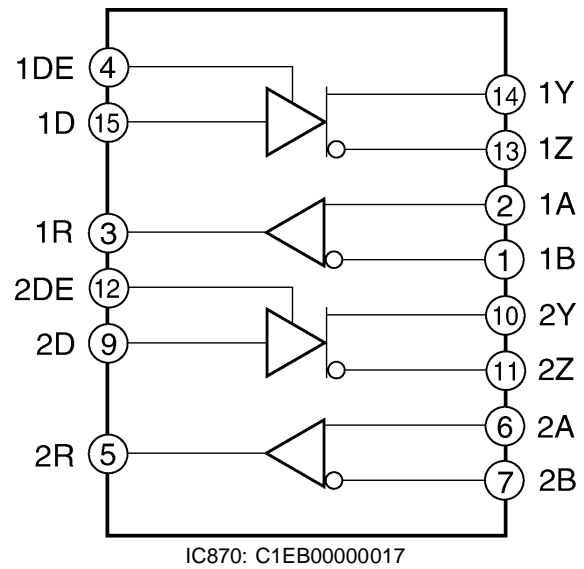
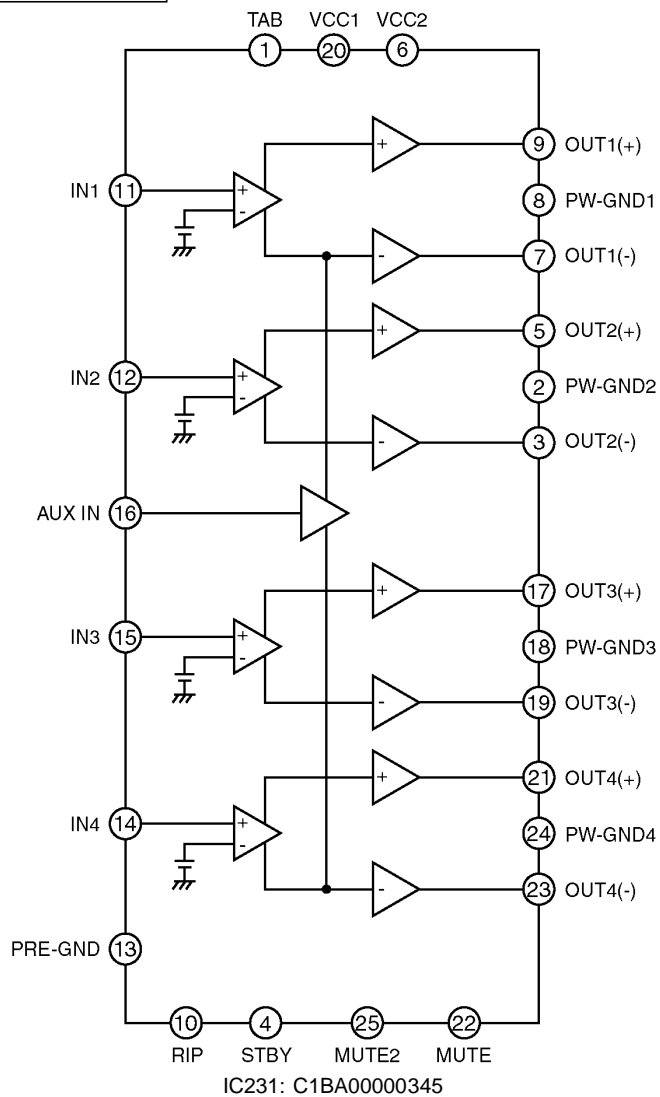
93	VOL-A	VOL encoder input terminal A	I	3.1	3.1	3.2
94	VOL-B	VOL encoder input terminal B	I	3.1	3.1	3.2
95	A-DIM	H: TAIL cancel off notice (ADIM OFF) L: TAIL cancel off notice (ADIM ON)	I	0	0	0
96	LCD-TEMP	Thermistor input for LCD temperature detection	I	2.6	2.6	2.6
97	REO-IN	Illumination input for rheostat illumination	I	0	0	0
98	AUX	AUX detection terminal	I	3.1	3.1	3.1
99	ST-SW1	Key input terminal 1 for steering switch input	I	3.1	3.1	3.2
100	ST-SW2	Key input terminal 2 for steering switch input	I	3.1	3.1	3.2

Note : Voltage measuerments are with respect to ground, with a voltmeter (internal resistance : 10M ohms).

7 PACKAGE AND IC BLOCK DIAGRAM

7.1. Main Block





1. Be sure to make sure to make your orders of replacement parts according to this list.
2. Important safety notice: Components, identified by \triangle mark have special characteristics important for safety. When replacing any of these components, use only manufacturer's specified parts.
3. Location keys in the remarks column indicates the general location of the parts shown in the exploded drawing, as in a road map.
4. The marking (RTL) indicates that Retention Time is limited for this item. After the discontinuation of assembly in production, the item will continue to be available for a specific period of time. The retention period of availability is dependent on the type of assembly, and in accordance with the laws governing part and product retention. After the end of this period, the assembly will no longer be available.
5. "E" marks in remarks column are indicated supply parts of Panasonic Automotive Systems Europe GmbH (PASE).
6. "A" or "B" marks in remarks column are indicated as follows:
 - A: CQ-TS6670LC
 - B: CQ-TS6671LC

Ref. No.	Part No.	Part Name & Description	Remarks
D252	B0ACCK000005	Diode	
D351	B0ACCK000005	Diode	
D352	B0ACCK000005	Diode	
D501	B0JDAE000004	Diode	
D701	YEADRB051L40	Diode	
D704	B0JCGD000002	Diode	
D721	B0BC5R000020	Diode	
D741	B0BC9R100001	Diode	
D742	B0BC5R600020	Diode	
D771	B0BC02700024	Diode	
D801	YEAECL10DS1	Diode	
D803	B0ADDJ000008	Diode	
D804	B0ADDJ000008	Diode	
D821	B0BC017A0059	Diode	
D822	B0BC017A0059	Diode	
D840	B0ACCK000005	Diode	
D842	B0BC01300028	Diode	
D843	B0BC01300028	Diode	
D850	B0ACCK000005	Diode	
D851	B0ACCK000005	Diode	
D852	B0ACCK000005	Diode	
D931	B0ACCK000005	Diode	
D932	B0ACCK000005	Diode	
D933	B0ACCK000005	Diode	
D934	B0ACCK000005	Diode	
CAPACITORS			
C50	YECUZ1H221JC	Ceramic, 220PF 50WV	
C51	YECUZ1H102KX	Ceramic, 1000PF 50WV	
C54	F1H1H100A226	Ceramic, 10PF 50WV	
C55	YECUZ1H040CC	Ceramic, 4PF 50WV	
C58	YECUZ1H103KX	Ceramic, 0.01μF 50WV	
C59	F2A1A101A435	Electrolytic, 100μF 10WV	
C62	YECUZ1H103KX	Ceramic, 0.01μF 50WV	
C63	F2A0J470A491	Electrolytic, 47μF 6.3WV	
C65	F1H1H100A226	Ceramic, 10PF 50WV	
C66	F1H1H100A226	Ceramic, 10PF 50WV	
C68	YECUS1H560JM	Ceramic, 56PF 50WV	
C200	F1H0J1050010	Ceramic, 1μF 6.3WV	
C201	F1H0J1050010	Ceramic, 1μF 6.3WV	
C202	F1H1H821A190	Ceramic, 820PF 50WV	
C203	F1H1H821A190	Ceramic, 820PF 50WV	
C204	YECUZ1H221JC	Ceramic, 220PF 50WV	
C205	YECUZ1H221JC	Ceramic, 220PF 50WV	
C210	F2A1A101A435	Electrolytic, 100μF 10WV	
C211	YECUZ1H103KX	Ceramic, 0.01μF 50WV	
C212	F2A1C100A492	Electrolytic, 10μF 16WV	
C213	YECUZ1H103KX	Ceramic, 0.01μF 50WV	
C219	F1J1A2250004	Ceramic, 2.2μF 10WV	
C220	F1J1A2250004	Ceramic, 2.2μF 10WV	
C222	F1H1H100A226	Ceramic, 10PF 50WV	
C223	F1H1H100A226	Ceramic, 10PF 50WV	
C225	F1J1E2240009	Ceramic, 0.22μF 25WV	
C226	F1J1E2240009	Ceramic, 0.22μF 25WV	
C227	F1J1E2240009	Ceramic, 0.22μF 25WV	
C228	F1J1E2240009	Ceramic, 0.22μF 25WV	
C230	F1H1E4730003	Ceramic, 0.047μF 25WV	
C231	F2A1C100A492	Electrolytic, 10μF 16WV	
C233	YECUZ1C104KX	Ceramic, 0.1μF 16WV	
C251	F1H0J1050010	Ceramic, 1μF 6.3WV	
C252	F1H0J1050010	Ceramic, 1μF 6.3WV	
C256	ECA1CM220I	Electrolytic, 22μF 16WV	
C300	F1H0J1050010	Ceramic, 1μF 6.3WV	
C301	F1H0J1050010	Ceramic, 1μF 6.3WV	
C302	F1H1H821A190	Ceramic, 820PF 50WV	
C303	F1H1H821A190	Ceramic, 820PF 50WV	
C304	YECUZ1H221JC	Ceramic, 220PF 50WV	
C305	YECUZ1H221JC	Ceramic, 220PF 50WV	
C319	F1J1A2250004	Ceramic, 2.2μF 10WV	
C320	F1J1A2250004	Ceramic, 2.2μF 10WV	
C322	F1H1H100A226	Ceramic, 10PF 50WV	
C323	F1H1H100A226	Ceramic, 10PF 50WV	

Ref. No.	Part No.	Part Name & Description	Remarks
C325	FIJ1E2240009	Ceramic, 0.22µF 25WV	
C326	FIJ1E2240009	Ceramic, 0.22µF 25WV	
C327	FIJ1E2240009	Ceramic, 0.22µF 25WV	
C328	FIJ1E2240009	Ceramic, 0.22µF 25WV	
C351	FIH0J1050010	Ceramic, 1µF 6.3WV	
C352	FIH0J1050010	Ceramic, 1µF 6.3WV	
C402	FIH0J1050010	Ceramic, 1µF 6.3WV	
C403	FIH0J1050010	Ceramic, 1µF 6.3WV	
C404	FIH0J1050010	Ceramic, 1µF 6.3WV	
C405	FIH0J1050010	Ceramic, 1µF 6.3WV	
C406	F2A0J101A491	Electrolytic, 100µF 6.3WV	
C408	FIH1E4730003	Ceramic, 0.047µF 25WV	
C409	ECA1CM220I	Electrolytic, 22µF 16WV	
C413	YECUZ1H103KX	Ceramic, 0.01µF 50WV	
C414	F2A1C100A492	Electrolytic, 10µF 16WV	
C417	YECUZ1C104KX	Ceramic, 0.1µF 16WV	
C418	FIH1H101A231	Ceramic, 100PF 50WV	
C419	YECUZ1C104KX	Ceramic, 0.1µF 16WV	
C420	YECUZ1C333KX	Ceramic, 0.033µF 16WV	
C423	F2A1A221A436	Electrolytic, 220µF 10WV	
C425	F2A0J101A491	Electrolytic, 100µF 6.3WV	
C428	YECUZ1E223KX	Ceramic, 0.022µF 25WV	
C430	YECUZ1H332KX	Ceramic, 3300PF 50WV	
C431	YECUZ1H332KX	Ceramic, 3300PF 50WV	
C432	YECUZ1C104KX	Ceramic, 0.1µF 16WV	
C433	YECUZ1E223KX	Ceramic, 0.022µF 25WV	
C434	YECUZ1E223KX	Ceramic, 0.022µF 25WV	
C436	YECUZ1H102KX	Ceramic, 1000PF 50WV	
C437	YECUZ1H102KX	Ceramic, 1000PF 50WV	
C438	YECUZ1E223KX	Ceramic, 0.022µF 25WV	
C439	YECUZ1H102KX	Ceramic, 1000PF 50WV	
C440	YECUZ1H102KX	Ceramic, 1000PF 50WV	
C441	FIJ0J1060007	Ceramic, 10µF 6.3WV	
C443	YECUZ1E223KX	Ceramic, 0.022µF 25WV	
C444	YECUZ1H150JC	Ceramic, 15PF 50WV	
C445	FIH1H130A231	Ceramic, 13PF 50WV	
C447	F2A1H4R7A480	Electrolytic, 4.7µF 50WV	
C449	YECUZ1C104KX	Ceramic, 0.1µF 16WV	
C450	YECUZ1C104KX	Ceramic, 0.1µF 16WV	
C452	YECUZ1C104KX	Ceramic, 0.1µF 16WV	
C453	FIH1H101A231	Ceramic, 100PF 50WV	
C454	F2A1H4R7A480	Electrolytic, 4.7µF 50WV	
C455	YECUZ1C104KX	Ceramic, 0.1µF 16WV	
C456	F2A1H4R7A480	Electrolytic, 4.7µF 50WV	
C457	YECUZ1C104KX	Ceramic, 0.1µF 16WV	
C458	FIJ0J1060007	Ceramic, 10µF 6.3WV	
C460	EEUFC0J101H	Electrolytic, 100µF 6.3WV	
C462	YECUZ1H102KX	Ceramic, 1000PF 50WV	
C464	YECUZ1H102KX	Ceramic, 1000PF 50WV	
C465	YECUZ1H102KX	Ceramic, 1000PF 50WV	
C466	YECUZ1H102KX	Ceramic, 1000PF 50WV	
C467	YECUZ1H102KX	Ceramic, 1000PF 50WV	
C469	YECUZ1H332KX	Ceramic, 3300PF 50WV	
C470	YECUZ1H332KX	Ceramic, 3300PF 50WV	
C475	YECUZ1H102KX	Ceramic, 1000PF 50WV	
C476	YECUZ1H102KX	Ceramic, 1000PF 50WV	
C500	F2A1A221A436	Electrolytic, 220µF 10WV	
C501	YECUZ1H103KX	Ceramic, 0.01µF 50WV	
C502	YECUZ1H103KX	Ceramic, 0.01µF 50WV	
C505	F2A1A221A436	Electrolytic, 220µF 10WV	
C600	YECUZ1C104KX	Ceramic, 0.1µF 16WV	
C603	F2A0J331A494	Electrolytic, 330µF 6.3WV	
C604	FIJ0J4750001	Ceramic, 4.7µF 6.3WV	
C605	FIH1H100A226	Ceramic, 10PF 50WV	
C606	FIH1H100A226	Ceramic, 10PF 50WV	
C607	YECUZ1H103KX	Ceramic, 0.01µF 50WV	
C608	FIH1H100A226	Ceramic, 10PF 50WV	
C611	YECUZ1H102KX	Ceramic, 1000PF 50WV	
C613	YECUZ1H103KX	Ceramic, 0.01µF 50WV	
C623	FIH1H220A487	Ceramic, 22PF 50WV	
C624	FIH1H220A487	Ceramic, 22PF 50WV	
C701	F2A1C2220062	Electrolytic, 2200µF 16WV	
C702	YECUZ1C104KX	Ceramic, 0.1µF 16WV	

Ref. No.	Part No.	Part Name & Description	Remarks
C703	FIJ1C1050013	Ceramic, 1µF 16WV	
C704	FIJ1C1050013	Ceramic, 1µF 16WV	
C705	FIJ1C1050013	Ceramic, 1µF 16WV	
C707	F2A0J101A491	Electrolytic, 100µF 6.3WV	
C708	FIH1E4730003	Ceramic, 0.047µF 25WV	
C709	FIH1E4730003	Ceramic, 0.047µF 25WV	
C711	FIK1C475A078	Ceramic, 4.7µF 16WV	
C712	F2A1C1020067	Electrolytic, 1000µF 16WV	
C713	EEUFC1A221H	Electrolytic, 220µF 10WV	
C717	F2A1A101A435	Electrolytic, 100µF 10WV	
C719	F2A1A101A435	Electrolytic, 100µF 10WV	
C721	FIK1C475A078	Ceramic, 4.7µF 16WV	
C722	FIK1C475A078	Ceramic, 4.7µF 16WV	
C724	F2A1C1020067	Electrolytic, 1000µF 16WV	
C725	FIJ1C1050013	Ceramic, 1µF 16WV	
C726	YECUZ1H102KX	Ceramic, 1000PF 50WV	
C742	F2A1A101A435	Electrolytic, 100µF 10WV	
C744	F2A1A101A435	Electrolytic, 100µF 10WV	
C775	ECEA1CPU222L	Electrolytic, 2200µF 16WV	
C781	FIJ1H1040014	Ceramic, 0.1µF 50WV	
C782	YECUZ1H103KX	Ceramic, 0.01µF 50WV	
C783	F2A1HR22A480	Electrolytic, 0.22µF 50WV	
C784	F2A1HR22A480	Electrolytic, 0.22µF 50WV	
C786	FIJ1H1040014	Ceramic, 0.1µF 50WV	
C787	YECUZ1C104KX	Ceramic, 0.1µF 16WV	
C788	YECUZ1H103KX	Ceramic, 0.01µF 50WV	
C789	YECUZ1H103KX	Ceramic, 0.01µF 50WV	
C803	FIJ1H221A665	Ceramic, 220PF 50WV	
C806	FIJ1H224A679	Ceramic, 0.22µF 50WV	
C807	FIJ1H224A679	Ceramic, 0.22µF 50WV	
C808	YECUS1H820JM	Ceramic, 82PF 50WV	
C809	YECUS1H820JM	Ceramic, 82PF 50WV	
C811	YECUS1H473KX	Ceramic, 0.047µF 50WV	
C820	FIJ1H221A665	Ceramic, 220PF 50WV	
C821	FIJ1H221A665	Ceramic, 220PF 50WV	
C822	FIJ1H221A665	Ceramic, 220PF 50WV	
C823	FIJ1H221A665	Ceramic, 220PF 50WV	
C824	FIJ1H1040014	Ceramic, 0.1µF 50WV	
C825	YECUS1H103ZF	Ceramic, 0.01µF 50WV	
C826	YECUS1H820JM	Ceramic, 82PF 50WV	
C827	YECUS1H820JM	Ceramic, 82PF 50WV	
C830	YECUZ1H103KX	Ceramic, 0.01µF 50WV	
C831	YECUZ1H103KX	Ceramic, 0.01µF 50WV	
C832	FIJ1H102A394	Ceramic, 1000PF 50WV	
C840	FIJ1H221A665	Ceramic, 220PF 50WV	
C851	F2A1HR47A501	Electrolytic, 0.47µF 50WV	
C860	FIJ1H1040014	Ceramic, 0.1µF 50WV	
C871	YECUZ1C104KX	Ceramic, 0.1µF 16WV	
C872	YECUZ1H103KX	Ceramic, 0.01µF 50WV	
C873	FIH1H220A487	Ceramic, 22PF 50WV	
C874	YECUZ1C104KX	Ceramic, 0.1µF 16WV	
C931	YECUZ1H221JC	Ceramic, 220PF 50WV	
C932	YECUZ1H221JC	Ceramic, 220PF 50WV	
C933	YECUZ1H221JC	Ceramic, 220PF 50WV	
C934	YECUZ1H221JC	Ceramic, 220PF 50WV	
C935	YECUZ1H221JC	Ceramic, 220PF 50WV	
C936	YECUZ1H221JC	Ceramic, 220PF 50WV	
C937	YECUZ1H221JC	Ceramic, 220PF 50WV	
C938	YECUZ1H221JC	Ceramic, 220PF 50WV	
C939	YECUZ1H221JC	Ceramic, 220PF 50WV	
C942	YECUZ1H221JC	Ceramic, 220PF 50WV	
C943	YECUZ1H221JC	Ceramic, 220PF 50WV	
C946	YECUZ1H103KX	Ceramic, 0.01µF 50WV	
C949	YECUZ1H102KX	Ceramic, 1000PF 50WV	
C957	YECUZ1H103KX	Ceramic, 0.01µF 50WV	
RESISTORS			
L68	ERJ3GEY0R00V	Chip, 0Ω 1/16W	
L69	ERJ3GEY0R00V	Chip, 0Ω 1/16W	
L70	ERJ3GEYJ1R0V	Chip, 1Ω 1/16W	
L71	ERJ3GEYJ1R0V	Chip, 1Ω 1/16W	
L74	ERJ3GEYJ1R0V	Chip, 1Ω 1/16W	

Ref. No.	Part No.	Part Name & Description	Remarks
L75	ERJ3GEYJ1R0V	Chip, 1 Ω 1/16W	
L426	ERJ8GEY0R00	Chip, 0 Ω 1/8W	
L500	ERJ3GEYJ1R0V	Chip, 1 Ω 1/16W	
L902	ERJ3GEY0R00V	Chip, 0 Ω 1/16W	
R50	ERJ3GEY0R00V	Chip, 0 Ω 1/16W	
R51	ERJ3GEYJ103V	Chip, 10k Ω 1/16W	
R200	ERJ3GEYJ224V	Chip, 220k Ω 1/16W	
R201	ERJ3GEYJ224V	Chip, 220k Ω 1/16W	
R202	ERJ3GEYJ223V	Chip, 22k Ω 1/16W	
R203	ERJ3GEYJ223V	Chip, 22k Ω 1/16W	
R204	ERJ3GEYJ103V	Chip, 10k Ω 1/16W	
R205	ERJ3GEYJ103V	Chip, 10k Ω 1/16W	
R206	ERJ3GEYJ682V	Chip, 6.8k Ω 1/16W	
R207	ERJ3GEYJ682V	Chip, 6.8k Ω 1/16W	
R210	ERJ3GEYJ472V	Chip, 4.7k Ω 1/16W	
R225	ERJ6GEYJ2R2	Chip, 2.2 Ω 1/10W	
R226	ERJ6GEYJ2R2	Chip, 2.2 Ω 1/10W	
R227	ERJ6GEYJ2R2	Chip, 2.2 Ω 1/10W	
R228	ERJ6GEYJ2R2	Chip, 2.2 Ω 1/10W	
R230	ERJ3GEYJ103V	Chip, 10k Ω 1/16W	
R252	ERJ6GEYJ682	Chip, 6.8k Ω 1/10W	
R254	ERJ6GEYJ682	Chip, 6.8k Ω 1/10W	
R261	ERJ3GEYJ221V	Chip, 220 Ω 1/16W	
R262	ERJ3GEYJ221V	Chip, 220 Ω 1/16W	
R263	ERJ3GEYJ104V	Chip, 100k Ω 1/16W	
R264	ERJ3GEYJ104V	Chip, 100k Ω 1/16W	
R265	ERJ3GEYJ393V	Chip, 39k Ω 1/16W	
R266	ERJ3GEYJ102V	Chip, 1k Ω 1/16W	
R300	ERJ3GEYJ224V	Chip, 220k Ω 1/16W	
R301	ERJ3GEYJ224V	Chip, 220k Ω 1/16W	
R302	ERJ3GEYJ223V	Chip, 22k Ω 1/16W	
R303	ERJ3GEYJ223V	Chip, 22k Ω 1/16W	
R304	ERJ3GEYJ103V	Chip, 10k Ω 1/16W	
R305	ERJ3GEYJ103V	Chip, 10k Ω 1/16W	
R306	ERJ3GEYJ682V	Chip, 6.8k Ω 1/16W	
R307	ERJ3GEYJ682V	Chip, 6.8k Ω 1/16W	
R325	ERJ6GEYJ2R2	Chip, 2.2 Ω 1/10W	
R326	ERJ6GEYJ2R2	Chip, 2.2 Ω 1/10W	
R327	ERJ6GEYJ2R2	Chip, 2.2 Ω 1/10W	
R328	ERJ6GEYJ2R2	Chip, 2.2 Ω 1/10W	
R352	ERJ6GEYJ682	Chip, 6.8k Ω 1/10W	
R354	ERJ6GEYJ682	Chip, 6.8k Ω 1/10W	
R361	ERJ3GEYJ221V	Chip, 220 Ω 1/16W	
R362	ERJ3GEYJ221V	Chip, 220 Ω 1/16W	
R363	ERJ3GEYJ104V	Chip, 100k Ω 1/16W	
R364	ERJ3GEYJ104V	Chip, 100k Ω 1/16W	
R400	ERJ3GEYJ1R0V	Chip, 1 Ω 1/16W	
R401	ERJ3GEYJ103V	Chip, 10k Ω 1/16W	
R402	ERJ3GEYJ1R0V	Chip, 1 Ω 1/16W	
R403	ERJ3GEYJ103V	Chip, 10k Ω 1/16W	
R404	ERJ3GEYJ1R0V	Chip, 1 Ω 1/16W	
R405	ERJ3GEYJ103V	Chip, 10k Ω 1/16W	
R406	ERJ3GEYJ1R0V	Chip, 1 Ω 1/16W	
R407	ERJ3GEYJ103V	Chip, 10k Ω 1/16W	
R410	ERJ3GEYJ1R0V	Chip, 1 Ω 1/16W	
R411	ERJ3GEYJ1R0V	Chip, 1 Ω 1/16W	
R413	ERJ3GEYJ100V	Chip, 10 Ω 1/16W	
R414	ERJ3RBD153V	Metal Glaze, 15k Ω 1/16W	
R415	ERJ3RBD432V	Metal Glaze, 4.3k Ω 1/16W	
R416	ERJ3RBD363V	Metal Glaze, 36k Ω 1/16W	
R418	ERJ3GEY0R00V	Chip, 0 Ω 1/16W	
R419	ERJ3GEYJ473V	Chip, 47k Ω 1/16W	
R421	ERJ3GEYJ473V	Chip, 47k Ω 1/16W	
R422	ERJ3GEYJ471V	Chip, 470 Ω 1/16W	
R423	ERJ3GEYJ471V	Chip, 470 Ω 1/16W	
R424	ERJ3GEYJ473V	Chip, 47k Ω 1/16W	
R426	ERJ3GEYJ1R0V	Chip, 1 Ω 1/16W	
R427	ERJ3GEYJ1R0V	Chip, 1 Ω 1/16W	
R428	ERJ3GEYJ220V	Chip, 22 Ω 1/16W	
R429	ERJ3GEYJ1R0V	Chip, 1 Ω 1/16W	
R430	ERJ3GEYJ1R0V	Chip, 1 Ω 1/16W	
R432	ERJ3GEYJ102V	Chip, 1k Ω 1/16W	
R433	ERJ3GEYJ100V	Chip, 10 Ω 1/16W	

Ref. No.	Part No.	Part Name & Description	Remarks
R434	ERJ3GEYJ102V	Chip, 1k Ω 1/16W	
R436	ERJ6GEY0R00V	Chip, 0 Ω 1/10W	
R437	ERJ6GEY0R00V	Chip, 0 Ω 1/10W	
R441	ERJ3GEYJ221V	Chip, 220 Ω 1/16W	
R442	ERJ3GEYJ101V	Chip, 100 Ω 1/16W	
R443	ERJ3GEYJ101V	Chip, 100 Ω 1/16W	
R444	ERJ3GEYJ223V	Chip, 22k Ω 1/16W	
R446	ERJ3GEYJ101V	Chip, 100 Ω 1/16W	
R447	ERJ3GEYJ101V	Chip, 100 Ω 1/16W	
R449	ERJ3GEYJ472V	Chip, 4.7k Ω 1/16W	
R450	ERJ3GEYJ472V	Chip, 4.7k Ω 1/16W	
R451	ERJ3GEYJ331V	Chip, 330 Ω 1/16W	
R453	ERJ3GEYJ101V	Chip, 100 Ω 1/16W	
R454	ERJ3GEYJ331V	Chip, 330 Ω 1/16W	
R470	ERJ3GEYJ1R0V	Chip, 1 Ω 1/16W	
R472	ERJ3GEYJ1R0V	Chip, 1 Ω 1/16W	
R500	ERJ3GEYJ102V	Chip, 1k Ω 1/16W	
R501	ERJ3GEYJ102V	Chip, 1k Ω 1/16W	
R502	ERJ3GEYJ102V	Chip, 1k Ω 1/16W	
R503	ERJ3GEYJ102V	Chip, 1k Ω 1/16W	
R504	ERJ3GEYJ102V	Chip, 1k Ω 1/16W	
R505	ERJ3GEYJ102V	Chip, 1k Ω 1/16W	
R604	ERJ3GEYJ103V	Chip, 10k Ω 1/16W	
R606	ERJ3GEY0R00V	Chip, 0 Ω 1/16W	
R608	ERJ3GEYJ104V	Chip, 100k Ω 1/16W	
R611	ERJ3GEYJ1R0V	Chip, 1 Ω 1/16W	
R612	ERJ3GEYJ104V	Chip, 100k Ω 1/16W	
R617	ERJ3GEYJ472V	Chip, 4.7k Ω 1/16W	
R618	ERJ3GEYJ472V	Chip, 4.7k Ω 1/16W	
R622	ERJ3GEYJ334V	Chip, 330k Ω 1/16W	
R630	ERJ3GEYJ471V	Chip, 470 Ω 1/16W	
R631	ERJ3GEYJ471V	Chip, 470 Ω 1/16W	
R633	ERJ3GEYJ472V	Chip, 4.7k Ω 1/16W	
R636	ERJ3GEYJ471V	Chip, 470 Ω 1/16W	
R637	ERJ3GEYJ471V	Chip, 470 Ω 1/16W	
R638	ERJ3GEYJ471V	Chip, 470 Ω 1/16W	
R639	ERJ3GEYJ472V	Chip, 4.7k Ω 1/16W	
R640	ERJ3GEYJ472V	Chip, 4.7k Ω 1/16W	
R641	ERJ3GEYJ472V	Chip, 4.7k Ω 1/16W	
R642	ERJ3GEYJ472V	Chip, 4.7k Ω 1/16W	
R643	ERJ3GEYJ102V	Chip, 1k Ω 1/16W	
R644	ERJ3GEYJ222V	Chip, 2.2k Ω 1/16W	
R656	ERJ3GEYJ104V	Chip, 100k Ω 1/16W	
R665	ERJ3GEYJ472V	Chip, 4.7k Ω 1/16W	
R671	ERJ3GEYJ102V	Chip, 1k Ω 1/16W	
R672	ERJ3GEYJ102V	Chip, 1k Ω 1/16W	
R673	ERJ3GEYJ102V	Chip, 1k Ω 1/16W	
R674	ERJ3GEYJ102V	Chip, 1k Ω 1/16W	
R675	ERJ3GEYJ102V	Chip, 1k Ω 1/16W	
R676	ERJ3GEYJ102V	Chip, 1k Ω 1/16W	
R677	ERJ3GEYJ102V	Chip, 1k Ω 1/16W	
R678	ERJ3GEYJ102V	Chip, 1k Ω 1/16W	
R681	ERJ3GEYJ102V	Chip, 1k Ω 1/16W	
R682	ERJ3GEYJ102V	Chip, 1k Ω 1/16W	
R683	ERJ3GEYJ102V	Chip, 1k Ω 1/16W	
R684	ERJ3GEYJ102V	Chip, 1k Ω 1/16W	
R685	ERJ3GEYJ472V	Chip, 4.7k Ω 1/16W	
R686	ERJ3GEYJ472V	Chip, 4.7k Ω 1/16W	
R687	ERJ3GEYJ472V	Chip, 4.7k Ω 1/16W	
R688	ERJ3GEYJ472V	Chip, 4.7k Ω 1/16W	
R690	ERJ3GEYJ104V	Chip, 100k Ω 1/16W	
R691	ERJ3GEYJ473V	Chip, 47k Ω 1/16W	
R693	ERJ3GEYJ104V	Chip, 100k Ω 1/16W	
R695	ERJ3GEYJ473V	Chip, 47k Ω 1/16W	
R697	ERJ3GEYJ473V	Chip, 47k Ω 1/16W	B
R698	ERJ3GEYJ473V	Chip, 47k Ω 1/16W	A
R699	ERJ3GEYJ104V	Chip, 100k Ω 1/16W	
R701	ERJ3GEYJ1R0V	Chip, 1 Ω 1/16W	
R702	ERJ3GEYJ1R0V	Chip, 1 Ω 1/16W	
R703	ERJ3GEY0R00V	Chip, 0 Ω 1/16W	
R705	ERJ3GEYJ1R0V	Chip, 1 Ω 1/16W	
R706	ERJ6GEY0R00V	Chip, 0 Ω 1/10W	
R707	ERJ6GEYJR47V	Chip, 0.47 Ω 1/10W	

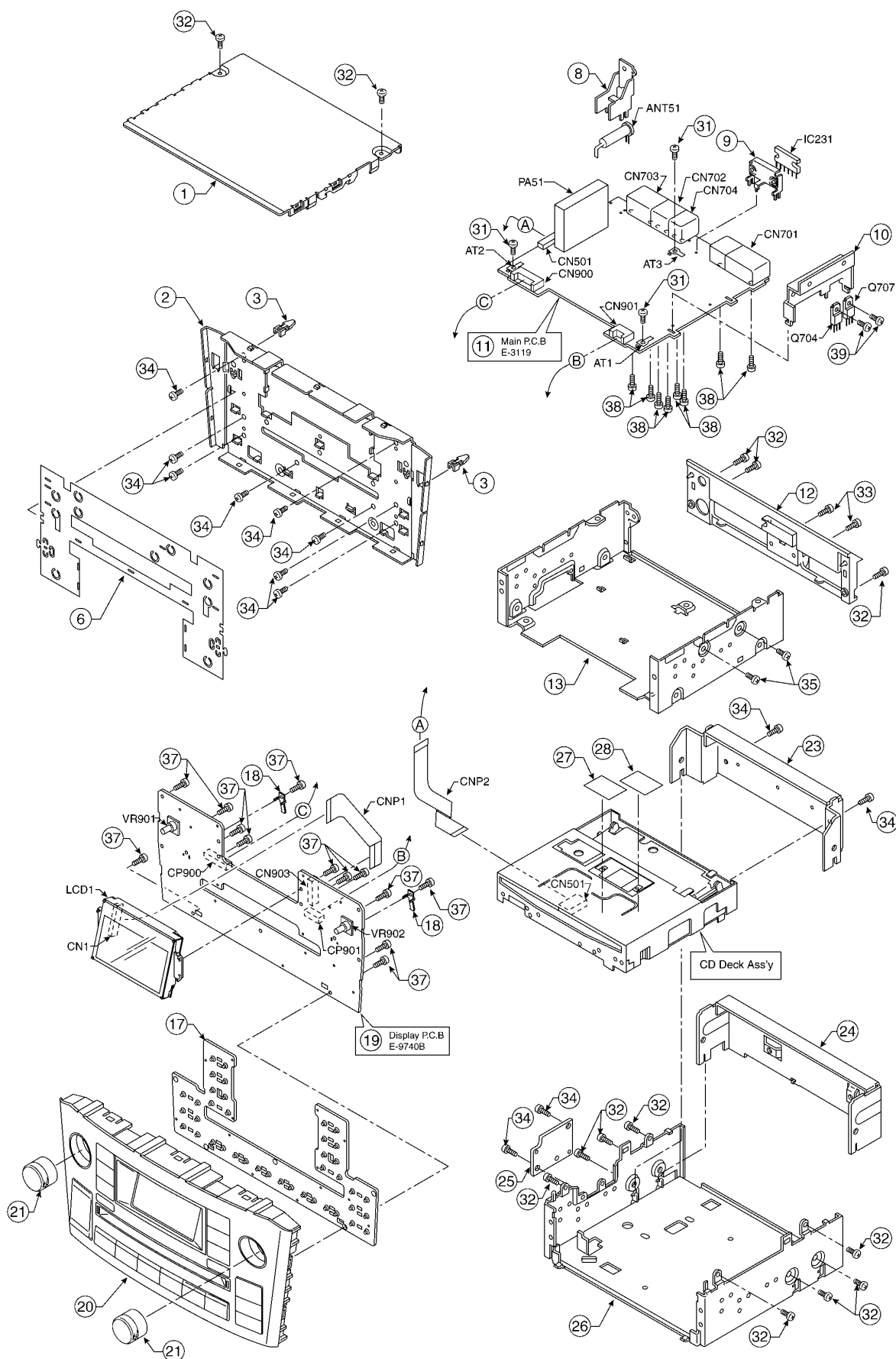
Ref. No.	Part No.	Part Name & Description	Remarks
R710	ERJ6GEYJR47V	Chip, 0.47 Ω 1/10W	
R711	ERJ6GEYJR47V	Chip, 0.47 Ω 1/10W	
R712	ERJ3GEYJ104V	Chip, 100k Ω 1/16W	
R721	ERJ6GEYJ102	Chip, 1k Ω 1/10W	
R731	ERJ3GEYJ1R0V	Chip, 1 Ω 1/16W	
R739	ERJ6GEYJ1R0V	Chip, 1 Ω 1/10W	
R741	ERJ3GEYJ821V	Chip, 820 Ω 1/16W	
R743	ERJ3GEYJ821V	Chip, 820 Ω 1/16W	
R776	ERJ3RBD273V	Metal Glaze, 27k Ω 1/16W	
R778	ERJ6GEYJ103	Chip, 10k Ω 1/10W	
R779	ERJ6GEYJ123	Chip, 12k Ω 1/10W	
R780	ERJ3GEYJ473V	Chip, 47k Ω 1/16W	
R781	ERJ3GEYJ473V	Chip, 47k Ω 1/16W	
R782	ERJ3RBD472V	Metal Glaze, 4.7k Ω 1/16W	
R783	ERJ3RBD563V	Metal Glaze, 56k Ω 1/16W	
R784	ERJ3RED274V	Metal Film, 270k Ω 1/16W	
R788	ERJ6GEYJ1R0V	Chip, 1 Ω 1/10W	
R805	ERJ6GEYJ512V	Chip, 5.1k Ω 1/10W	
R806	ERJ6GEYJ432V	Chip, 4.3k Ω 1/10W	
R814	ERJ6GEYJ103	Chip, 10k Ω 1/10W	
R815	ERJ3GEYJ152V	Chip, 1.5k Ω 1/16W	
R816	ERJ3GEYJ152V	Chip, 1.5k Ω 1/16W	
R817	ERJ6GEYJ103	Chip, 10k Ω 1/10W	
R818	ERJ6GEYJ102	Chip, 1k Ω 1/10W	
R820	ERG1SJ680E	Metal Oxid, 68 Ω 1W	
R821	ERJ6GEYJ472	Chip, 4.7k Ω 1/10W	
R822	ERJ8GEYJ101V	Chip, 100 Ω 1/8W	
R823	ERJ8GEYJ101V	Chip, 100 Ω 1/8W	
R824	ERJ3GEYJ103V	Chip, 10k Ω 1/16W	
R837	ERJ6GEYJ104	Chip, 100k Ω 1/10W	
R840	ERJ6GEYJ271	Chip, 270 Ω 1/10W	
R841	ERG1SJ101E	Metal Oxid, 100 Ω 1W	
R842	ERG1SJ101E	Metal Oxid, 100 Ω 1W	
R843	ERJ6GEYJ473	Chip, 47k Ω 1/10W	
R844	ERJ6GEYJ473	Chip, 47k Ω 1/10W	
R850	ERJ3GEYJ102V	Chip, 1k Ω 1/16W	
R853	ERJ3GEYJ563V	Chip, 56k Ω 1/16W	
R854	ERJ3GEYJ102V	Chip, 1k Ω 1/16W	
R855	ERJ3GEYJ104V	Chip, 100k Ω 1/16W	
R860	ERJ3GEYJ473V	Chip, 47k Ω 1/16W	
R861	ERJ6GEYJ472	Chip, 4.7k Ω 1/10W	
R870	ERJ3GEYJ473V	Chip, 47k Ω 1/16W	
R871	ERJ6GEYJ202V	Chip, 2k Ω 1/10W	
R872	ERJ6GEYJ202V	Chip, 2k Ω 1/10W	
R873	ERJ3GEYJ473V	Chip, 47k Ω 1/16W	
R875	ERJ3GEYJ472V	Chip, 4.7k Ω 1/16W	
R876	ERJ3GEYJ472V	Chip, 4.7k Ω 1/16W	
R877	ERJ3GEYJ472V	Chip, 4.7k Ω 1/16W	
R878	ERJ3GEYJ472V	Chip, 4.7k Ω 1/16W	
R879	ERJ3GEYJ472V	Chip, 4.7k Ω 1/16W	
R880	ERJ3GEYJ472V	Chip, 4.7k Ω 1/16W	
R919	ERJ3GEYJ152V	Chip, 1.5k Ω 1/16W	
R920	ERJ3GEYJ152V	Chip, 1.5k Ω 1/16W	
R922	ERJ3RED274V	Metal Film, 270k Ω 1/16W	
R923	ERJ3RBD473V	Metal Glaze, 47k Ω 1/16W	
R924	ERJ3GEYJ473V	Chip, 47k Ω 1/16W	
R930	ERJ3GEYJ473V	Chip, 47k Ω 1/16W	
R931	ERJ3GEYJ473V	Chip, 47k Ω 1/16W	
R932	ERJ3GEYJ473V	Chip, 47k Ω 1/16W	
R933	ERJ3GEYJ473V	Chip, 47k Ω 1/16W	
R934	ERJ3GEYJ473V	Chip, 47k Ω 1/16W	
R935	ERJ3GEYJ104V	Chip, 100k Ω 1/16W	
R936	ERJ3GEYJ104V	Chip, 100k Ω 1/16W	
CONNECTORS			
CN501	K1MN14B00036	Connector, 14P	
CN701	K1FA116B0031	Connector, 10P+6P	
CN702	K1FA112B0023	Connector, 12P	
CN703	K1FA120B0016	Connector, 20P	
CN704	K1FA108B0023	Connector, 8P	
CN900	K1KA22BA0119	Connector, 22P	
CN901	K1KA12BA0119	Connector, 12P	

Ref. No.	Part No.	Part Name & Description	Remarks
COILS			
L50	G1C1R0JA0036	Coil	
L51	G1C1R10JA0036	Coil	
L53	G1C10NJ00021	Coil	
L55	G1C33NJ00011	Coil	
L59	J0JBC0000073	Coil	
L61	J0JCC0000186	Coil	
L63	J0JCC0000053	Coil	
L65	J0JBC0000073	Coil	
L66	J0JCC0000186	Coil	
L67	J0JCC0000186	Coil	
L72	J0JCC0000186	Coil	
L73	J0JCC0000186	Coil	
L76	J0JBC0000073	Coil	
L400	J0JBC0000073	Coil	
L406	J0JBC0000073	Coil	
L407	J0JBC0000073	Coil	
L408	J0JBC0000073	Coil	
L409	J0JBC0000073	Coil	
L412	J0JBC0000073	Coil	
L413	J0JBC0000073	Coil	
L414	J0JBC0000073	Coil	
L415	J0JBC0000073	Coil	
L416	J0JBC0000073	Coil	
L417	J0JBC0000073	Coil	
L418	J0JBC0000073	Coil	
L421	J0JBC0000073	Coil	
L422	J0JBC0000073	Coil	
L423	J0JBC0000073	Coil	
L424	J0JBC0000073	Coil	
L425	J0JBC0000073	Coil	
L427	G1C4R7M00026	Coil	
L502	J0JBC0000073	Coil	
L600	J0JBC0000073	Coil	
L601	J0JBC0000073	Coil	
L602	J0JBC0000073	Coil	
L603	J0JBC0000073	Coil	
L701	G0A111J00003	Coil	
L901	J0JBC0000073	Coil	
CRYSTALS			
XL401	H0J416500005	Crystal Oscillator	
XL601	H0D471400003	Crystal Oscillator	
FILTERS			
Z51	J0LM00000001	Noise Filter	
ZL840	YECCL51R206T	EMI Filter	
ZL841	YECCL51R206T	EMI Filter	
[E-9740B] Display Block			
DIODES			
D901	B3ACB0000067	Diode	
D902	B3ACB0000067	Diode	
D903	B3ACB0000067	Diode	
D904	B3ACB0000067	Diode	
D905	B3ACB0000067	Diode	
D906	B3ACB0000067	Diode	
D907	B3ACB0000067	Diode	
D908	B3ACB0000067	Diode	
D909	B3ACB0000067	Diode	
D910	B3ACB0000067	Diode	
D911	B3ACB0000067	Diode	
D912	B3ACB0000067	Diode	
D913	B3ACB0000067	Diode	
D914	B3ACB0000067	Diode	
D915	B3ACB0000068	Diode	
D916	B3ACB0000067	Diode	

Ref. No.	Part No.	Part Name & Description	Remarks
D917	B3ACB0000067	Diode	
D918	B3ACB0000067	Diode	
D919	B3ACB0000067	Diode	
D920	B3ACB0000067	Diode	
D921	B3ACB0000067	Diode	
D922	B3ACB0000068	Diode	
D923	B3ACB0000067	Diode	
D925	B3ACB0000067	Diode	
D927	B3ACB0000067	Diode	
D928	B3ACB0000067	Diode	
D929	B3ACB0000067	Diode	
D930	B3ACB0000067	Diode	
D931	B3ACB0000068	Diode	
D932	B3ACB0000068	Diode	
D933	B3ACB0000068	Diode	
D934	B3ACB0000067	Diode	
D935	B3ACB0000067	Diode	
D936	B3ACB0000067	Diode	
D937	B3ACB0000067	Diode	
D938	B3ACB0000067	Diode	
D939	B3ACB0000067	Diode	
D940	B3ACB0000067	Diode	
D941	B3ACB0000067	Diode	
D942	B3ACB0000067	Diode	
D943	B3ACB0000067	Diode	
D944	B3ACB0000067	Diode	
D945	B3ACB0000067	Diode	
D970	B0ADCJ000007	Diode	B
RESISTORS			
L980	ERJ3GEY0R00V	Chip, 0Ω 1/16W	
R901	ERJ6GEYJ471	Chip, 470Ω 1/10W	
R903	ERJ6GEYJ471	Chip, 470Ω 1/10W	
R905	ERJ6GEYJ471	Chip, 470Ω 1/10W	
R907	ERJ6GEYJ471	Chip, 470Ω 1/10W	
R909	ERJ6GEYJ471	Chip, 470Ω 1/10W	A
R909	ERJ6GEYJ561	Chip, 560Ω 1/10W	B
R911	ERJ6GEYJ271	Chip, 270Ω 1/10W	
R913	ERJ6GEYJ471	Chip, 470Ω 1/10W	
R915	ERJ6GEYJ221	Chip, 220Ω 1/10W	A
R915	ERJ6GEYJ271	Chip, 270Ω 1/10W	B
R917	ERJ6GEYJ331	Chip, 330Ω 1/10W	
R919	ERJ6GEYJ331	Chip, 330Ω 1/10W	
R921	ERJ6GEYJ331	Chip, 330Ω 1/10W	A
R921	ERJ6GEYJ221	Chip, 220Ω 1/10W	B
R923	ERJ6GEYJ221	Chip, 220Ω 1/10W	A
R923	ERJ6GEYJ271	Chip, 270Ω 1/10W	B
R925	ERJ6GEYJ821	Chip, 820Ω 1/10W	A
R925	ERJ6GEYJ102	Chip, 1kΩ 1/10W	B
R926	ERJ6GEYJ821	Chip, 820Ω 1/10W	A
R927	ERJ6GEYJ331	Chip, 330Ω 1/10W	A
R927	ERJ6GEYJ821	Chip, 820Ω 1/10W	B
R928	ERJ6GEYJ821	Chip, 820Ω 1/10W	B
R929	ERJ6GEYJ221	Chip, 220Ω 1/10W	A
R929	ERJ6GEYJ471	Chip, 470Ω 1/10W	B
R930	ERJ6GEYJ821	Chip, 820Ω 1/10W	B
R931	ERJ6GEYJ221	Chip, 220Ω 1/10W	A
R931	ERJ6GEYJ241V	Chip, 240Ω 1/10W	B
R933	ERJ6GEYJ271	Chip, 270Ω 1/10W	
R935	ERJ6GEYJ221	Chip, 220Ω 1/10W	A
R935	ERJ6GEYJ271	Chip, 270Ω 1/10W	B
R937	ERJ6GEYJ221	Chip, 220Ω 1/10W	
R939	ERJ6GEYJ621V	Chip, 620Ω 1/10W	A
R939	ERJ6GEYJ471	Chip, 470Ω 1/10W	B
R941	ERJ6GEYJ621V	Chip, 620Ω 1/10W	A
R941	ERJ6GEYJ471	Chip, 470Ω 1/10W	B
R943	ERJ6GEYJ621V	Chip, 620Ω 1/10W	A
R943	ERJ6GEYJ102	Chip, 1kΩ 1/10W	B
R944	ERJ6GEYJ102	Chip, 1kΩ 1/10W	B
R955	ERJ6GEYJ391	Chip, 390Ω 1/10W	
R957	ERJ6GEY0R00V	Chip, 0Ω 1/10W	
R970	ERJ3GEY0R00V	Chip, 0Ω 1/16W	

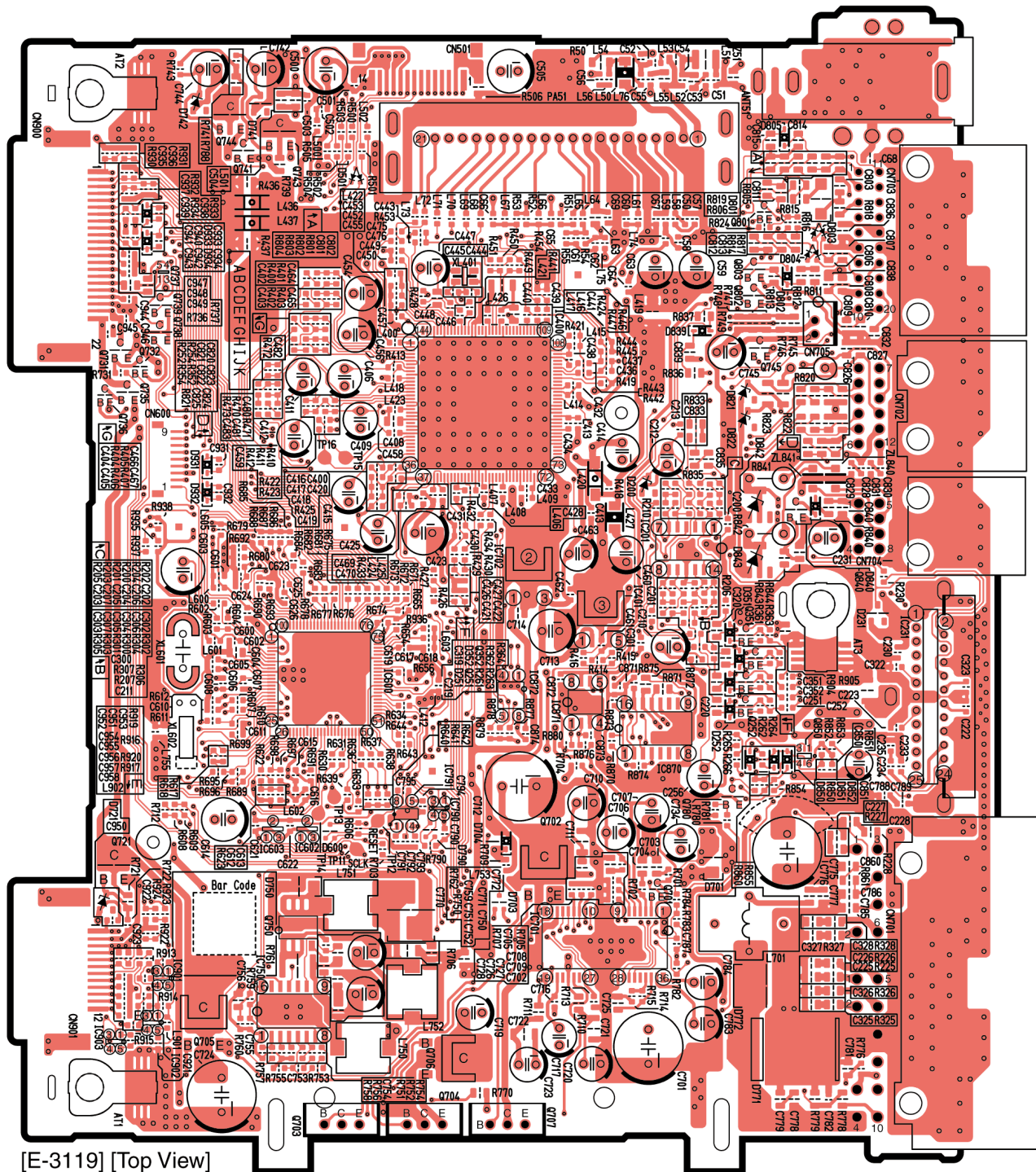
Ref. No.	Part No.	Part Name & Description	Remarks
R971	ERJ6GEYJ101	Chip, 100Ω 1/10W	
R972	ERJ3GEY0R00V	Chip, 0Ω 1/16W	
R974	ERJ6GEY0R00V	Chip, 0Ω 1/10W	
R995	ERJ6GEYJ202V	Chip, 2kΩ 1/10W	
R996	ERJ6GEYJ202V	Chip, 2kΩ 1/10W	
CONNECTORS			
CN903	K1MN20A00021	Connector, 20P	
CP900	K1KB22AA0059	Connector, 22P	
CP901	K1KB12AA0059	Connector, 12P	
SWITCH			
VR902	K9AA009B0017	Switch	
LCD			
LCD1	L5DZAHE00008	INDICATOR PANEL LCD	E
VARIABLE RESISTOR			
VR901	K0N130C00011	Variable resistor	
Mechanical Parts			
MISCELLANEOUS			
CNP1	K9ZZ00001430	Flat Cable, 20P	E
CNP2	K9ZZ00001433	Flat Cable, 14P	E
ANT51	YEAA10091	Antenna Receptacle	
AT1	K4CD08000002	Terminal	
AT2	K4CD08000002	Terminal	
AT3	K4CD08000002	Terminal	
1	YEFA031868	Upper Cover	
2	YGFA071026A	Chassis, Display PCB	E
3	YEFK061054	Clip	
6	YGFV012583	Insulator	E
8	YEFX0216100	Bracket, ANT51	
9	YEFX0215142	Bracket, IC231	
10	YEFX0216173	Mounting Base, Q704, Q707	
11	YGP0PT3119Z9	Main PCB w/Components	A, E, RTL
11	YGP0PT3119Y9	Main PCB w/Components	B, E, RTL
12	YEFF011122	Heat Sink	
13	YEFA012083A	Upper Chassis	
17	YEFR07222	Rubber Contact	E
18	YEFX0215255	Earth Fix	
19	YEP0PT9740A0	Display PCB w/Component	A, E, RTL
19	YEP0PT9740B0	Display PCB w/Component	B, E, RTL
20	YEF0C0266263A	Escutcheon Ass'y	A, E
20	YEF0C0266264A	Escutcheon Ass'y	B, E
21	YEF0E027950	Knob	A, E
21	YEF0E027955	Knob	B, E
23	YGF0X0217417	Bracket, CD Deck	E
24	YEFX0216099	Rear Bracket	
25	YEFX9993107A	Mechanism Part	
26	YEFA012084B	Bottom Chassis	
27	YEFM031551	Laser Seal 1	
28	YEFM031550	Laser Seal 2	
31	YEJT03015A	Screw	3
32	XTB3+6FFJ	Tapping Screw	13
33	YEJT03289A	Tapping Screw	2
34	YEJS06303A	Screw	12
35	YEJT03312A	Screw	2
37	XTB2+6GFJ	Tapping Screw	13
38	YEJT01103	Screw	8
39	YEJS05035A	Screw	2

9 EXPLODED VIEW (Unit)



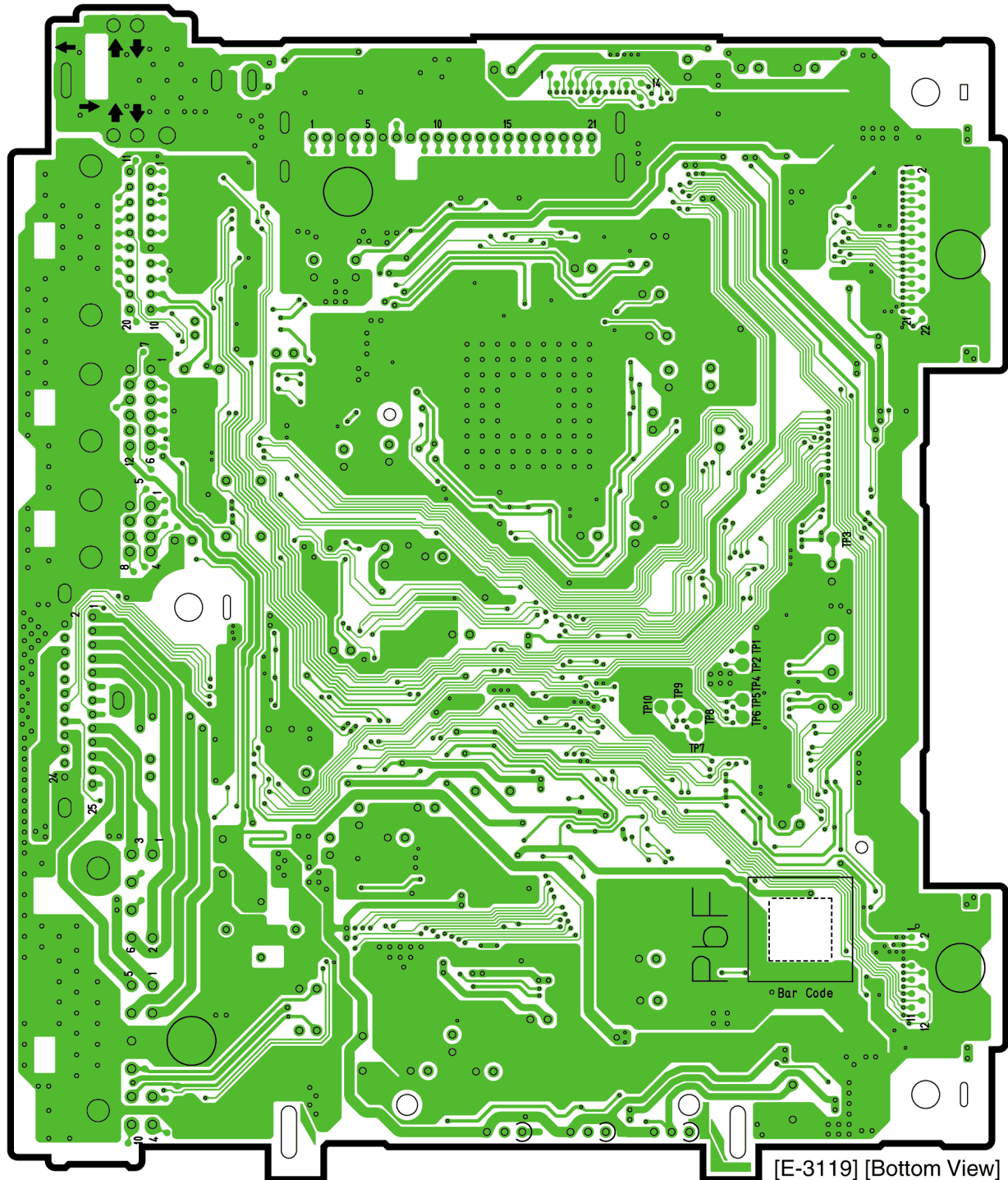
10 WIRING DIAGRAM

10.1. Main Block (Top View)



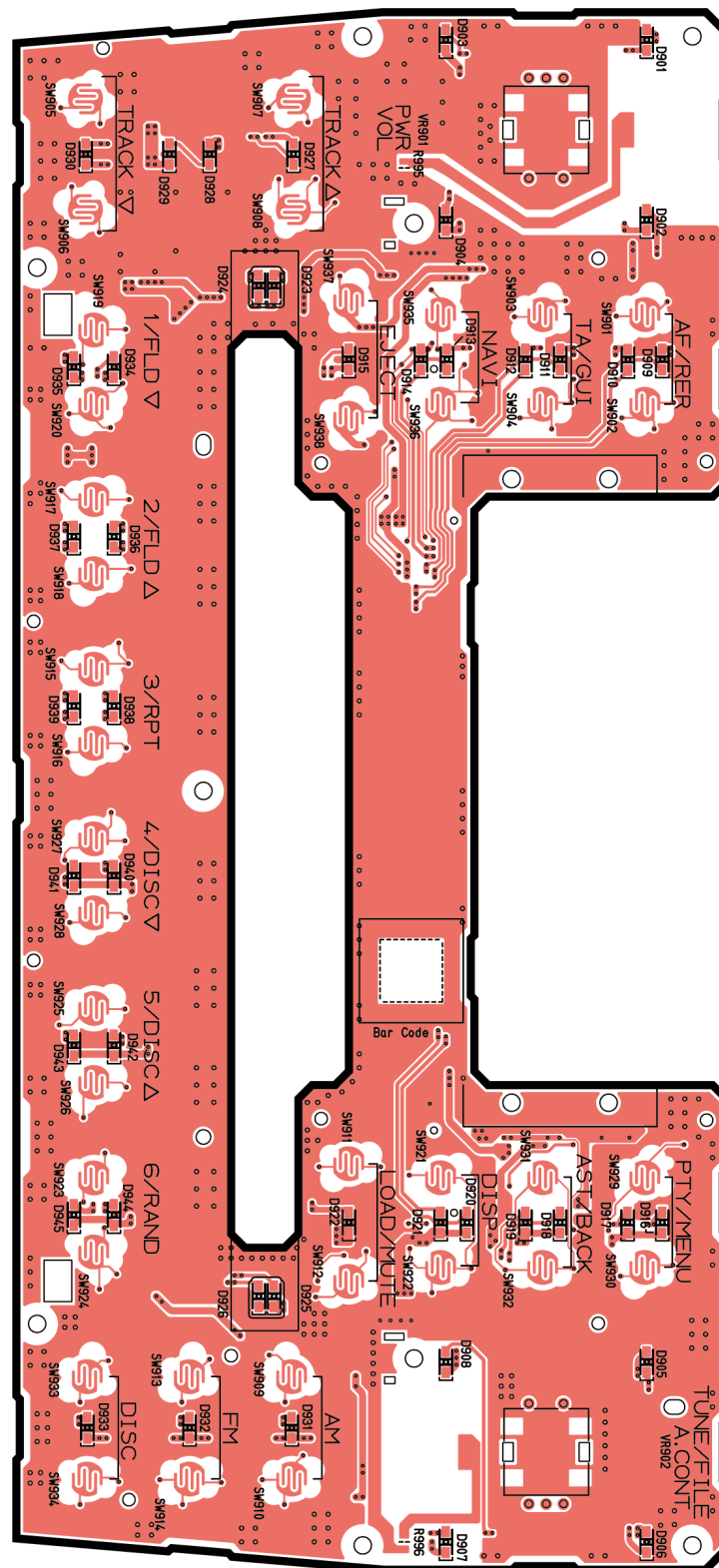
[E-3119] [Top View]

10.2. Main Block (Bottom View)



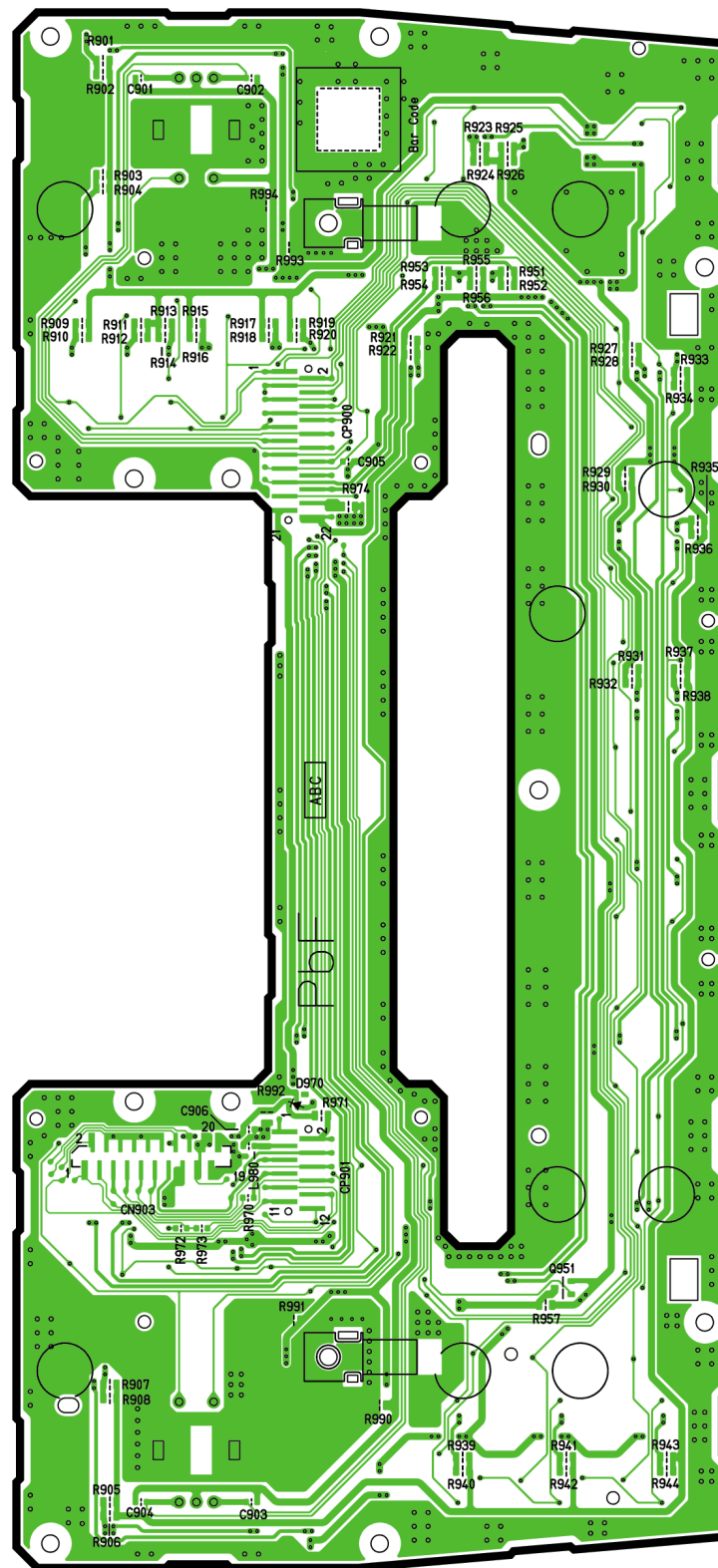
[E-3119] [Bottom View]

10.3. Display Block (Top View)



[E-9740B] [Top View]

10.4. Display Block (Bottom View)



[E-9740B] [Bottom View]

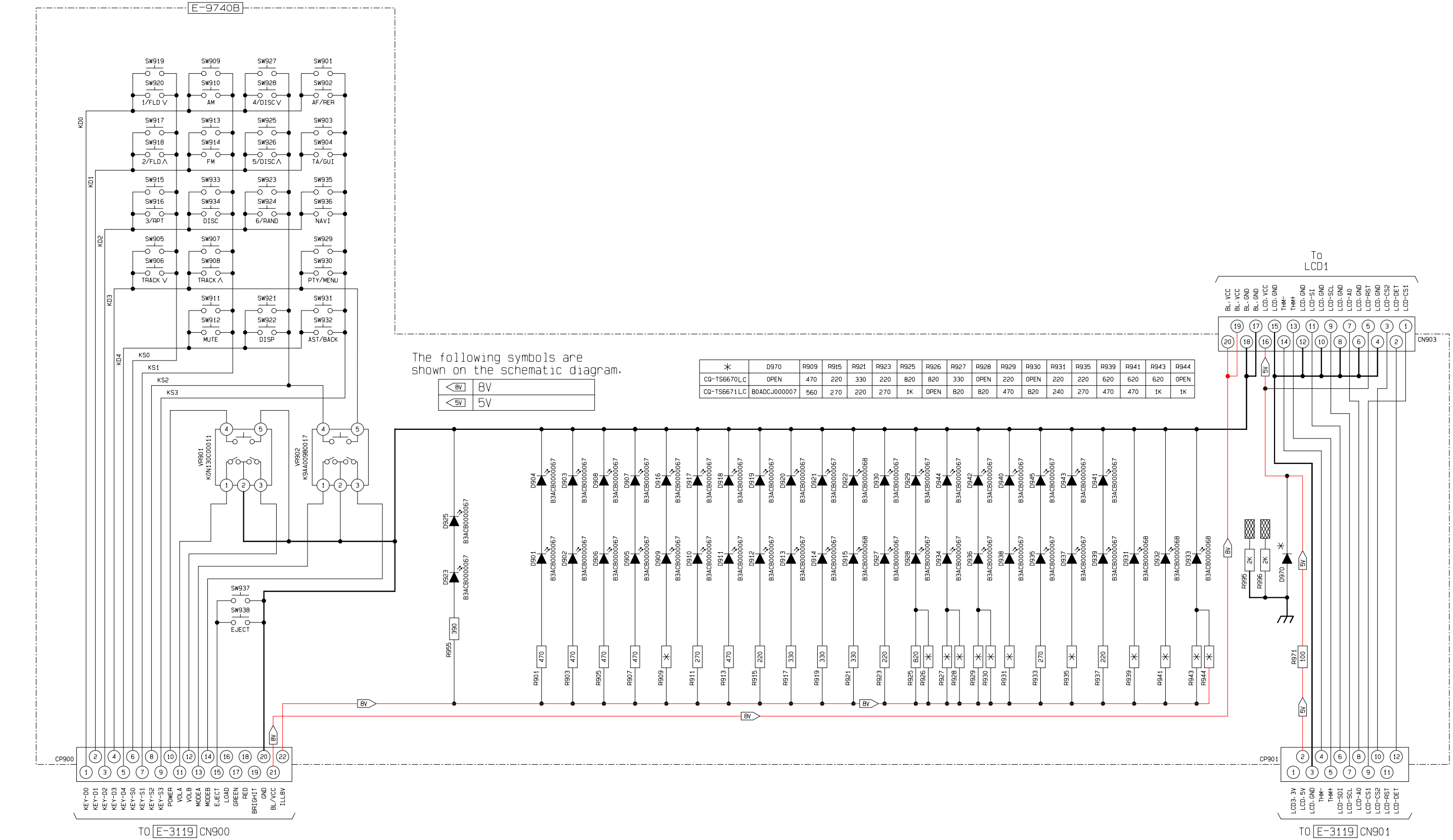
CQ-TS6670LC/TS6671LC DISPLAY P.C.B

The following symbols are shown on the schematic diagram.

	+B
	ACC
	10V
	5V
	3.3V
	1.8V
	RADIO
	CD
	AUDIO
	L.R.I.

CO-TS6670LC-7C-TS6671LC
MAJN

11.2. Display Block



12 MEMO

PARTS AVAILABILITY

HOW TO ORDER REPLACEMENT PARTS

Replacement parts can be ordered from either a Parts Depot or directly from Toyota Motor Corporation. When ordering, please refer to the Replacement Parts List in this service manual to insure that you receive the correct part.

Please enter not only part number(s) but also unit number of TOYOTA car radio / car stereo in a REMARKS column of the order sheet.

DISPONIBILIDAD DE PARTES DE REPUESTO

METODO DE HACER PEDIDOS DE PARTES DEREPUESO

Partes de repuesto pueden pedirse tanto a un Depósito de Partes de Repuesto (Parts Depot) como directamente a la Toyota Motor Corporation. En hacer los pedidos, refiérase a la Lista de Partes de Repuesto que se encuentra en este manual de servicio a fin de asegurarse de su recibo de las partes correctas.

Favor llenar la columna OBSERVACIONES de la hoja de pedido no solamente con el (los) número(s) de part(s) sino también con el número de la unidad de radio/estéreo de carro, TOYOTA.

DISPONIBILITE DE PIECES

MOYEN DE COMMANDER DES PIECES DE RECHANGE.

Les pièces de rechange seront commandées au Dépôt de Pièces (Parts Depot) ou directement à Toyota Motor Corporation. Lors d'une commande, veuillez consulter le Liste de pièces de rechange dans ce manuel d'atelier pour être sûr que vous recevez la pièce exacte. Veuillez écrire non seulement le(s) numéro(s) de pièce mais aussi le numéro d'unité de TOYOTA auto-radio/auto-stéréo dans la colonne REMARQUES du bulletin de commande.

TOYOTA PARTS AND ACCESSORIES ORDER															PAGE NO. _____ OF _____																																													
TO OVERSEAS PARTS DEPARTMENT TOYOTA MOTOR CORPORATION NAGOYA, JAPAN										DATE _____					B O ORDER NO. _____																																													
<input type="checkbox"/> WEEKLY AIR ORDER <input type="checkbox"/> EMERGENCY AIR ORDER <input type="checkbox"/> NEW PARTS ORDER FOR MODEL: <input type="checkbox"/> PRINTED MATTER <input type="checkbox"/> OTHERS:										AIR FREIGHT					TO (PORT) _____																																													
<table border="1" style="width: 100%; border-collapse: collapse;"> <tr> <td style="width: 5%;">1</td><td style="width: 10%;">CD</td><td style="width: 5%;">3</td><td style="width: 5%;">4</td><td style="width: 15%;">DIST F/D CODE</td><td style="width: 5%;">10</td><td style="width: 5%;">11</td><td style="width: 15%;">ORDER NO</td><td style="width: 5%;">18</td><td style="width: 5%;">19</td><td style="width: 10%;">H/I</td> </tr> <tr> <td></td><td>D A 5</td><td></td><td>9</td><td></td><td></td><td></td><td></td><td></td><td></td><td>2</td> </tr> </table>																				1	CD	3	4	DIST F/D CODE	10	11	ORDER NO	18	19	H/I		D A 5		9							2																			
1	CD	3	4	DIST F/D CODE	10	11	ORDER NO	18	19	H/I																																																		
	D A 5		9							2																																																		
<table border="1" style="width: 100%; border-collapse: collapse;"> <tr> <th>20</th><th>ITEM NO</th><th>23</th><th>24</th><th>PART NO</th><th>38</th><th>39</th><th>QTY</th><th>44</th><th>45</th><th>TRF</th><th>47</th><th>48</th><th>LOCATION</th><th>55</th><th>56</th><th>指定</th><th>価格</th><th>64</th><th>65</th><th>引当指示日</th><th>70</th><th>REMARKS</th> </tr> <tr> <td></td><td></td><td></td><td></td><td>YEFC021421</td><td></td><td></td><td></td><td></td><td></td><td></td><td></td><td></td><td></td><td></td><td></td><td></td><td></td><td></td><td></td><td></td><td></td><td>86120-32040</td> </tr> </table>															20	ITEM NO	23	24	PART NO	38	39	QTY	44	45	TRF	47	48	LOCATION	55	56	指定	価格	64	65	引当指示日	70	REMARKS					YEFC021421																		86120-32040
20	ITEM NO	23	24	PART NO	38	39	QTY	44	45	TRF	47	48	LOCATION	55	56	指定	価格	64	65	引当指示日	70	REMARKS																																						
				YEFC021421																		86120-32040																																						

U.S.A.

PANASONIC PARTS DEPOT

EASTERN REGIONAL PARTS DEPOT

1225 NORTHBROOK PARKWAY SUITE 2-400
SUWANEE, GA 30174
PHONE : (404) 388-6800

WESTERN REGIONAL PARTS DEPOT

20421 84TH AVE. SOUTH
KENT, WA 98032
PHONE : (206)-395-7343

CANADA

PANASONIC PARTS DEPOT

TRONTO

PANASONIC CANADA INC.
5770 AMBLER DRIVE, MISSISSAUGA, ONTARIO L4W 2T3
PHONE : (905)-624-5010

EUROPE

PANASONIC PARTS DEPOT

HAMBURG

PANASONIC SERVICE DEUTSCHLAND G.M.B.H.
2000 HAMBURG 28 AUSSCHLAGER BILLDEICH 32 F.R. GERMANY
PHONE : (040)-789511

SCANDINAVIA

PANASONIC PARTS DEPOT

STOCKHOLM

PANASONIC SERVICE SCANDINAVIAN A.B.
INSTRUMENTVAGEN 29-31, BOX 43047,
100 72 STOCKHOLM, SWEDEN
PHONE : 08-190180

AUSTRALIA

PANASONIC PARTS DEPOT

SYDNEY

PANASONIC AUSTRALIA PTY, LTD
1 GARIGAL ROAD, BELROSE, N.S.W. 2085
PHONE : (02)-986-7640

MELBOURNE

PANASONIC AUSTRALIA PTY, LTD
1 CARIBBEAN DRIVE, SCORESBY VIC. 3179
PHONE : (03)-213-8888

ADELAIDE

PANASONIC AUSTRALIA PTY, LTD
125 PORT ROAD, HINDMARSH S.A. 5007
PHONE : (08)-346-3999

BRISBANE

PANASONIC AUSTRALIA PTY, LTD
494 NUDGE ROAD, HENDRA QUEENSLAND. 4012
PHONE : (07)-268-6455

PERTH

PANASONIC AUSTRALIA PTY, LTD
37 KEWDALE ROAD, WELSHPOOL, W.A. 6106
PHONE : (09)-451-7211

OTHER COUNTRIES

Please order from the Overseas Parts Department, Toyota Motor Corporation, using the normal Parts & Accessories Order Form for ordering Automobile parts.

OTROS PAISES

Favor hacer pedidos al Departamento Partes al Ultramar (Overseas parts Department), Toyota Motor Corporation utilizando el formulario normal de pedido de partes y accesorios que se usa para pedir las partes de repuestos de automóviles.

AUTRES PAYS

Veuillez commandes au département de pièces d'outre-mer (Overseas Parts Department), Toyota Motor Corporation, en vous servant du Bulletin de Commande Pièces & Accessoires pour des commandes de pièces d'automobile.

TOYOTA MOTOR CORPORATION

OVERSEAS SERVICE DIVISION

Printed in Japan (K)
2006.04
(Recycled Paper)

YGFD15314

'06. 03. 22

CONTENTS

	Page		Page
1 FEATURES	2	6 IC BLOCK DIAGRAM (CD Deck)	5
2 LASER PRODUCTS	2	7 REPLACEMENT PARTS LIST	6
3 WIRING CONNECTION (CD Deck)	2	8 EXPLODED VIEW (CD Deck)	8
4 BLOCK DIAGRAM (CD Deck)	3	9 WIRING DIAGRAM (CD Servo)	9
5 TERMINALS DESCRIPTION (CD Deck)	4	10 SCHEMATIC DIAGRAM (CD Servo)	11

1 FEATURES

- NCD-930 CD Deck.
- 12cm CD only.
- The specifications are based on the main unit.

2 LASER PRODUCTS

Do not take apart this unit or attempt to make any changes yourself.

This unit is very intricate that uses a laser pickup to retrieve information from the surface of compact discs. The laser is carefully shielded so that its rays remain inside the cabinet. Therefore, never try to disassemble the player or alter any of its parts since you may be exposed to laser rays and dangerous voltages.

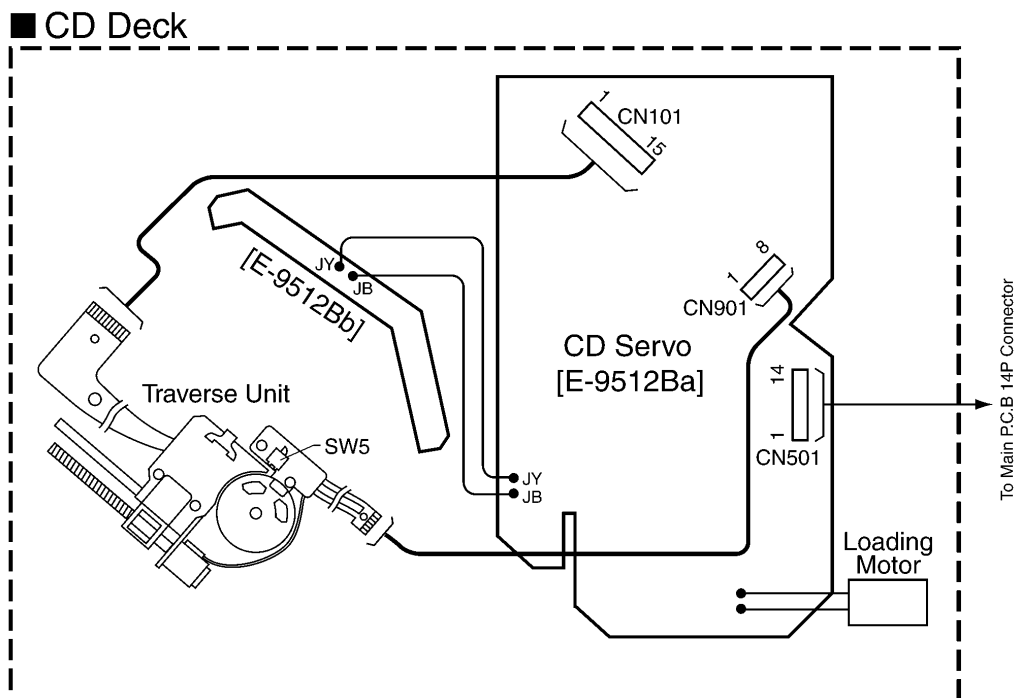
Laser products :

Wave length	780nm
Laser power	No hazardous radiation is emitted with safety protection.

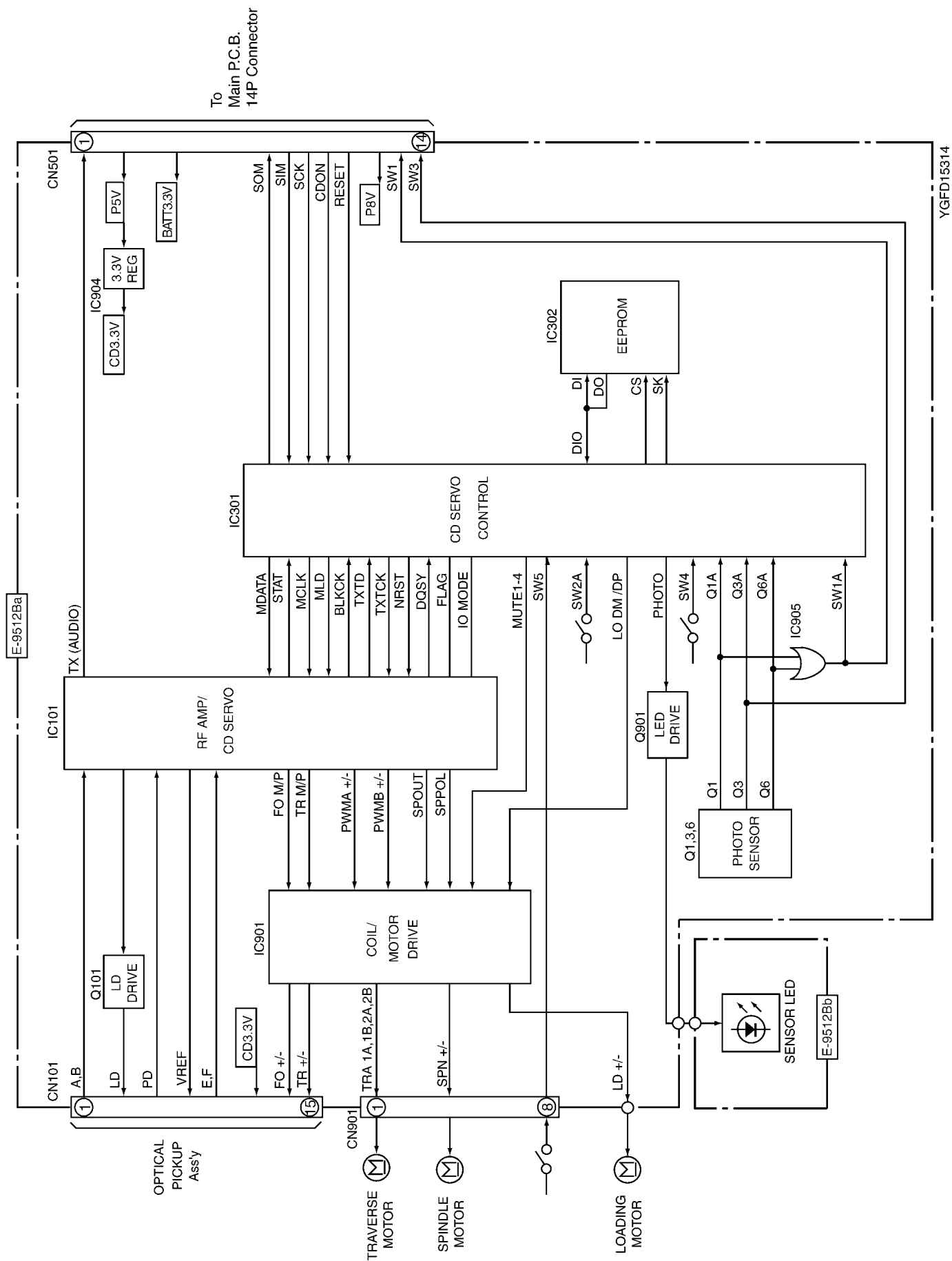
Caution

This product utilizes a laser.
Use of controls or adjustments or performance of procedures other than those specified herein may result in hazardous radiation exposure.

3 WIRING CONNECTION (CD Deck)



4 BLOCK DIAGRAM (CD Deck)



5 TERMINALS DESCRIPTION (CD Deck)

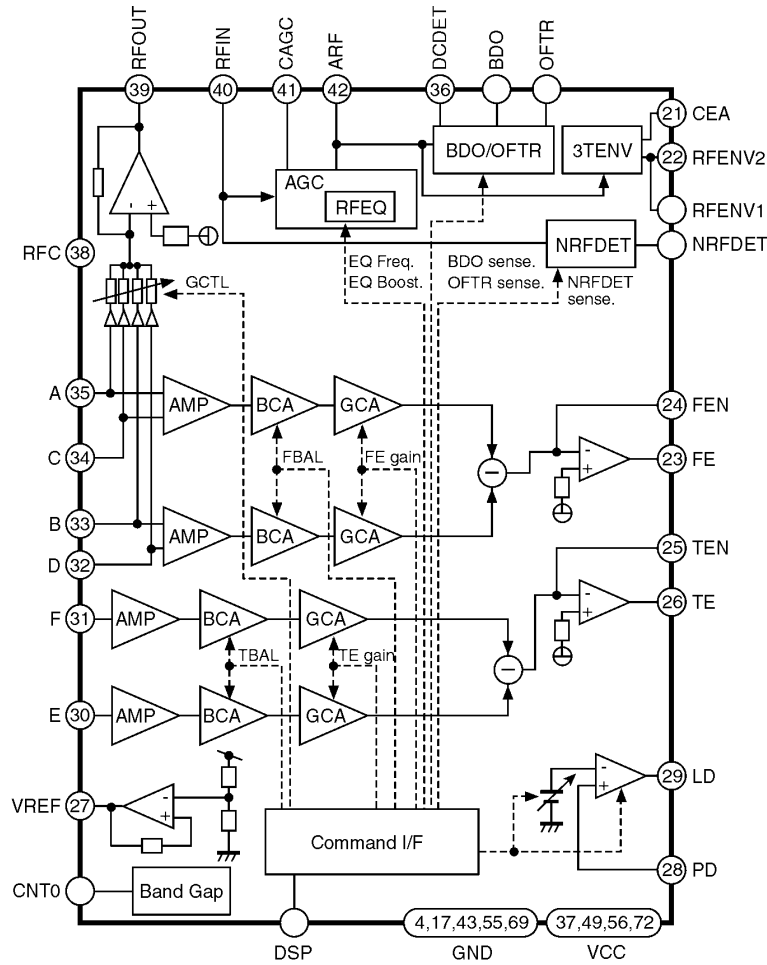
IC301 : MNBC77CWPUC

Pin No.	Port	Description	I/O
1	SW4	Mechanics SW clamping (H: Non-completion L: Completion)	I
2	SW5	Mechanics SW inner (H:OFF L: Surroundings ON)	I
3	Q6A	Photo sensor DISC IN (H: Shading L: Penetration)	I
4	TEMP	For thermometry	I
5	VPP	Power supply for flash rewriting (+5V)	-
6	VREF+	Reference supply for analog to digital converter (+3.3V)	-
7	VDD	Power supply supply terminal (+3.3V)	-
8	OSC2	Microcomputer system clock output (7.37MHz)	O
9	OSC1	Microcomputer system clock input (7.37MHz)	I
10	VSS	GND	-
11	XI	Maiconsabcrocc input (unused: GND)	I
12	NC	No Connection	-
13	MMOD	Memory mode switch terminal (GND fixation)	I
14	NRESET	Microcomputer reset input	I
15	SOM	Serial communications output data	O
16	SIM	Serial communications input data	I
17	SCKM	Serial communications clock input	I
18	MDATA	Microcomputer command data signaling	O
19	STAT	Servo LSI status signal	I
20	MCLK	Microcomputer command clock pulse	O
21	MLD	Microcomputer command load signal	O
22	NC	No Connection	-
23	NC	No Connection	-
24	NC	No Connection	-
25	NC	No Connection	-
26	NC	No Connection	-
27	BLKCK	Subcode block clock pulse	I
28	DQSY	CD-TEXT/SUBQ synchronizing signal	I
29	GND	GND	O
30	CDON	Operation mode signal	I
31	IO MODE	-	-
32	FLAG	-	-
33	TXTD	CD-TEXT data signaling	I
34	TXTCK	CD-TEXT clock pulse	I
35	NC	No Connection	-
36	NC	No Connection	-
37	PC4	Loading mute	O
38	PC3	Spindle mute	O
39	PC2	Traverse mute	O
40	PC1	Actuator mute	O
41	NRST	Servo LSI reset signal	O
42	NC	No Connection	-
43	LODP	Loading motor forward output signal	O
44	LODM	Loading motor negative direction output signal	O
45	NC	No Connection	-
46	NC	No Connection	-
47	NC	No Connection	-
48	CS	Serial communications chip selection for EEPROM	O
49	DIO	Serial communications input-output data for EEPROM	I/O
50	SK	Serial communications clock output for EEPROM	O
51	NC	No Connection	-
52	NC	No Connection	-
53	NC	No Connection	-

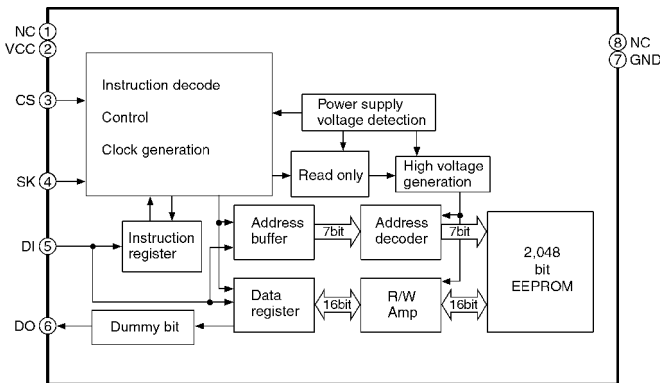
Pin No.	Port	Description	I/O
54	NC	No Connection	-
55	NC	No Connection	-
56	PHOTO	Photo sensor actuating signal	O
57	NC	No Connection	-
58	NC	No Connection	-
59	SW1A	OR signal of Q1 and Q6	I
60	SW5	SW5 (INNER)	I
61	VREF-	Reference supply for analog to digital converter (GND)	I
62	Q1A	Photo sensor DISC IN (H: Shading L: Penetration)	I
63	SW2A	Mechanics SW feeder arm (H:NO DISC L:DISC IN)	I
64	Q3A	Photo sensor DISC OUT (H: Shading L: Penetration)	I

6 IC BLOCK DIAGRAM (CD Deck)

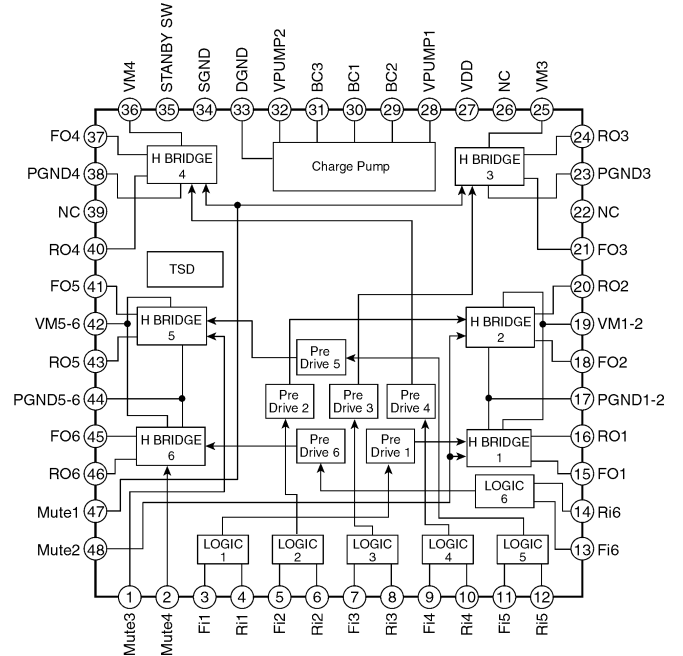
IC101 MNG7945ECUC



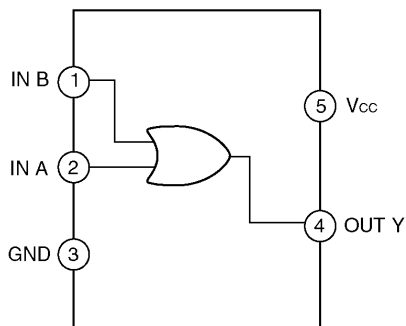
IC302 C3EBDG000058



IC901 AN41015A-VF



IC905 C0JBAE000333



7 REPLACEMENT PARTS LIST

Notes :

1. Be sure to make your orders of replacement parts according to this list.
2. Important safety notice: Components, identified by Δ mark have special characteristics important for safety. When replacing any of these components, use only manufacturer's specified parts.
3. Location keys in the remarks column indicates the general location of the parts shown in the exploded drawing, as in a road map.
4. The marking (RTL) indicates that Retention Time is limited for this item. After the discontinuation of assembly in production, the item will continue to be available for a specific period of time. The retention period of availability is dependent on the type of assembly, and in accordance with the laws governing part and product retention. After the end of this period, the assembly will no longer be available.

Ref. No.	Part No.	Part Name & Description	Remarks
[E9512B] CD Servo Block			
IC's AND TRANSISTORS			
IC101	MNG7945ECUC	IC	
IC301	MNBC77CWPUC	IC	
IC302	C3EBDG000058	IC	
IC901	AN41015A-VF	IC	
IC904	C0CBABF00024	IC	
IC905	C0JBABE000333	IC	
Q1	B3HB00000022	Transistor	
Q3	B3HB00000022	Transistor	
Q6	B3HB00000022	Transistor	
Q101	BIADBD000005	Transistor	
Q901	BIGBCF000005	Transistor	
DIODES			
D301	MA152WKTX	Diode	
D801	B3EB00000014	Diode	
D803	B3EB00000014	Diode	
D806	B3EB00000014	Diode	
CAPACITORS			
C101	F1H0J1050010	Ceramic, 1pF 6.3WV	
C102	F1H1H471A792	Ceramic, 470PF 50WV	
C103	YECUZ1C104KX	Ceramic, 0.1pF 16WV	
C104	F3H0J1070005	Tantalum, 100pF 6.3WV	
C106	F1H1H820A231	Ceramic, 82PF 50WV	
C107	F1H1H820A231	Ceramic, 82PF 50WV	
C108	F1H1H820A231	Ceramic, 82PF 50WV	
C109	F1H1H820A231	Ceramic, 82PF 50WV	
C111	F1H0J1050010	Ceramic, 1pF 6.3WV	
C112	F1H1H471A792	Ceramic, 470PF 50WV	
C115	YECUZ1C104KX	Ceramic, 0.1pF 16WV	
C116	YECUZ1C104KX	Ceramic, 0.1pF 16WV	
C117	F1H0J1050010	Ceramic, 1pF 6.3WV	
C118	F1J0J106A014	Ceramic, 10pF 6.3WV	
C119	YECUZ1C333KX	Ceramic, 0.033pF 16WV	
C121	YECUZ1C104KX	Ceramic, 0.1pF 16WV	
C122	F1J0J106A014	Ceramic, 10pF 6.3WV	
C124	YECUZ1C104KX	Ceramic, 0.1pF 16WV	
C125	YECUZ1C104KX	Ceramic, 0.1pF 16WV	
C126	F1H1H821A190	Ceramic, 820PF 50WV	
C127	F1J0J106A014	Ceramic, 10pF 6.3WV	
C128	YECUZ1E223KX	Ceramic, 0.022pF 25WV	
C129	YECUZ1C104KX	Ceramic, 0.1pF 16WV	

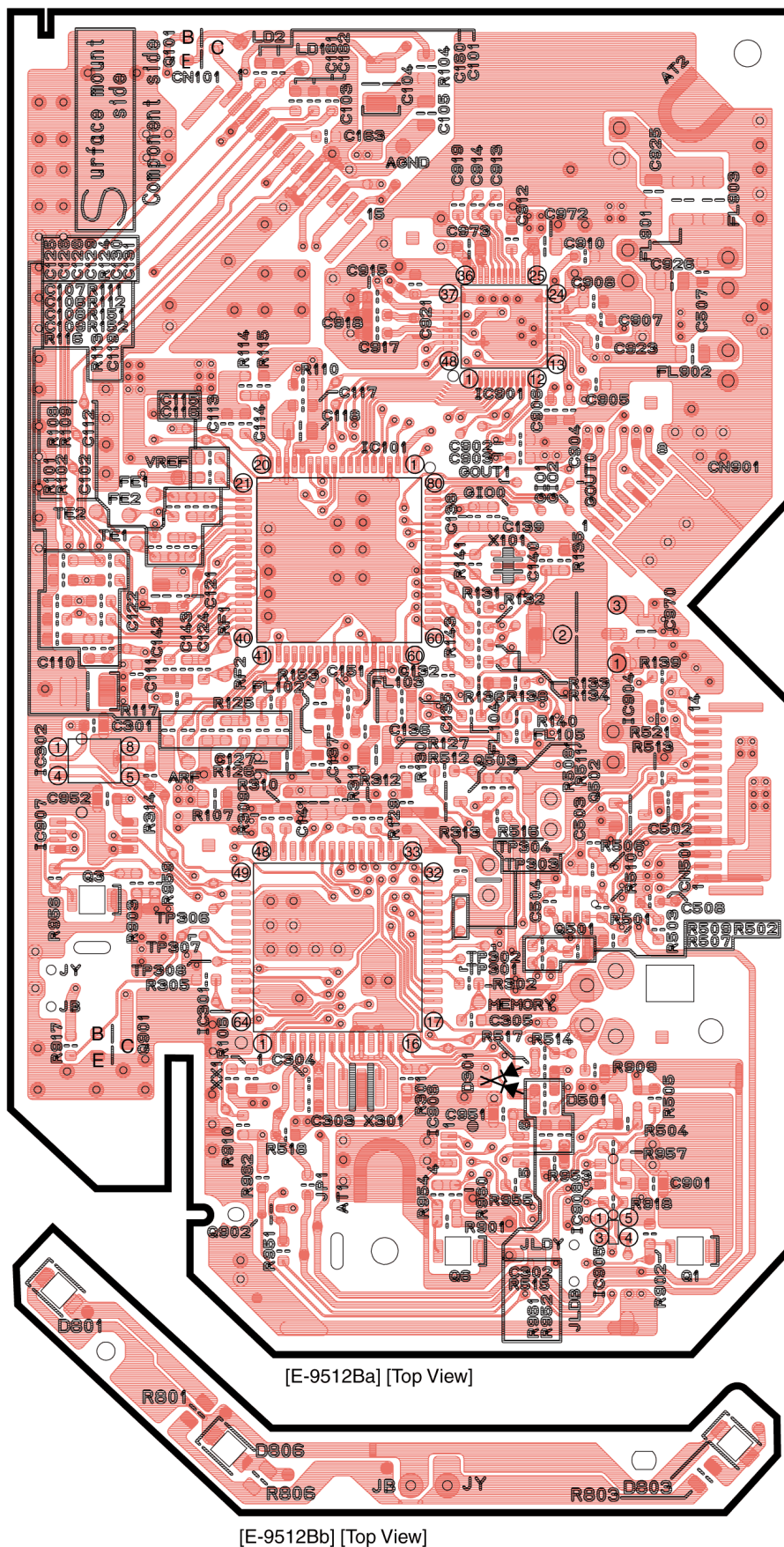
Ref. No.	Part No.	Part Name & Description	Remarks
C130	F1H1H102A831	Ceramic, 1000PF 50WV	
C131	YECUZ1C104KX	Ceramic, 0.1pF 16WV	
C132	F1H0J1050010	Ceramic, 1pF 6.3WV	
C136	F1H0J1050010	Ceramic, 1pF 6.3WV	
C139	YECUZ1C104KX	Ceramic, 0.1pF 16WV	
C140	F1H1H103A221	Ceramic, 0.01pF 50WV	
C143	F1H1H1010005	Ceramic, 100PF 50WV	
C151	F1H0J1050010	Ceramic, 1pF 6.3WV	
C160	F1H1H820A231	Ceramic, 82PF 50WV	
C161	F1H1H820A231	Ceramic, 82PF 50WV	
C162	F1H1H820A231	Ceramic, 82PF 50WV	
C163	F1H1H820A231	Ceramic, 82PF 50WV	
C301	YECUZ1C104KX	Ceramic, 0.1pF 16WV	
C302	F1H1H103A221	Ceramic, 0.01pF 50WV	
C304	F1H0J1050010	Ceramic, 1pF 6.3WV	
C502	F1H1H820A231	Ceramic, 82PF 50WV	
C503	F1H1H820A231	Ceramic, 82PF 50WV	
C504	F1H1H820A231	Ceramic, 82PF 50WV	
C506	F2A1A101A450	Electrolytic, 100pF 10WV	
C507	F1H0J1050010	Ceramic, 1pF 6.3WV	
C508	F1H0J1050010	Ceramic, 1pF 6.3WV	
C901	YECUZ1C104KX	Ceramic, 0.1pF 16WV	
C902	F1H1H1010005	Ceramic, 100PF 50WV	
C903	F1H1H1010005	Ceramic, 100PF 50WV	
C909	F2A1A101A450	Electrolytic, 100pF 10WV	
C911	F2A1A101A450	Electrolytic, 100pF 10WV	
C912	YECUZ1C104KX	Ceramic, 0.1pF 16WV	
C913	YECUZ1C104KX	Ceramic, 0.1pF 16WV	
C914	YECUZ1C104KX	Ceramic, 0.1pF 16WV	
C919	YECUZ1C104KX	Ceramic, 0.1pF 16WV	
C922	F2A1A101A450	Electrolytic, 100pF 10WV	
C923	F1H0J1050010	Ceramic, 1pF 6.3WV	
C972	F1J0J106A014	Ceramic, 10pF 6.3WV	
C973	F1J0J106A014	Ceramic, 10pF 6.3WV	
RESISTORS			
FL103	ERJ3GEY0R00V	Chip, 0 Ω 1/16W	
FL901	ERJ8GEYJ2R2V	Chip, 2.2 Ω 1/8W	
FL902	ERJ6GEY0R00V	Chip, 0 Ω 1/10W	
FL903	ERJ8GEYJ2R2V	Chip, 2.2 Ω 1/8W	
R101	ERJ3GEYJ102V	Chip, 1k Ω 1/16W	
R102	ERJ3GEYJ333V	Chip, 33k Ω 1/16W	
R104	ERJ6GEYJ1R0V	Chip, 1 Ω 1/10W	
R106	ERJ3GEYJ103V	Chip, 10k Ω 1/16W	
R107	ERJ6GEY0R00V	Chip, 0 Ω 1/10W	
R108	ERJ3GEYJ102V	Chip, 1k Ω 1/16W	
R109	ERJ3GEYJ333V	Chip, 33k Ω 1/16W	
R111	ERJ3GEYJ152V	Chip, 1.5k Ω 1/16W	
R112	ERJ3GEYJ152V	Chip, 1.5k Ω 1/16W	
R115	ERJ3GEY0R00V	Chip, 0 Ω 1/16W	
R124	ERJ3GEYJ823V	Chip, 82k Ω 1/16W	
R125	ERJ3GEYJ561V	Chip, 560 Ω 1/16W	
R126	ERJ3GEY0R00V	Chip, 0 Ω 1/16W	
R127	ERJ6GEYJ220	Chip, 22 Ω 1/10W	
R130	ERJ3GEY0R00V	Chip, 0 Ω 1/16W	
R131	ERJ3GEYJ332V	Chip, 3.3k Ω 1/16W	
R132	ERJ3GEYJ121V	Chip, 120 Ω 1/16W	
R133	ERJ3GEYJ121V	Chip, 120 Ω 1/16W	
R134	ERJ3GEYJ121V	Chip, 120 Ω 1/16W	
R135	ERJ3GEYJ104V	Chip, 100k Ω 1/16W	
R141	ERJ3GEYJ105V	Chip, 1M Ω 1/16W	
R151	ERJ3GEY0R00V	Chip, 0 Ω 1/16W	
R152	ERJ3GEY0R00V	Chip, 0 Ω 1/16W	
R301	ERJ3GEYJ563V	Chip, 56k Ω 1/16W	
R305	ERJ3GEYJ332V	Chip, 3.3k Ω 1/16W	
R313	ERJ3GEY0R00V	Chip, 0 Ω 1/16W	
R314	ERJ3GEYJ103V	Chip, 10k Ω 1/16W	
R503	ERJ3GEYJ473V	Chip, 47k Ω 1/16W	
R504	ERJ3GEY0R00V	Chip, 0 Ω 1/16W	
R505	ERJ3GEY0R00V	Chip, 0 Ω 1/16W	
R507	ERJ3GEYJ473V	Chip, 47k Ω 1/16W	
R508	ERJ3GEY0R00V	Chip, 0 Ω 1/16W	

11

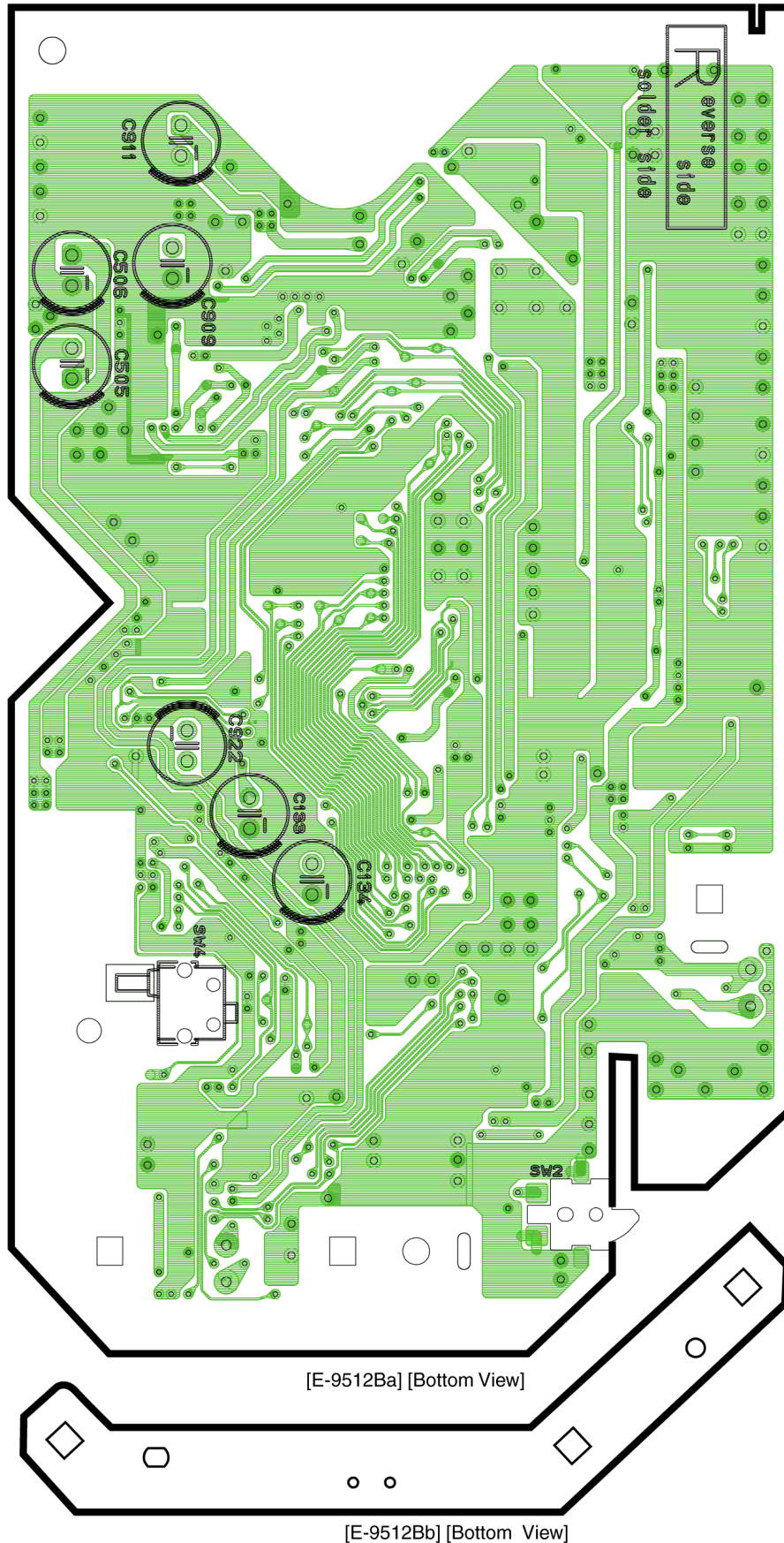


9 WIRING DIAGRAM (CD Servo)

9.1. CD Servo Block (Top View)



9.2. CD Servo Block (Bottom View)



YGFD15314 CD Servo P.C.B

10 SCHEMATIC DIAGRAM (CD Servo)

