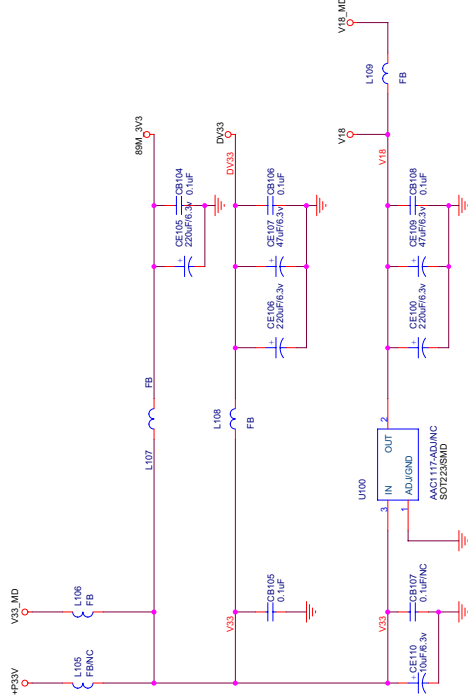
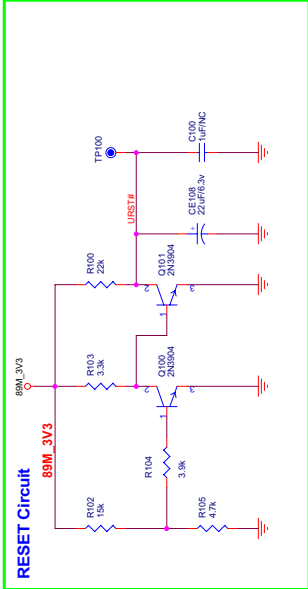
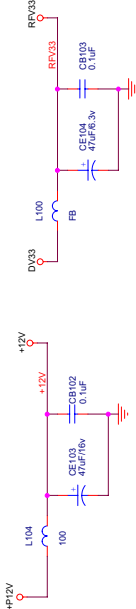
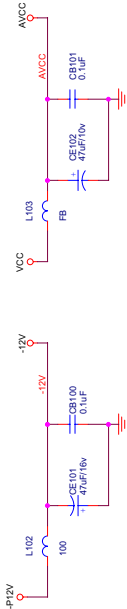
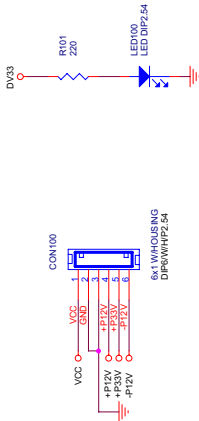


- 1 INDEX & POWER / RESET
- 2 MT1389M LQFP128
- 3 SDRAM & FLASH & MOTOR
- 4 AUDIO & MIC I/F
- 5 VIDEO I/F
- 6 MCR & USB & Gxyz I/F



Rev	History	PH	Date
V1	Original release		2007.11.20

MT1389M 128 PIN GPIO LIST

NAME	PIN	FEATURES
TRAY_OPEN	14	STBY [VR_CD]
TRAY_CLOSE	15	TROPEN IOA [VR_DVD]
FG / GPIO2	18	TRIN
UP1_6	28	V5CK HDMI_SCL
UP1_7	29	V5DA HDMI_SDA
GPIO3	34	CEC
GPIO4	35	LIMIT TROUT
GPO5	7	TRCLOSE
GPIO6	31	Gxyz_SW TxD [TROPEN/IOA]
GPIO7	39	SD_CLK MS_CLK
GPIO8	38	SD_CMD MS_BS
GPIO9	37	SD_DATA MS_DATA
GPIO10	81	HPLG
GPIO11	30	SCART1 HSYNC# RxD
GPIO12	80	ASPDIF
GPIO13	36	V5TB
GPO14	96	A_MUTE
GPIO19	103	SCART2 VSYNC#
GPIO20	104	AVCM
GPIO21	105	AKIN1
ARF	109	AUDIO_ARF Gxyz_LOAD
ARS	110	AUDIO_ARS Gxyz_CLK
ALS	114	AUDIO_ALS Gxyz_DATA1
ALF	115	AUDIO_ALF Gxyz_DATA2

OFF-PAGE CONNECTION	
URST#	>>>URST# (2,3)
+12V	>>>+12V (4,6)
-12V	>>>-12V (4)
AVCC	>>>AVCC (2,4)
+P12V	>>>+P12V (4)
VCC	>>>VCC (2,3,5,6)
DV33	>>>DV33 (3)
V18_MD	<<<V18_MD (3)
RV33	<<<RV33 (2)
89M_3V3	>>>89M_3V3 (2)
V18	>>>V18 (2)
Power	

MediaTek (ShenZhen) Inc.



COMMON138M_HD65_AT5669	
INDEX / POWER / RESET	Rev
Checked: ZJ HAWK	1.0
Sheet	1 of 6



OFF-PAGE CONNECTION

DQ0\_15 >>> DQ0..15 (2)  
MA0..11 <<< MA0..11 (2)  
DQM0..11 <<< DQM0..11 (2)  
BA0..11 <<< BA0..11 (2)  
DCLK <<< DCLK (2)  
RAS# <<< RAS# (2)  
CAS# <<< CAS# (2)  
WE# <<< WE# (2)

DRAM I/F

SF\_CK <<< SF\_CK (2)  
SF\_CS <<< SF\_CS (2)  
SF\_DI <<< SF\_DI (2)  
SF\_DO <<< SF\_DO (2)

S-FLASH

STBY <<< STBY (2)  
TROPEN <<< TROPEN (2)  
TRCLOSE <<< TRCLOSE (2)  
TRIN <<< TRIN (2)  
TROUT <<< TROUT (2)

T- <<< T- (2)  
T+ <<< T+ (2)  
F- <<< F- (2)  
F+ <<< F+ (2)  
SL- <<< SL- (2)  
SL+ <<< SL+ (2)  
SP- <<< SP- (2)  
SP+ <<< SP+ (2)

FOSO <<< FOSO (2)  
FRSO <<< FRSO (2)  
FMSO <<< FMSO (2)  
DMSO <<< DMSO (2)  
VIP4 <<< VIP4 (2)

SERVO I/F

DV33 <<< DV33 (1,2,4,5,6)  
VCC <<< VCC (1,2,5,6)  
V18\_MD <<< V18\_MD (1)  
V33\_MD <<< V33\_MD (1)

Power

URST# <<< URST# (1,2)

Misc

MediaTek Confidential

MediaTek (ShenZhen) Inc.

COMMON138M HD65 AT5669

SDRAM / FLASH / MOTOR

Size B Document Number

Rev 1.0

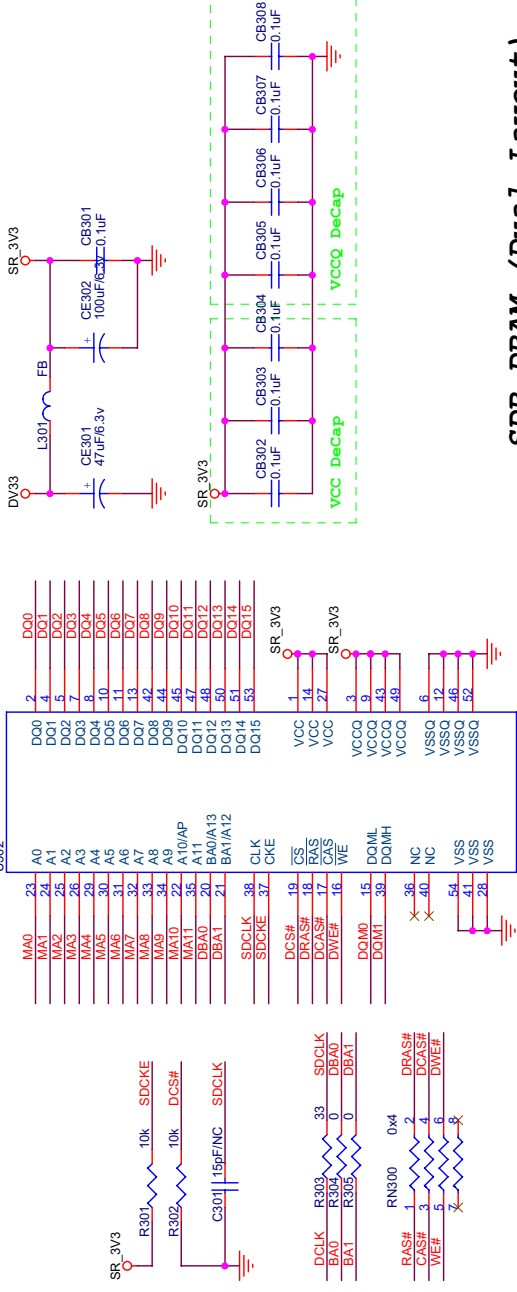
Drawn: WenYuan

Checked: XJ HAWK

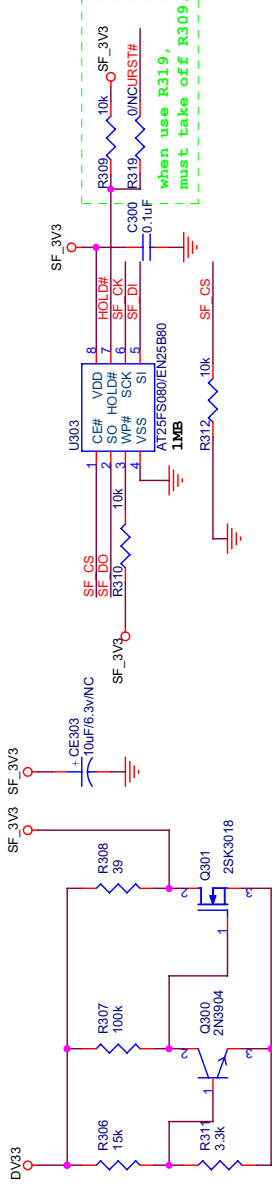
Date: Sunday, May 04, 2008

Sheet 3 of 6

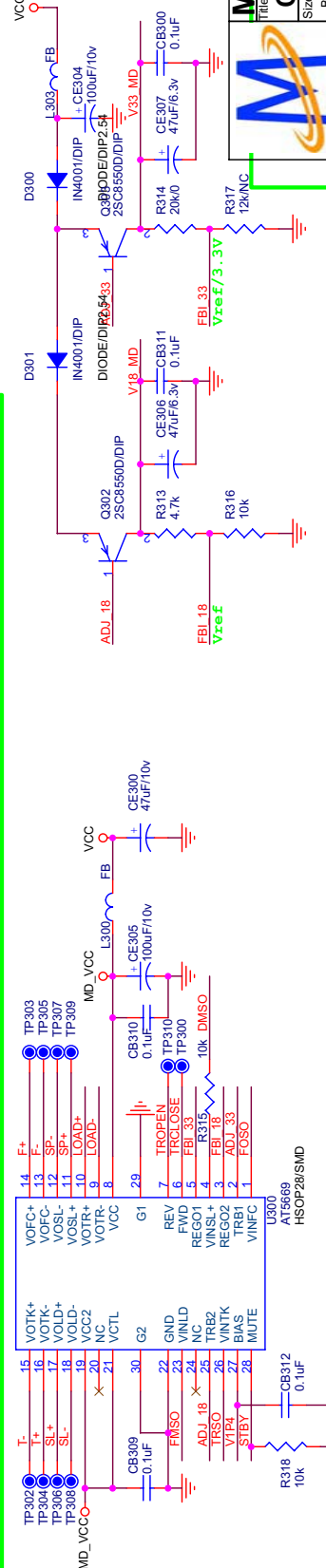
SDR\_DRAM (Dual Layout)

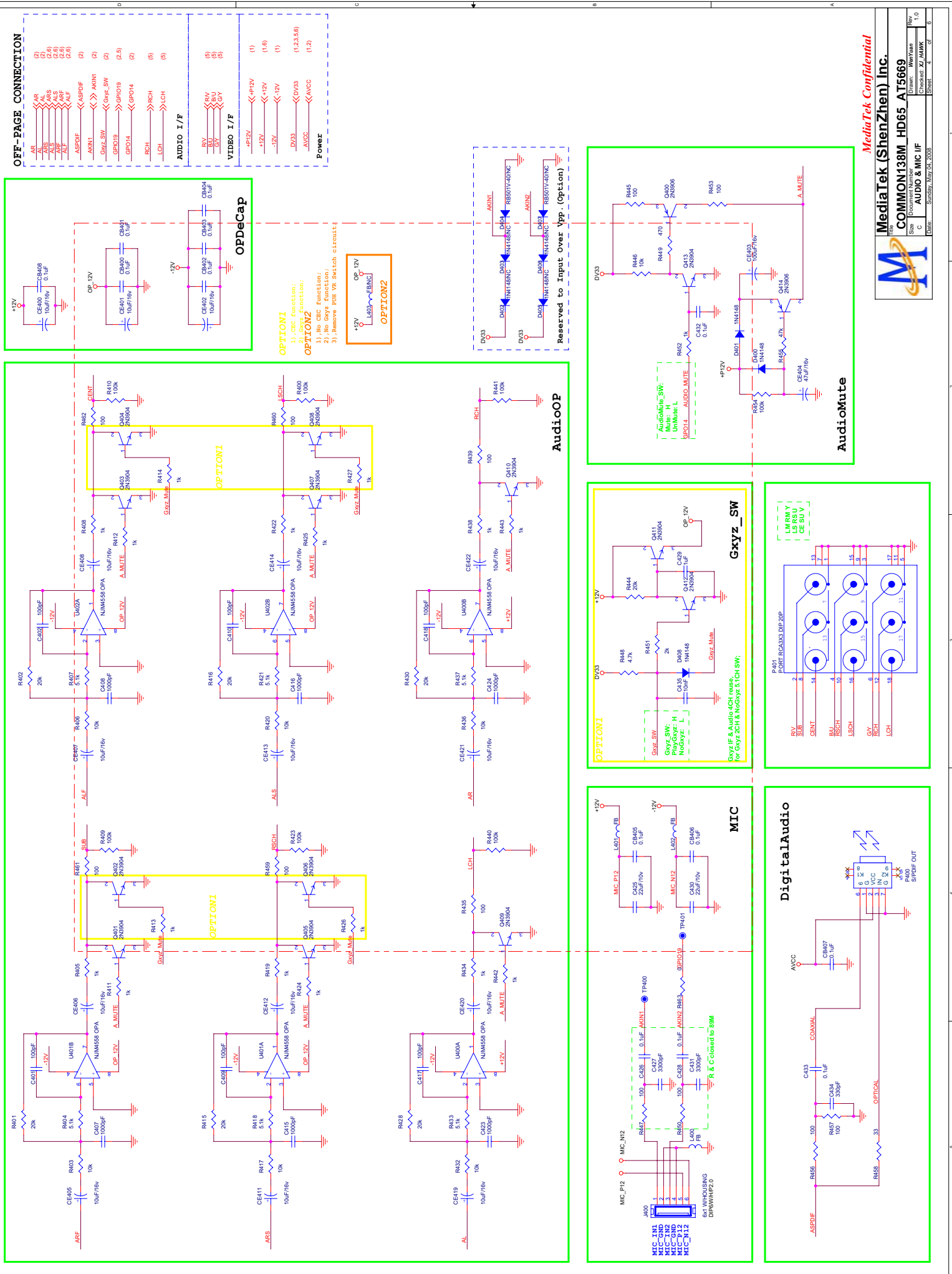


SerialFlash

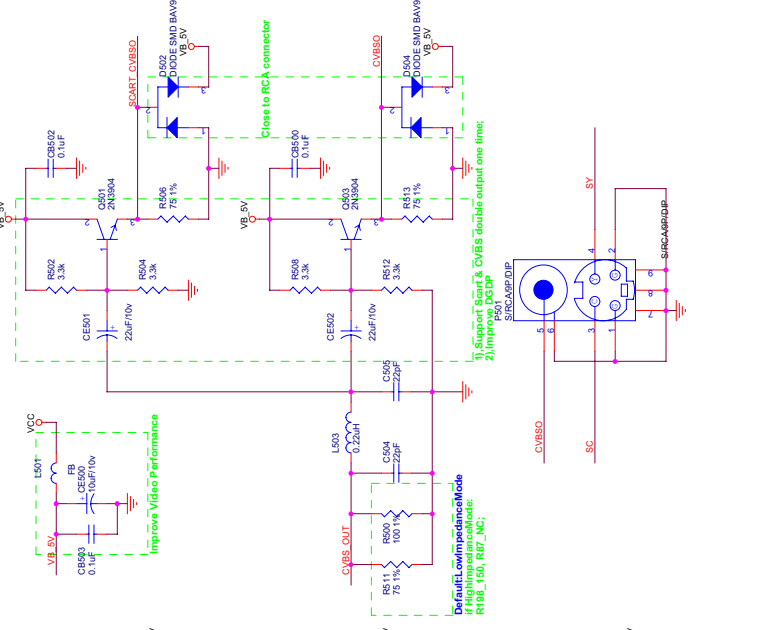
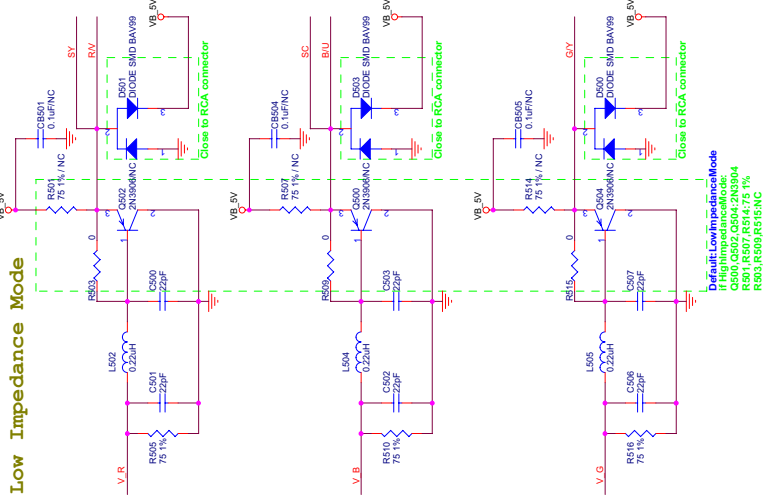


MotorDriver

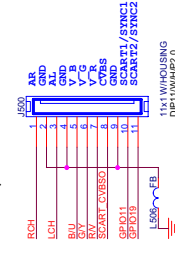




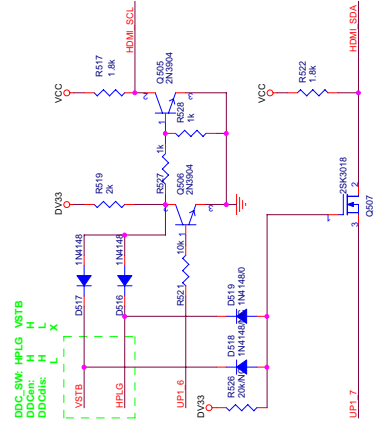
## Low Impedance Mode



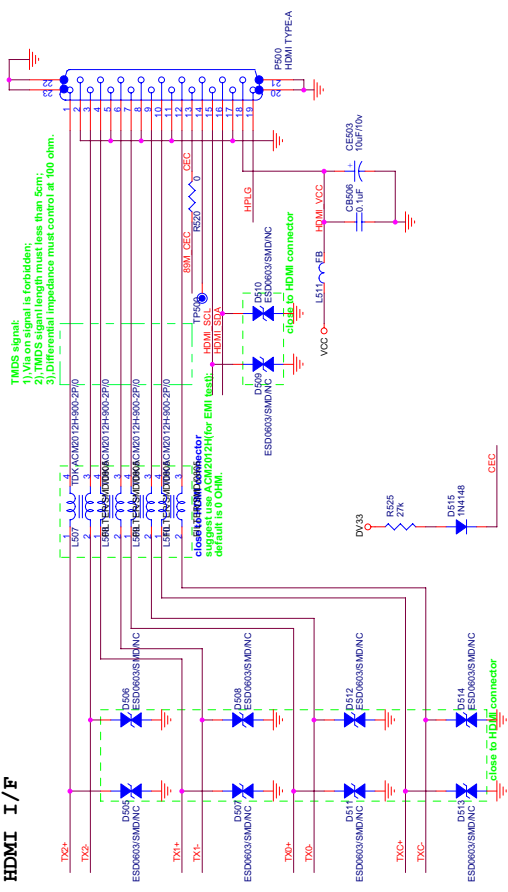
### SCART/VGA CONNECTOR



## DDC SW



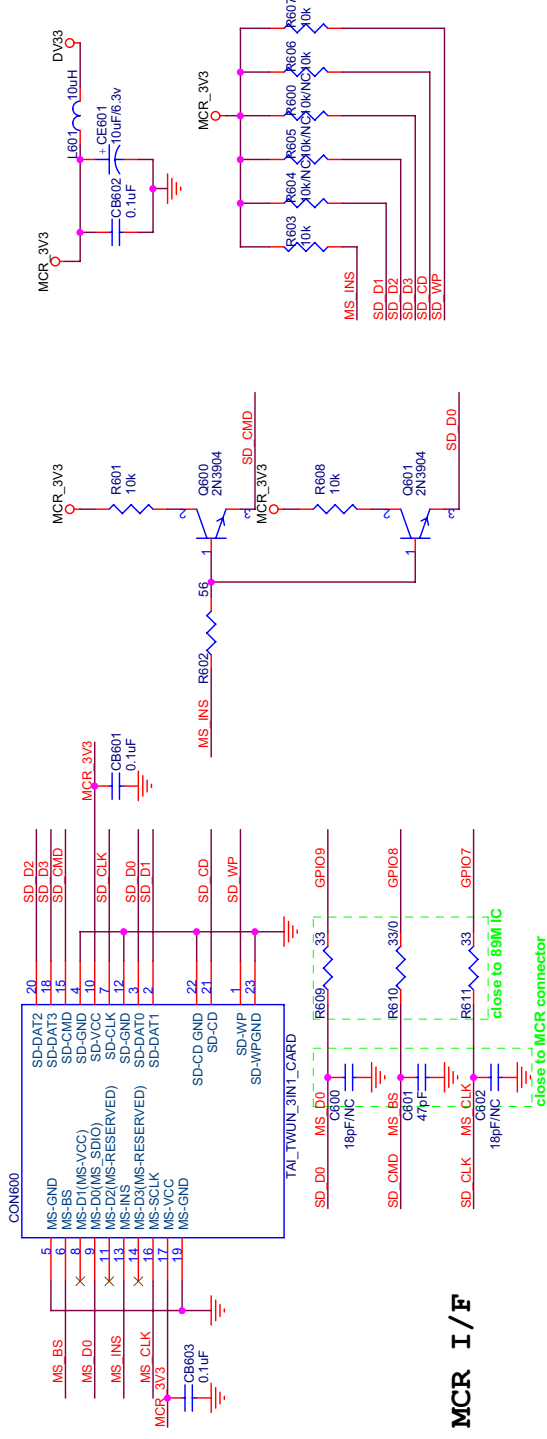
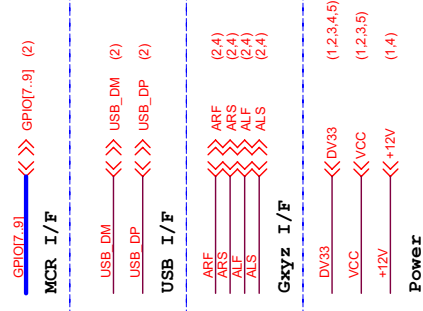
## HDMI I/F



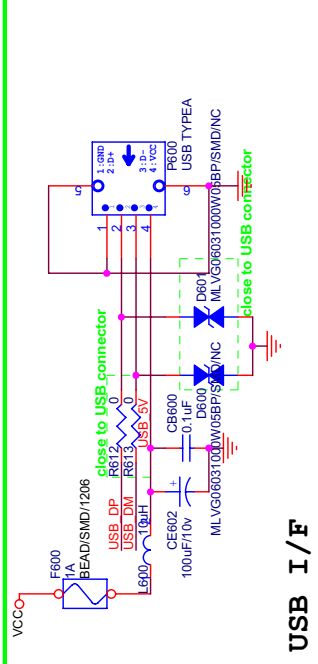
## OFF-PAGE CONNECTION

<b>VVIDEO I/F</b>	RCH LCH	<<VBS_OUT< <<VBS_IN< <<V_G< <<V_B< <<V_R< <<V_Y< <<R_V< <<B_U< <<G_U<	(2) (2) (2) (2) (4) (4) (4) (4) (4)
<b>AUDIO I/F</b>	GPH011 GPH019	<<GPH011< <<GPH019<	(2) (2-4)
<b>SCART VIDEO I/F</b>	TXC+ TXC- TXP+ TXP- TX+ TX- TX2+ TX2- HPLG UPT_86_71 BMAL_CEC VSTB	<<TXC+> <<TXC-> <<TXP+> <<TXP-> <<TX+> <<TX-> <<TX2+> <<TX2-> <<HPLG> <u>&lt;&lt;UPT_86_71&gt;</u> <<BMAL_CEC> <<VSTB>	(2) (2) (2) (2) (2) (2) (2) (2) (2) (2) (2) (2)
<b>TWDS I/F</b>	VCC DVDD VDD3	<<VCC> <<DVDD> <<VDD3>	(123,6) (123,6) (123,6)

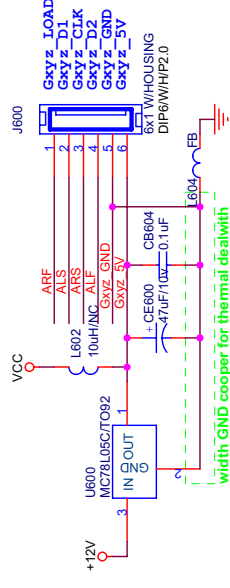
## OFF-PAGE CONNECTION



## MCR I/F



## USB I/F

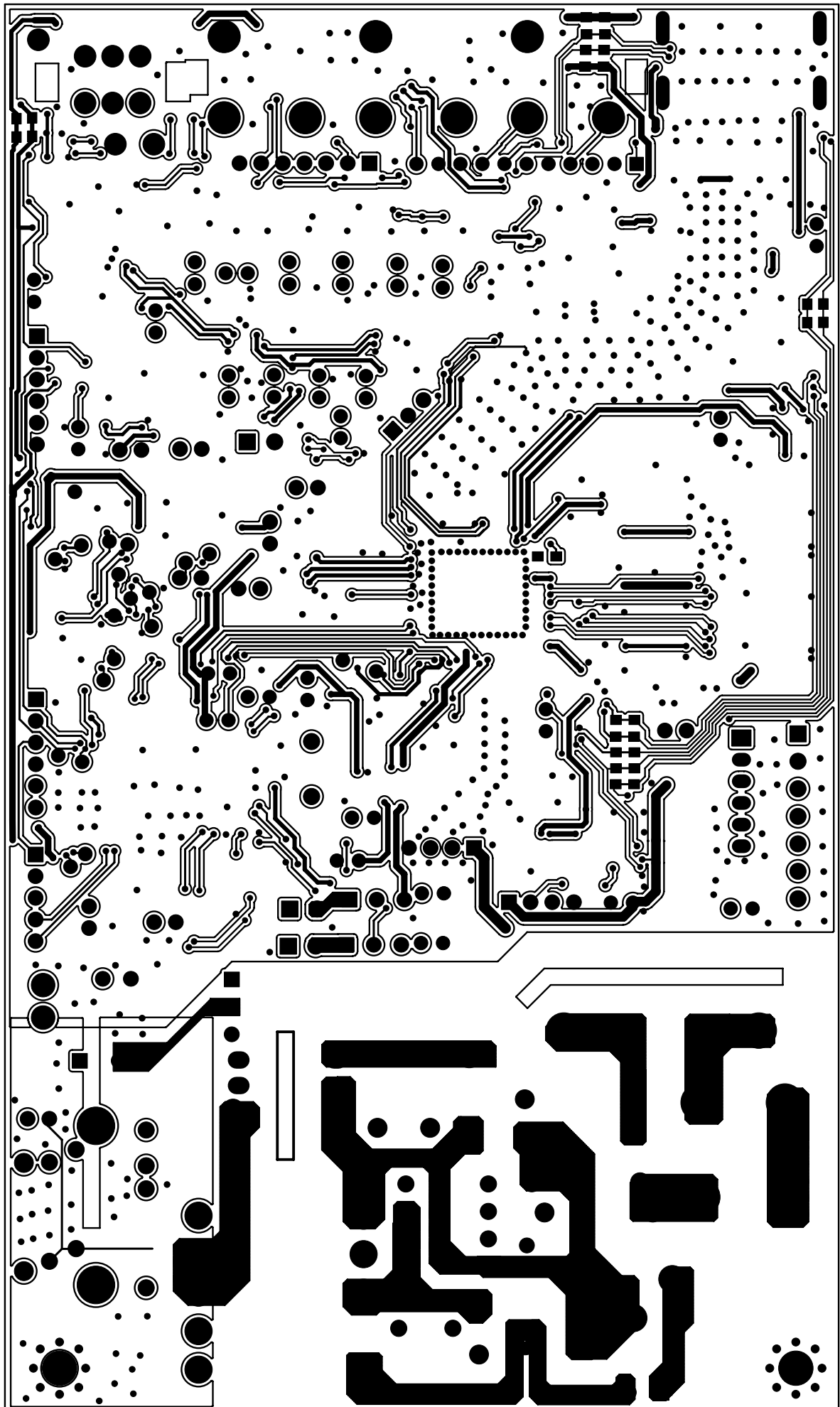


**Gxyz I/F**

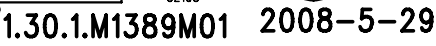


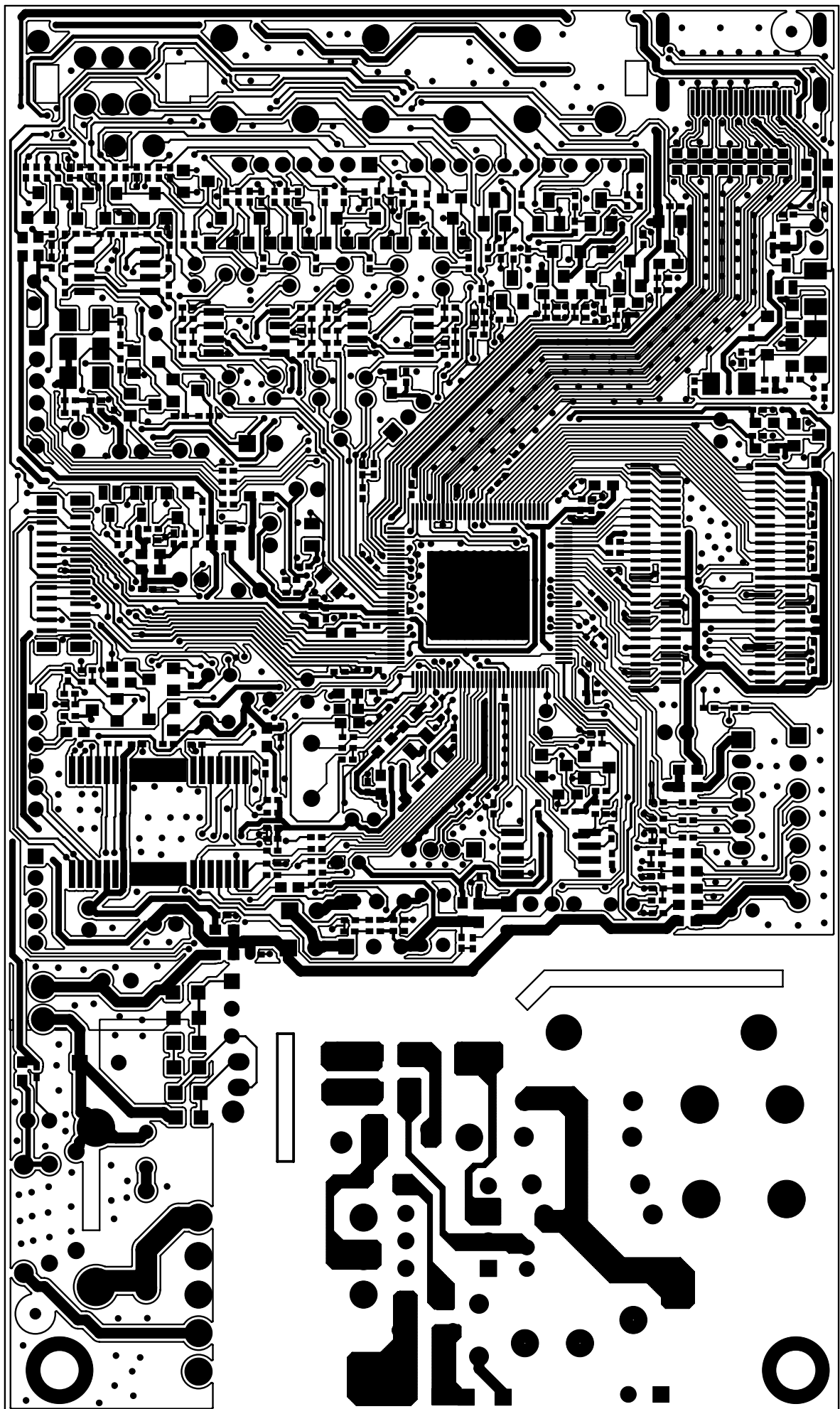
**MediaTek (ShenZhen) Inc.**

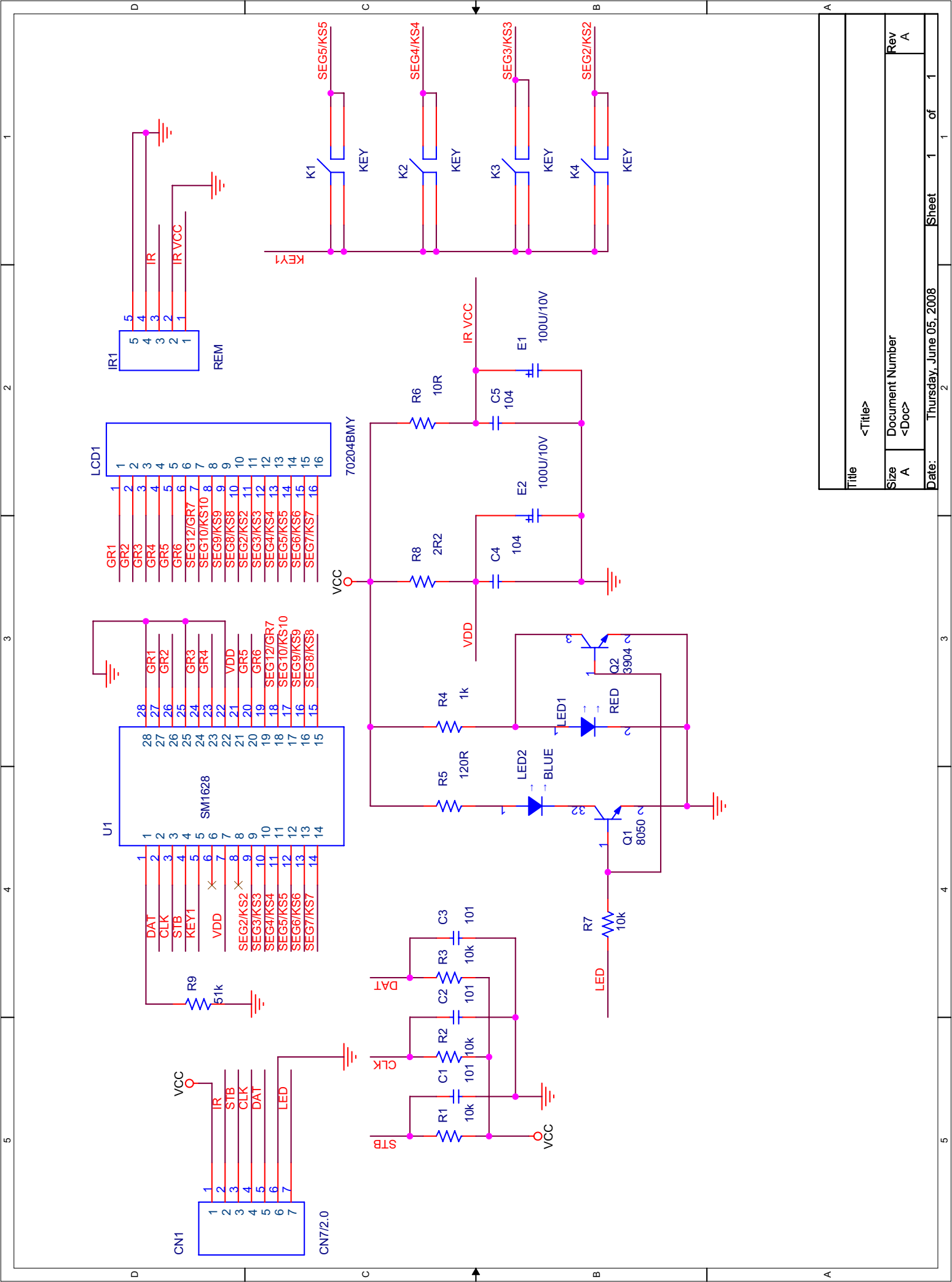
COMMON138M HD65 AT5669		Drawn: Wen Yuan	Rev 1.0
Size B	Document Number MCR & USB & Gxyz I/F	Checked: XJ HAWK	
Date: Sunday, May 04, 2008	Sheet 6	of 6	



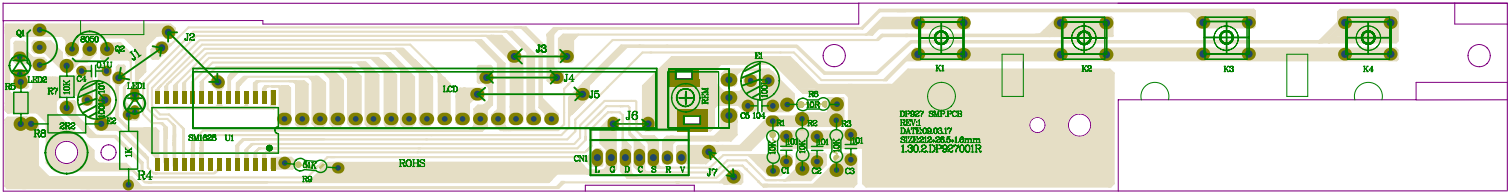


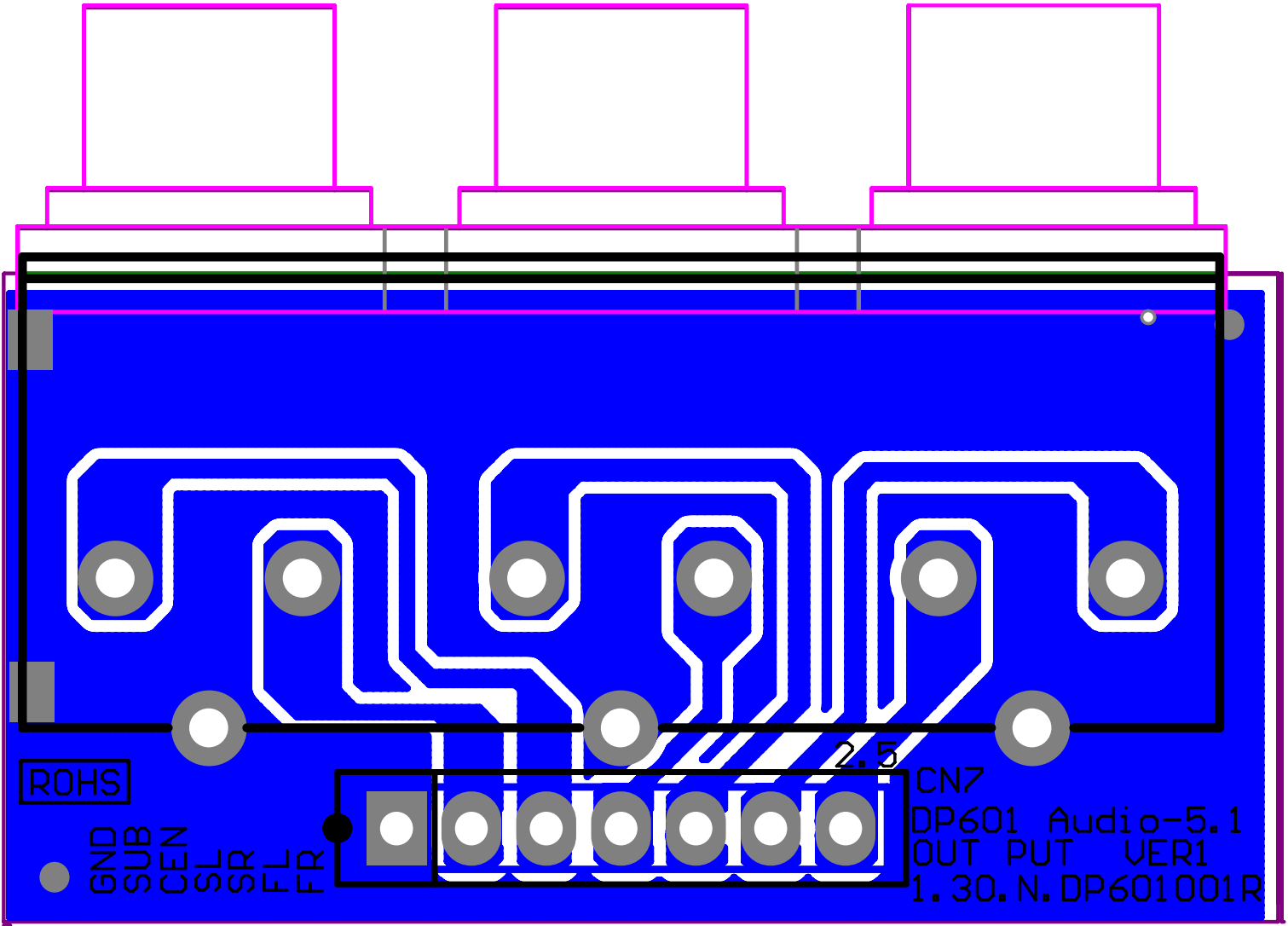


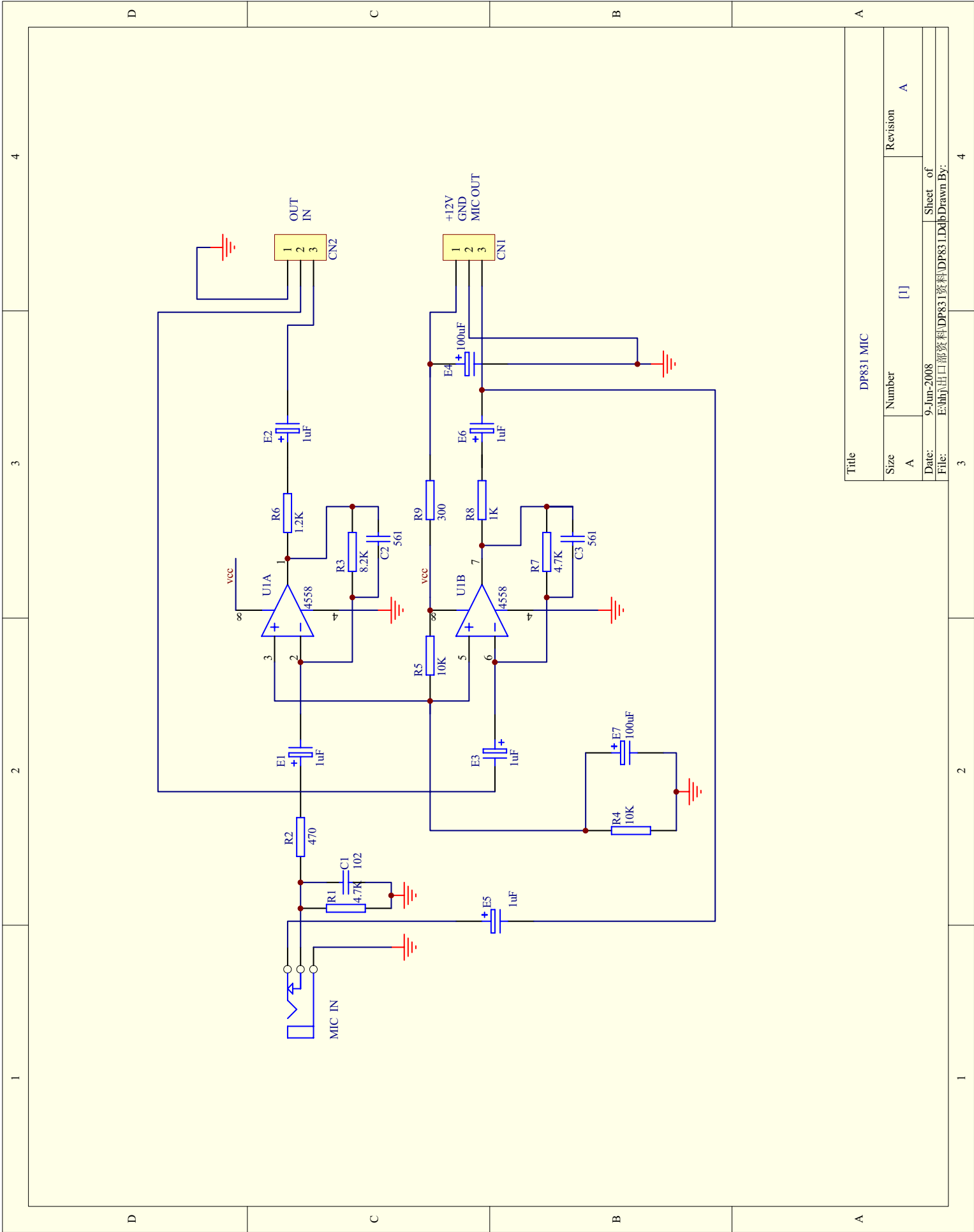




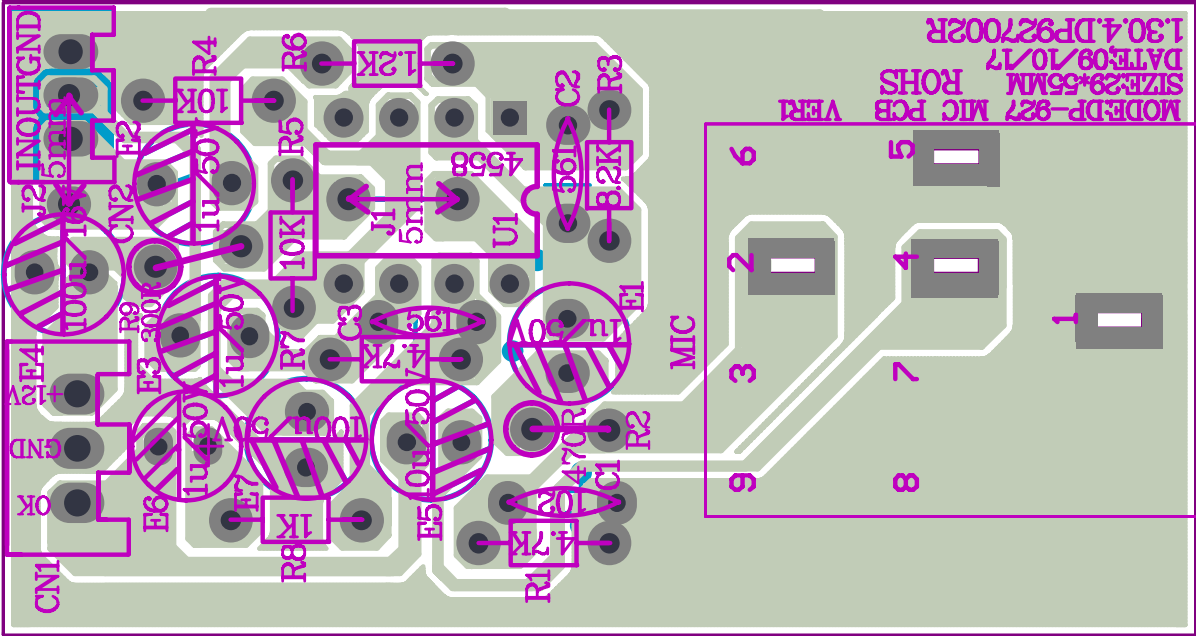
Title		<Title>	
Size	A	Document Number	<Doc>
Rev	A		
Date:	Thursday, June 05, 2008	Sheet	1 of 1



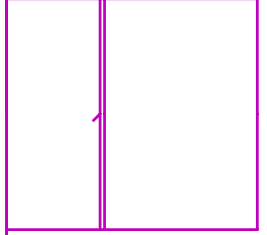


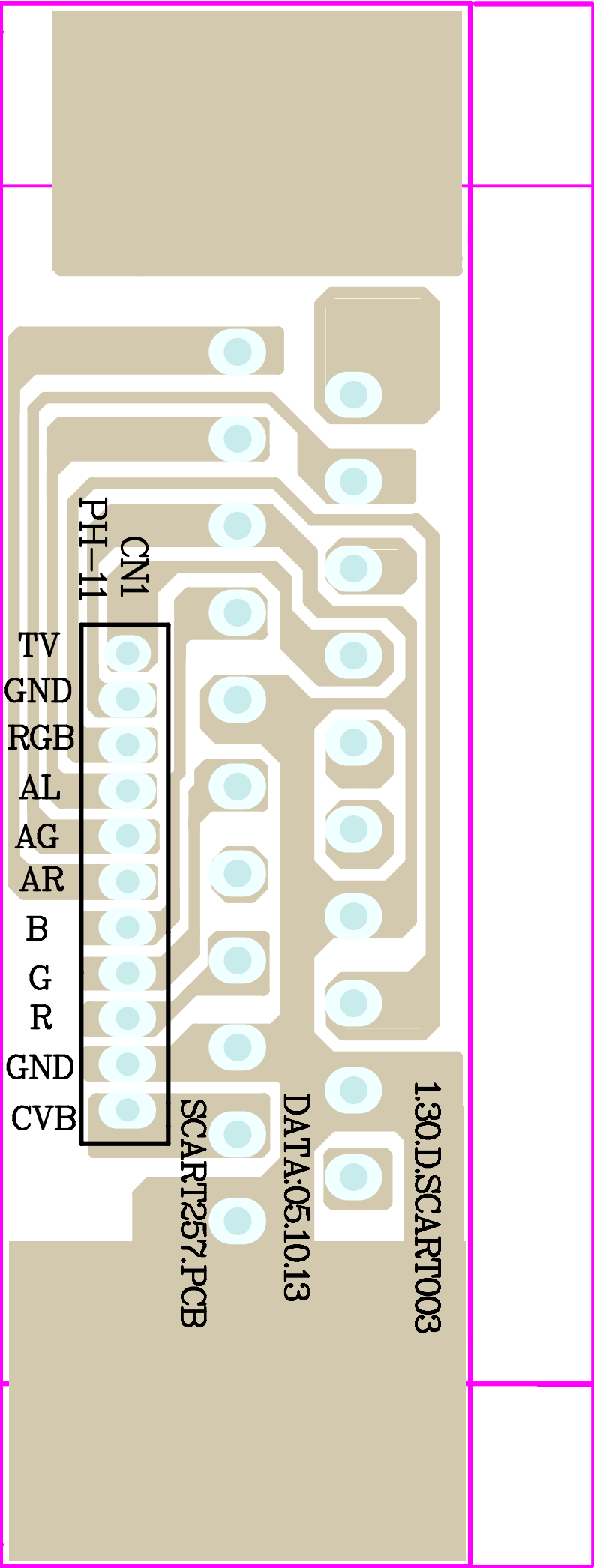


Title			DP831 MIC	
Size	Number	Revision		A
A	[1]			
Date:	9-Jun-2008	Sheet of		
File:	E:\hh\出口部资料\DP831.Ddb	Drawn By:		

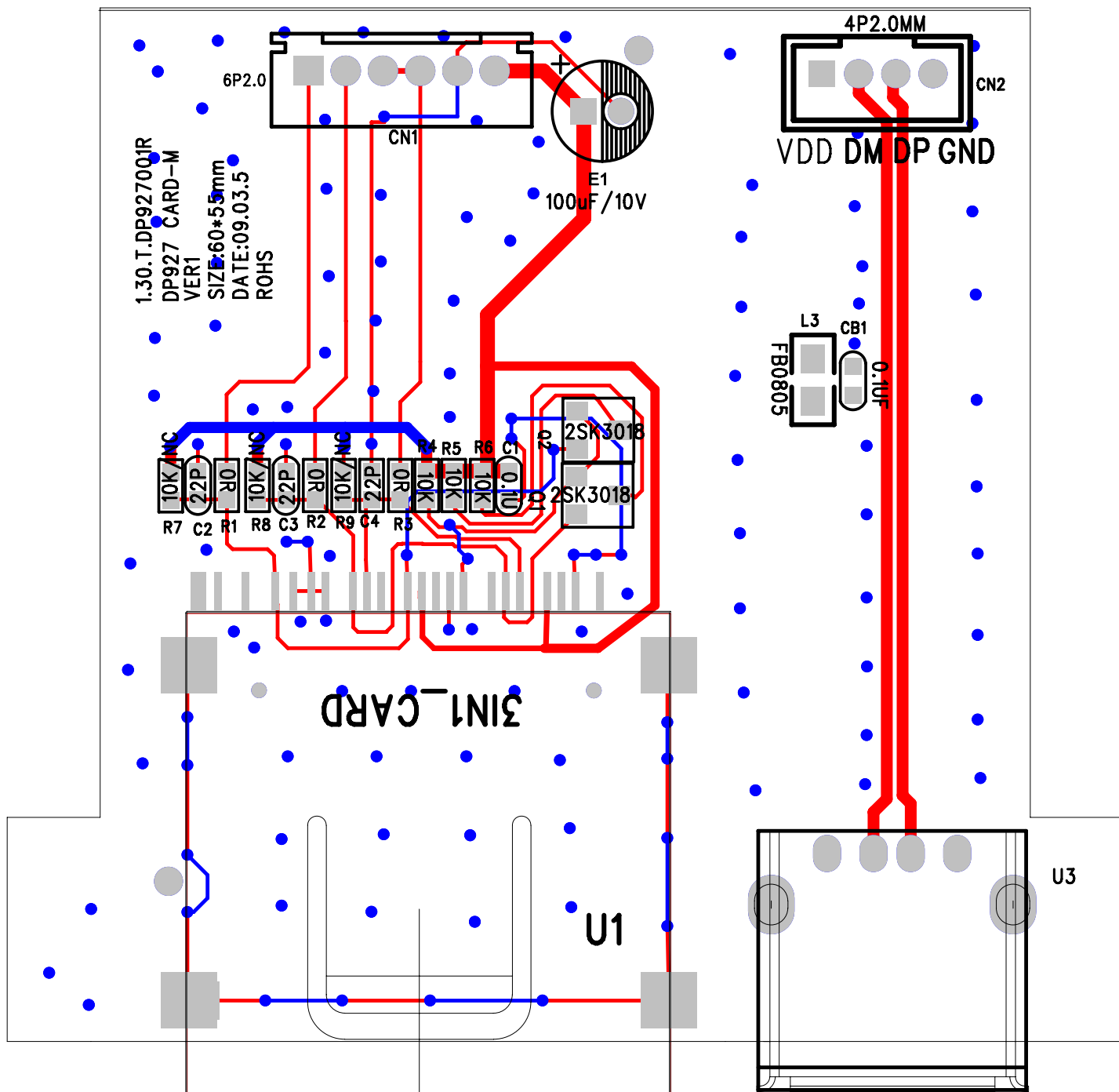


MODE:DP-827 MIC PCB VER1  
DATE:09/10/17  
SIZE:29\*55MM  
ROHS  
1.30.4.DP927002R









# 10. Wiring Diagram:

