

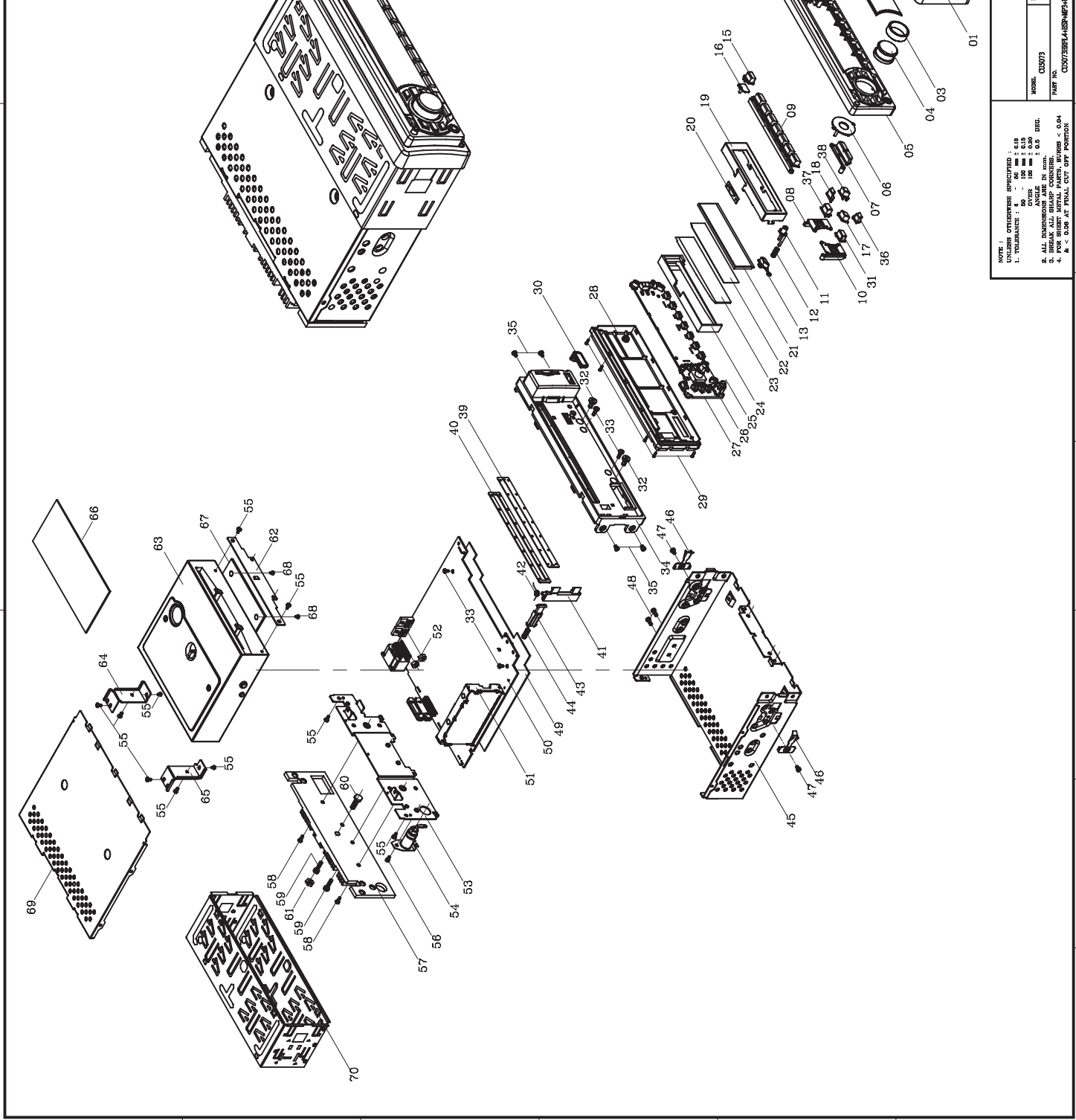


# AKAI

**CD/MP3/WMA/  
USB/MMC/SD-RECIVER**

Model:  
ACR-220MMU

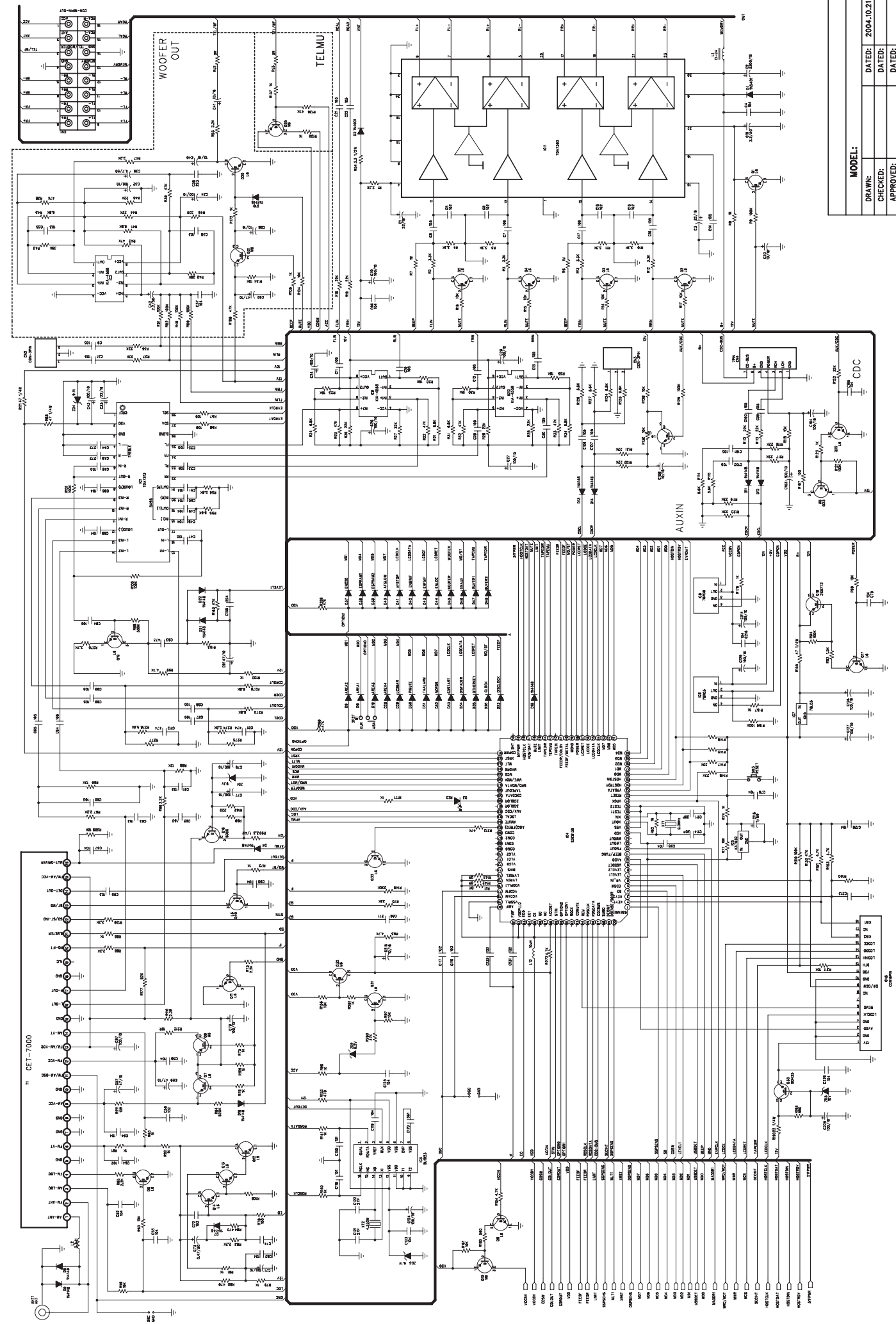
## SERVICE MANUAL



70	INTERMOUNT-20-20	1
69	INTERMOUNT-20-20	1
68	INTERMOUNT-20-20	1
67	INTERMOUNT-20-20	1
66	INTERMOUNT-20-20	1
65	INTERMOUNT-20-20	1
64	INTERMOUNT-20-20	1
63	INTERMOUNT-20-20	1
62	INTERMOUNT-20-20	1
61	INTERMOUNT-20-20	1
60	INTERMOUNT-20-20	1
59	INTERMOUNT-20-20	1
58	INTERMOUNT-20-20	1
57	INTERMOUNT-20-20	1
56	INTERMOUNT-20-20	1
55	INTERMOUNT-20-20	1
54	INTERMOUNT-20-20	1
53	INTERMOUNT-20-20	1
52	INTERMOUNT-20-20	1
51	INTERMOUNT-20-20	1
50	INTERMOUNT-20-20	1
49	INTERMOUNT-20-20	1
48	INTERMOUNT-20-20	1
47	INTERMOUNT-20-20	1
46	INTERMOUNT-20-20	1
45	INTERMOUNT-20-20	1
44	INTERMOUNT-20-20	1
43	INTERMOUNT-20-20	1
42	INTERMOUNT-20-20	1
41	INTERMOUNT-20-20	1
40	INTERMOUNT-20-20	1
39	INTERMOUNT-20-20	1
38	INTERMOUNT-20-20	1
37	INTERMOUNT-20-20	1
36	INTERMOUNT-20-20	1
35	INTERMOUNT-20-20	1
34	INTERMOUNT-20-20	1
33	INTERMOUNT-20-20	1
32	INTERMOUNT-20-20	1
31	INTERMOUNT-20-20	1
30	INTERMOUNT-20-20	1
29	INTERMOUNT-20-20	1
28	INTERMOUNT-20-20	1
27	INTERMOUNT-20-20	1
26	INTERMOUNT-20-20	1
25	INTERMOUNT-20-20	1
24	INTERMOUNT-20-20	1
23	INTERMOUNT-20-20	1
22	INTERMOUNT-20-20	1
21	INTERMOUNT-20-20	1
20	INTERMOUNT-20-20	1
19	INTERMOUNT-20-20	1
18	INTERMOUNT-20-20	1
17	INTERMOUNT-20-20	1
16	INTERMOUNT-20-20	1
15	INTERMOUNT-20-20	1
14	INTERMOUNT-20-20	1
13	INTERMOUNT-20-20	1
12	INTERMOUNT-20-20	1
11	INTERMOUNT-20-20	1
10	INTERMOUNT-20-20	1
09	INTERMOUNT-20-20	1
08	INTERMOUNT-20-20	1
07	INTERMOUNT-20-20	1
06	INTERMOUNT-20-20	1
05	INTERMOUNT-20-20	1
04	INTERMOUNT-20-20	1
03	INTERMOUNT-20-20	1
02	INTERMOUNT-20-20	1
01	INTERMOUNT-20-20	1

DATE	2007.08.17	DATE	2007.08.17	DATE	2007.08.17
REV.	A	REV.	A	REV.	A
FILE NAME	C:\WORK\A888\A888-01.DWG	FILE NAME	C:\WORK\A888\A888-01.DWG	FILE NAME	C:\WORK\A888\A888-01.DWG
SCALE	NONE	SCALE	NONE	SCALE	NONE
SHEET	1	SHEET	1	SHEET	1
OF	1	OF	1	OF	1
APP. BY		APP. BY		APP. BY	
CHK. BY		CHK. BY		CHK. BY	
DATE		DATE		DATE	

UNLESS OTHERWISE SPECIFIED:	
1. TOLERANCE:	± 0.10
2. DIMENSIONS:	IN UNITS
3. BREAK ALL SHARP CORNERS:	0.04
4. ALL DIMENSIONS:	UNLESS OTHERWISE SPECIFIED
5. BREAK ALL SHARP CORNERS:	0.04
6. ALL DIMENSIONS:	UNLESS OTHERWISE SPECIFIED
7. BREAK ALL SHARP CORNERS:	0.04
8. ALL DIMENSIONS:	UNLESS OTHERWISE SPECIFIED
9. BREAK ALL SHARP CORNERS:	0.04
10. ALL DIMENSIONS:	UNLESS OTHERWISE SPECIFIED
11. BREAK ALL SHARP CORNERS:	0.04
12. ALL DIMENSIONS:	UNLESS OTHERWISE SPECIFIED
13. BREAK ALL SHARP CORNERS:	0.04
14. ALL DIMENSIONS:	UNLESS OTHERWISE SPECIFIED
15. BREAK ALL SHARP CORNERS:	0.04
16. ALL DIMENSIONS:	UNLESS OTHERWISE SPECIFIED
17. BREAK ALL SHARP CORNERS:	0.04
18. ALL DIMENSIONS:	UNLESS OTHERWISE SPECIFIED
19. BREAK ALL SHARP CORNERS:	0.04
20. ALL DIMENSIONS:	UNLESS OTHERWISE SPECIFIED
21. BREAK ALL SHARP CORNERS:	0.04
22. ALL DIMENSIONS:	UNLESS OTHERWISE SPECIFIED
23. BREAK ALL SHARP CORNERS:	0.04
24. ALL DIMENSIONS:	UNLESS OTHERWISE SPECIFIED
25. BREAK ALL SHARP CORNERS:	0.04
26. ALL DIMENSIONS:	UNLESS OTHERWISE SPECIFIED
27. BREAK ALL SHARP CORNERS:	0.04
28. ALL DIMENSIONS:	UNLESS OTHERWISE SPECIFIED
29. BREAK ALL SHARP CORNERS:	0.04
30. ALL DIMENSIONS:	UNLESS OTHERWISE SPECIFIED
31. BREAK ALL SHARP CORNERS:	0.04
32. ALL DIMENSIONS:	UNLESS OTHERWISE SPECIFIED
33. BREAK ALL SHARP CORNERS:	0.04
34. ALL DIMENSIONS:	UNLESS OTHERWISE SPECIFIED
35. BREAK ALL SHARP CORNERS:	0.04
36. ALL DIMENSIONS:	UNLESS OTHERWISE SPECIFIED
37. BREAK ALL SHARP CORNERS:	0.04
38. ALL DIMENSIONS:	UNLESS OTHERWISE SPECIFIED
39. BREAK ALL SHARP CORNERS:	0.04
40. ALL DIMENSIONS:	UNLESS OTHERWISE SPECIFIED
41. BREAK ALL SHARP CORNERS:	0.04
42. ALL DIMENSIONS:	UNLESS OTHERWISE SPECIFIED
43. BREAK ALL SHARP CORNERS:	0.04
44. ALL DIMENSIONS:	UNLESS OTHERWISE SPECIFIED
45. BREAK ALL SHARP CORNERS:	0.04
46. ALL DIMENSIONS:	UNLESS OTHERWISE SPECIFIED
47. BREAK ALL SHARP CORNERS:	0.04
48. ALL DIMENSIONS:	UNLESS OTHERWISE SPECIFIED
49. BREAK ALL SHARP CORNERS:	0.04
50. ALL DIMENSIONS:	UNLESS OTHERWISE SPECIFIED
51. BREAK ALL SHARP CORNERS:	0.04
52. ALL DIMENSIONS:	UNLESS OTHERWISE SPECIFIED
53. BREAK ALL SHARP CORNERS:	0.04
54. ALL DIMENSIONS:	UNLESS OTHERWISE SPECIFIED
55. BREAK ALL SHARP CORNERS:	0.04
56. ALL DIMENSIONS:	UNLESS OTHERWISE SPECIFIED
57. BREAK ALL SHARP CORNERS:	0.04
58. ALL DIMENSIONS:	UNLESS OTHERWISE SPECIFIED
59. BREAK ALL SHARP CORNERS:	0.04
60. ALL DIMENSIONS:	UNLESS OTHERWISE SPECIFIED
61. BREAK ALL SHARP CORNERS:	0.04
62. ALL DIMENSIONS:	UNLESS OTHERWISE SPECIFIED
63. BREAK ALL SHARP CORNERS:	0.04
64. ALL DIMENSIONS:	UNLESS OTHERWISE SPECIFIED
65. BREAK ALL SHARP CORNERS:	0.04
66. ALL DIMENSIONS:	UNLESS OTHERWISE SPECIFIED
67. BREAK ALL SHARP CORNERS:	0.04
68. ALL DIMENSIONS:	UNLESS OTHERWISE SPECIFIED
69. BREAK ALL SHARP CORNERS:	0.04
70. ALL DIMENSIONS:	UNLESS OTHERWISE SPECIFIED



MODEL:		DATED:	2004.10.21
DRAWN:		DATED:	
CHECKED:		APPROVED:	



Part Code	Name/Description	Unit	Qty	Location
CC0R10215540-00-00	CHIP CAP 0603 102P NPO 50V +/-5%	PCS	6.00	C54.56.117.131.132.194
CC0R10310540-00-00	CHIP CAP 0603 103P 50V X7R +/-10%	PCS	10.00	C72.116.181.185.211.209.203.60.61.217
CC0R10410540-00-00	CHIP CAP 0603 104P 25V X7R +/-10%	PCS	54.00	C94.58.67.53.82.80.136.128.76.55.184.189.190.177.206.178.195
CC0R10510540-00-00	CHIP CAP 0603 1UF X7R 16V +/-10%	PCS	26.00	C10-13.84.47.30.23.28.25.64.65.87-90.46.6.7.16.17.21.22.14(C
CC0R10650110-00-00	TANTALUM CAP 1206 (SIEZE A) 10UF 10V +/-20%	PCS	1.00	RJ1
CC0R12010540-00-00	CHIP CAP 0603 12P NPO 50V +/-5%	PCS	1.00	C77
CC0R12210540-00-00	CHIP CAP 0603 122P X7R 50V +/-10%	PCS	3.00	C172.173.174
CC0R15210540-00-00	CHIP CAP 0603 152P 50V X7R +/-10%	PCS	4.00	C151.150.199.C208
CC0R15310540-00-00	CHIP CAP 0603 153P 50V X7R +/-10%	PCS	3.00	C63.62.207
CC0R22015540-00-00	CHIP CAP 0603 22P NPO 50V +/-5%	PCS	2.00	C212.113
CC0R22210540-00-00	CHIP CAP 0603 222P 50V X7R +/-10%	PCS	1.00	C187
CC0R22310540-00-00	CHIP CAP 0603 223P X7R 50V +/-10%	PCS	0.00	(C36.C35.C38 WOOF0 )
CC0R22410540-00-00	CHIP CAP 0603 224P 50V X7R +/-10%	PCS	1.00	C138
CC0R27210540-00-00	CHIP CAP 0603 272P X7R 50V +/-10%	PCS	2.00	C44.45
CC0R30010540-00-00	CHIP CAP 0603 30P NPO 50V +/-5%	PCS	3.00	C114.170.171
CC0R30810540-00-00	CHIP CAP 0603 3P NPO 50V +/-5%	PCS	1.00	C201
CC0R33310540-00-00	CHIP CAP 0603 333P 25V X7R +/-10%	PCS	2.00	C191.149
CC0R39010540-00-00	CHIP CAP 0603 39P NPO 50V +/-5%	PCS	1.00	C111
CC0R39115540-00-00	CHIP CAP 0603 391P NPO 50V +/-5%	PCS	1.00	C188
CC0R47110540-00-00	CHIP CAP 0603 471P NPO 50V +/-5%	PCS	4.00	C5.8.15.18
CC0R47310540-00-00	CHIP CAP 0603 473P X7R 25V +/-10%	PCS	1.00	C83
CC0R47410540-00-00	CHIP CAP 0603 474P 25V X7R +/-10%	PCS	4.00	C68.112.81.148
CC0R50810540-00-00	CHIP CAP 0603 5P NPO 50V +/-5%	PCS	1.00	C198
CC0R56110540-00-00	CHIP CAP 0603 561P X7R 50V +/-10%	PCS	2.00	C95.109
CC0R68210540-00-00	CHIP CAP 0603 682P X7R 50V +/-10%	PCS	1.00	C200
CC0R68310540-00-00	CHIP CAP 0603 683P 25V X7R +/-10%	PCS	1.00	C183

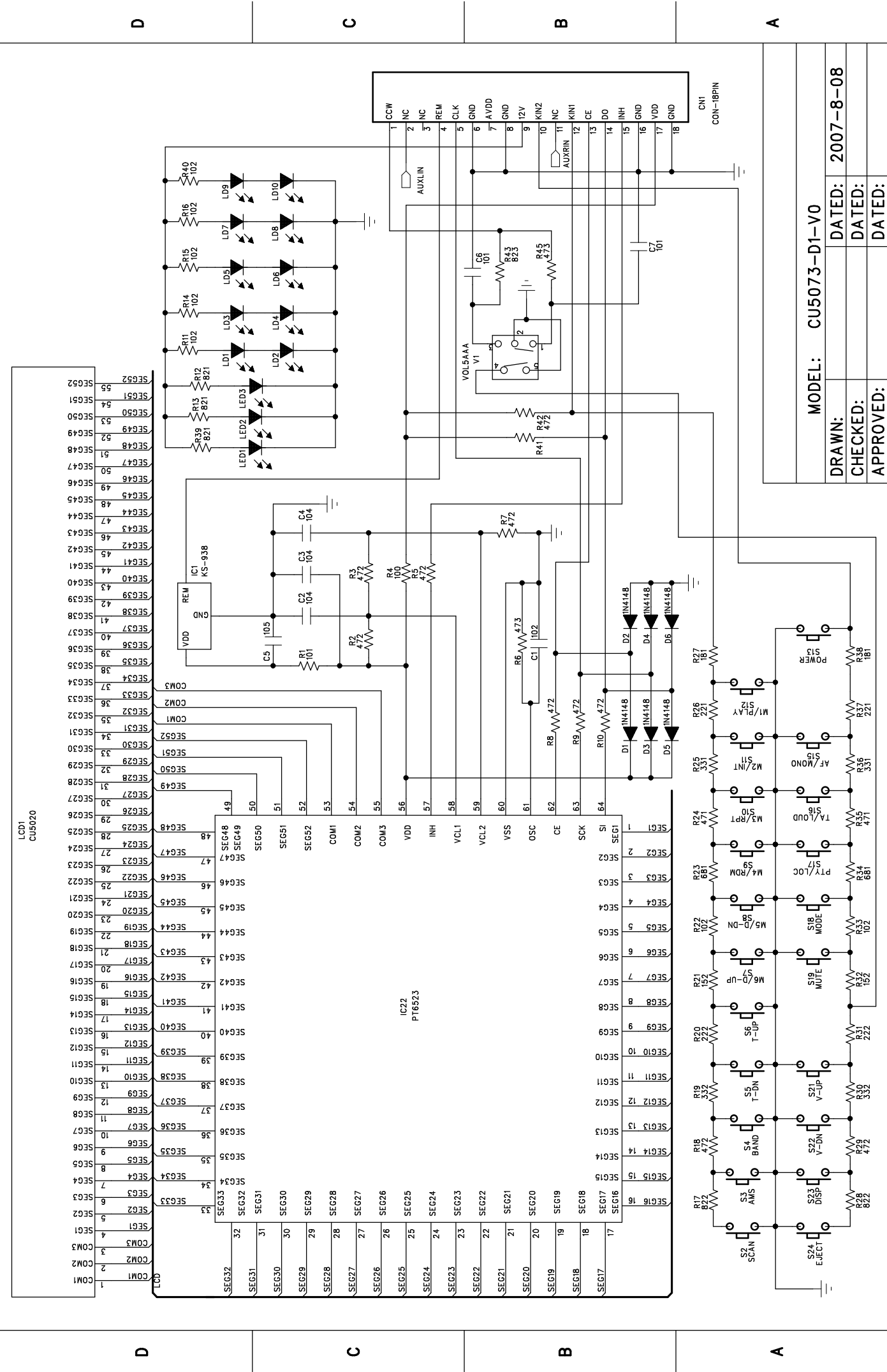
Part Code	Name/Description	Unit	Qty	Location
CC0R82115540-00-00	CHIP CAP 0603 821P NPO 50V +/-5%	PCS	1.00	C145
CF0R11200301-01-00	CRYSTAL 12.0MHZ/20PF/30PPM 2LEG 49S	PCS	1.00	XT4
CF0R11693401-00-01	X-TAL 16.9344MHZ 2LEG (FG )	PCS	1.00	XT3
CF0R19000300-00-00	CRYSTAL 49-S 9.0MHZ 2LEG 20PF	PCS	1.00	XT1
CH0R01248001-01-00	CHIP INDUCTOR COIL (0805) 2.4UH +/-10%	PCS	1.00	L14
CH0R01338001-00-00	CHIP INDUCTOR COLL 321611(1206) 3.3UH +/-10%	PCS	1.00	L2
CH0R04310000-00-00	CHIP FERRITE BEED 1206 FB-310	PCS	1.00	L11
CH0R09100000-00-00	CHIP INDUCTANCE 1206 10UH+/-10%	PCS	8.00	L3-7.9.10.13
CH0R09100000-01-00	CHIP INDUCTANCE 0805 10UH+/-10%	PCS	1.00	L12
CH0R09220000-00-00	CHIP INDUCTANCE 1206 22UH +/-10%	PCS	1.00	L8
CR0R00050410-00-00	CHIP RESISTOR 0603 0 OHM 1/10W 50V +/-5%	PCS	6.00	R142.143.293.294(R53.RJ2 WOOF0 ;R313.314
CR0R00051210-00-00	CHIP RESISTOR 0805 0 1/8W 100V +/-5%	PCS	2.00	(0 CU5010-U2"LMN 2PCS)
CR0R00051510-00-00	CHIP RESISTOR 1206 0 OHM 1/4W 200V +/-5%	PCS	2.00	(D13.14 AUX0 )
CR0R10050410-00-00	CHIP RESISTOR 0603 10 OHM 1/10W 50V +/-5%	PCS	3.00	R212.211.260
CR0R10051000-00-00	RESISTOR 10 OHM 1/4W +/-5%	PCS	1.00	R155
CR0R10150410-00-00	CHIP RESISTOR 0603 100 OHM 1/10W 50V +/-5%	PCS	7.00	R78.57.58.202.195.201.218
CR0R10151000-00-00	RESISTOR 100 OHM 1/4W +/-5%	PCS	2.00	R88.111
CR0R10250410-00-00	CHIP RESISTOR 0603 1K OHM 1/10W 50V +/-5%	PCS	37.00	R61.82.63.75.109.76.86.72.102.292.7 4.234.235.281.191.192.180
CR0R10350410-00-00	CHIP RESISTOR 0603 10K OHM 1/10W 50V +/-5%	PCS	27.00	R60.309.230.258.245.246.301.161.31 1.77.14-17.289.156.95.286.
CR0R10450410-00-00	CHIP RESISTOR 0603 100K OHM 1/10W 50V +/-5%	PCS	13.00	R271.310.9.100.101.232.233.94.159.2 55.134.71.253(R49.50.51.5
CR0R10550410-00-00	CHIP RESISTOR 0603 1M OHM 1/10W 50V +/-5%	PCS	7.00	R228.62.8.7.6.236.279
CR0R12250410-00-00	CHIP RESISTOR 0603 1K2 OHM 1/10W 50V +/-5%	PCS	4.00	R240.242.244.237
CR0R12350410-00-00	CHIP RESISTOR 0603 12K OHM 1/10W 50V +/-5%	PCS	2.00	R68.69
CR0R12450410-00-00	CHIP RESISTOR 0603 120K OHM 1/10W 50V +/-5%	PCS	2.00	R250.R254
CR0R15250410-00-00	CHIP RESISTOR 0603 1K5 OHM 1/10W 50V +/-5%	PCS	1.00	R92
CR0R15350410-00-00	CHIP RESISTOR 0603 15K OHM 1/10W 50V +/-5%	PCS	6.00	R197.198.166.R126.R127.R249(R126. 127

Part Code	Name/Description	Unit	Qty	Location
CR0R18350410-00-00	CHIP RESISTOR 0603 18K OHM 1/10W 50V +/-5%	PCS	5.00	R30.25.35.291.20
CR0R20350410-00-00	CHIP RESISTOR 0603 20K OHM 1/10W 50V +/-5%	PCS	1.00	R312
CR0R22050410-00-00	CHIP RESISTOR 0603 22 OHM 1/10W 50V +/-5%	PCS	15.00	R203-206.196.217.219.220-227
CR0R22051000-00-00	RESISTOR 22 OHM 1/4W +/-5%	PCS	1.00	R190
CR0R22250410-00-00	CHIP RESISTOR 0603 2K2 OHM 1/10W 50V +/-5%	PCS	23.00	R65.66.67.73.85.139.1.241.216.300.302-306.208.209.299.174.29
CR0R22350410-00-00	CHIP RESISTOR 0603 22K OHM 1/10W 50V +/-5%	PCS	18.00	R168.214.173.27.26.29.28.18.19.229.147.148.87.(R2616789 9
CR0R22450410-00-00	CHIP RESISTOR 0603 220K OHM 1/10W 50V +/-5%	PCS	4.00	R215.238.252.138
CR0R22850410-00-00	CHIP RESISTOR 0603 2.2 OHM 1/10W 50V +/-5%	PCS	1.00	R110
CR0R27250410-00-00	CHIP RESISTOR 0603 2K7 OHM 1/10W 50V +/-5%	PCS	1.00	R270
CR0R27450410-00-00	CHIP RESISTOR 0603 270K OHM 1/10W 50V +/-5%	PCS	2.00	R262.R266
CR0R30350410-00-00	CHIP RESISTOR 0603 30K OHM 1/10W 50V +/-5%	PCS	2.00	R186.251
CR0R33150410-00-00	CHIP RESISTOR 0603 331 OHM 1/10W 50V +/-5%	PCS	0.00	1(R48 WOOF0 )
CR0R33250410-00-00	CHIP RESISTOR 0603 3K3 OHM 1/10W 50V +/-5%	PCS	2.00	R179.R307
CR0R33450410-00-00	CHIP RESISTOR 0603 330K OHM 1/10W 50V +/-5%	PCS	1.00	R149
CR0R33851000-00-00	RESISTOR 3.3 OHM 1/4W +/-5%	PCS	1.00	R90
CR0R33852000-00-00	RESISTOR 3.3 OHM 1/2W +/-5%	PCS	1.00	R54
CR0R39050410-00-00	CHIP RESISTOR 0603 39 OHM 1/10W 50V +/-5%	PCS	2.00	R199.200
CR0R39350410-00-00	CHIP RESISTOR 0603 39K OHM 1/10W 50V +/-5%	PCS	1.00	R91(R40.43 WOOF0 )
CR0R47150410-00-00	CHIP RESISTOR 0603 471 OHM 1/10W 50V +/-5%	PCS	4.00	R84.89.162.79
CR0R47250410-00-00	CHIP RESISTOR 0603 4K7 OHM 1/10W 50V +/-5%	PCS	7.00	R99.93.272.154.153.151.280
CR0R47350410-00-00	CHIP RESISTOR 0603 47K OHM 1/10W 50V +/-5%	PCS	14.00	R213.163.170.169.133.268.269.23.22.32.33.283.248.256(R38.42.
CR0R47450410-00-00	CHIP RESISTOR 0603 470K OHM 1/10W 50V +/-5%	PCS	1.00	R284
CR0R47550410-00-00	CHIP RESESTOR 0603 4M7 OHM 1/10W 50V +/-5%	PCS	1.00	R106
CR0R56150410-00-00	CHIP RESISTOR 0603 561 OHM 1/10W 50V +/-5%	PCS	1.00	R160
CR0R56250410-00-00	CHIP RESISTOR 0603 5K6 OHM 1/10W 50V +/-5%	PCS	7.00	R231.55.56.288.259(R124.125 AUX0 )
CR0R56450410-00-00	CHIP RESESTOR 0603 560K OHM 1/10W 50V +/-5%	PCS	2.00	R98.285

Part Code	Name/Description	Unit	Qty	Location
CR0R68150410-00-00	CHIP RESISTOR 0603 681 OHM 1/10W 50V +/-5%	PCS	1.00	R193
CR0R68250410-00-00	CHIP RESISTOR 0603 6K8 OHM 1/10W 50V +/-5%	PCS	7.00	R21.31.24.34.97.273.276(R41.45 WOOFO )
CR0R68350410-00-00	CHIP RESISTOR 0603 68K OHM 1/10W 50V +/-5%	PCS	4.00	R263.264.265.267
CR0R82250410-00-00	CHIP RESISTOR 0603 8K2 OHM 1/10W 50V +/-5%	PCS	4.00	R4.5.10.11
CR0R82350410-00-00	CHIP RESISTOR 0603 82K OHM 1/10W 50V +/-5%	PCS	3.00	R177.70.R247
CR0R82450410-00-00	CHIP RESESTOR 0603 820K OHM 1/10W 50V +/-5%	PCS	1.00	R64
DI0R14007020-00-00	RECTIFIER SILICON FOR 1N4007	PCS	3.00	D25.D2.D51
DI0R24148080-00-00	SIGNAL DIODE 1N4148 (1206) SMD (LL34)	PCS	29.00	D4.5.6.7.15.16.17.18.21.22.26.27.28.29.48.49.50.37.42.33.43.
DI0R30602081-00-00	CHIP ZENER SILICON 1206 6V2 1/2W SMD +/-2%	PCS	1.00	ZD2
DI0R30901080-00-00	ZENER SILICON 9V1 1/2W (1206) SMD +/-2%	PCS	2.00	ZD1.4
DI0R31005080-00-00	ZENER SILICON 10V 1206 1/2W SMD +/-2%	PCS	1.00	ZD5
EC0R10509051-01-00	1UF 50V +/-10% -40+105V (4X7MM) I=0.004CV OR 0.4(	PCS	1.00	C115(C39 WOOFO )
EC0R10609031-01-00	10UF 25V +/-10% -40+105V 4X7MM I=0.004CV or 0.4(	PCS	5.00	C153.155.20.182.215(C40.41.98WOOFO )
EC0R10704020-01-00	100UF 16V +/-20% -40+105V (5X11MM) I=0.004CV or 0.	PCS	3.00	C70.126.129
EC0R10709011-01-00	100UF 10V +/-20% -40+105V (5X7MM) I=0.004CV or 0.	PCS	19.00	C142.140.146.161.163.165.159.214.134.225.43.26.29.24.27.71.7
EC0R22509051-01-00	2.2UF 50V +/-10% -40+105V 4X7MM I=0.004CV or 0.4	PCS	0.00	(C42 WOOFO )
EC0R22604031-00-00	22UF 25V +/-20% -40+105V 4X7MM I=0.004CV or 0.4	PCS	3.00	C33.1.3
EC0R22704009-00-00	220UF 6.3V +/-10% 6X5MM -40+105V	PCS	2.00	C179.204
EC0R22704010-01-00	220UF 10V +/-20% -40+105V 6X12MM	PCS	1.00	C78
EC0R33809020-01-00	3300UF 16V +/-20% -40+105V (13X22MM) I=0.004CV or	PCS	1.00	C2
EC0R47409051-01-00	0.47UF 50V +/-10% -40+105V 4X7MM I=0.004CV or 0.	PCS	1.00	C73
EC0R47509051-01-00	4U7 50V +/-10% 40+105V 4X7MM I=0.004CV or 0.4( u	PCS	4.00	C157.156.197.19
EC0R47604011-01-00	47UF 10V +/-20% 4X7MM -40+105V	PCS	8.00	C175.93.205.59.57.210.91.97
FS0R01000050-00-01	FUSE VALUE 0.5A (6X30)MM	PCS	1.00	
IC0R11117000-00-00	IC AMS1117-3.3 SOT-223 3PIN	PCS	1.00	IC16
IC0R11117000-00-03	IC AMS1117-1.2V SOT-223 3PIN	PCS	1.00	IC19

Part Code	Name/Description	Unit	Qty	Location
IC0R17805500-00-00	IC 78L05J TO-92 3PIN	PCS	1.00	IC7
IC0R17805802-00-00	IC KA78R05 TO220F-4L 4PIN 1A	PCS	1.00	IC6
IC0R17808802-00-00	IC KA78R08 TO220F-4L 4PIN	PCS	1.00	IC8
IC0R30831703-02-00	AUTO__831UR 100PIN QFP(CPU) YELLEOW (CD+ESP+MP3+RDS+USB/FLASH)	PCS	1.00	IC4
IC0R34001000-00-00	IC IP4001D SOP-28	PCS	1.00	IC13
IC0R34558300-00-00	IC YM4558M SO-8PIN	PCS	2.00	IC9.10(IC2 WOOF0 )
IC0R35101700-00-00	IC TMC51F01M TQFP48	PCS	1.00	IC17
IC0R37032500-00-00	IC RESET KIA-7032P TO-92	PCS	1.00	IC5
IC0R37313300-00-00	IC TDA7313D SOP 28PIN	PCS	1.00	IC1
IC0R37388800-00-00	IC TDA7388 FIEXIWATTIS 25PIN	PCS	1.00	IC11
IC0R38310300-00-00	IC S5L8310X 100-TQFP-1414	PCS	1.00	IC18
IC0R91922700-00-00	IC S1L9226 TQFP48	PCS	1.00	IC12
IC0R95716300-00-00	IC SDRAM UT57L1616MC,16M,TSOP 50PIN	PCS	1.00	IC14
LE0R12035420-00-00	LED ROUND 3MM (RED) LEG.L=30MM	PCS	1.00	D3
PB0-CU501075-00-U1	P.C.B CU5010-U1 51.5X39 SS HB TH=1.6MM USB	PCS	0.00	1 tu0
PB0-CU501075-00-U2	P.C.B CU5010-U2 52.0X39.4 SS HB TH=1.6MM USB ( MMC )	PCS	1.00	
PB0-CU501075-00-U3	P.C.B CU5010-U3 52.0X39.4 SS HB TH=1.6MM USB ( MMC )	PCS	0.00	1 tu0
PB0RCU507175-01-A1	P.C.B CU5071-A1 172+10X159.60MM FR4 HB TH=1.6MM	PCS	1.00	
SK0R02030010-00-00	D TYPE CONNECTOR MALE 3P NONE WIRE PH=2.54MM	PCS	1.00	CN12
SK0R02100020-00-02	D TYPE CONNECTOR MALE 10P NONE WIRE PH=2.0MM	PCS	1.00	CN11
SK0R06080000-00-00	CONNECTOR 8P PH=2.54MM 90! 7.17X3.6MM	PCS	1.00	CN13
SK0R14180000-00-04	18PIN CONNECTOR FEMALE 2.5mm z	PCS	1.00	CN5
SK0R15161110-00-00	CONNECT SOCKET 1.0-11S-16PW PH=1.0MM	PCS	1.00	CN6
SK0R28000000-00-00	USB SOCKET SERIES USB	PCS	1.00	CN14
SK0R29412000-00-00	MMC SOCKET 412D06-09PCSA13 MMC ( CU5010-U2 )	PCS	1.00	
SW0R10040501-01-00	TACT SWITCH 4P L=5MM	PCS	1.00	SW3

Part Code	Name/Description	Unit	Qty	Location
SW0R50020200-00-00	DIP SWITCH DC 6P	PCS	0.00	1 SW
TR0R10435000-00-00	TRANSISTOR BD435 NPN TO-126ML	PCS	1.00	Q30
TR0R18050002-00-00	TRANSISTOR C8050C NPN TO-92	PCS	1.00	Q16
TR0R20772000-00-00	TRANSISTOR KSB772-Y PNP TO-126ML	PCS	1.00	Q18
TR0R61015806-00-00	CHIP TRANSISTOR HMBT1015 SOT-23 PNP (M6)	PCS	11.00	Q9.36.39.37.38.10.32.35.34.26.42(Q25
TR0R61815824-00-00	CHIP TRANSISTOR HMBT1815 SOT-23 NPN (L6)	PCS	17.00	Q6.12.13.14.7.11.33.40.29.28.8.19.1.31.17.15.27(Q20.21.41
TR0R68050002-00-00	CHIP TRANSISTOR ZX8050 SOT-23 NPN	PCS	4.00	Q2-5
TU0R50070200-00-00	AM/FM TUNER OIRT 7020 (OIRT VERSION) AM/FM647 (FM64-108MHZ)	PCS	1.00	
		89 :	138	



Part Code	Name/Description	Unit	Qty	Location
CR0R00051210-00-00	CHIP RESISTOR 0805 0 1/8W 100V +/-5%	PCS	3.00	J1.2.3
CR0R22150000-00-00	RESISTOR 221 OHM 1/8W +/-5%	PCS	2.00	R3.4
CR0R82050000-00-00	RESISTOR 82 OHM 1/8W +/-5%	PCS	1.00	J4
DI0R80023000-00-00	DIODE-IR EMITTING 4X4MM ST-23G	PCS	2.00	D103.104
DK0R30300007-00-00	CD DECK SCD-300( A C20q 7 )	PCS	1.00	
FC0R41609043-00-00	FLAT CABLE 16P L=90MM PH=1.0MM g 7D	PCS	1.00	
IM0-12010011-00-00	DEF	G	1.10	04" SMT:0.55G;05 SMT:0.55G
IM0-17000000-00-00	SOLDERING WIRE D=1.0MM 1H	G	4.00	04" FC:2G;05 FC:2G
IM0R21120010-00-00	TAPE ADHESIVE 1/2 1/2IJCK	M	6.00	04" FC:3CM;05 FC:3CM
PB0R96000400-25-04	P.C.B AS-9600-04 44X91.5MM SS HB TH=1.2MM	PCS	1.00	
PB0R96000400-25-05	P.C.B AS-9600-05 74X35MM SS HB TH=1.2MM	PCS	1.00	
SK0R02040020-00-02	D TYPE CONNECTOR WAFER 4PIN PH=2.0MM	PCS	1.00	CON103
SK0R15170001-00-00	CONNECT SOCKET 17P PH=1.0MM	PCS	1.00	
SW0R10001110-00-00	SWITCH-TACT (CHECK S/W SW-111)	PCS	1.00	SW2
TB0R01010000-00-00	PVC TUBE D=1MM UVWXC S	CM	16.00	04" FC:8CM;05 FC:8CM
		89 :	15	

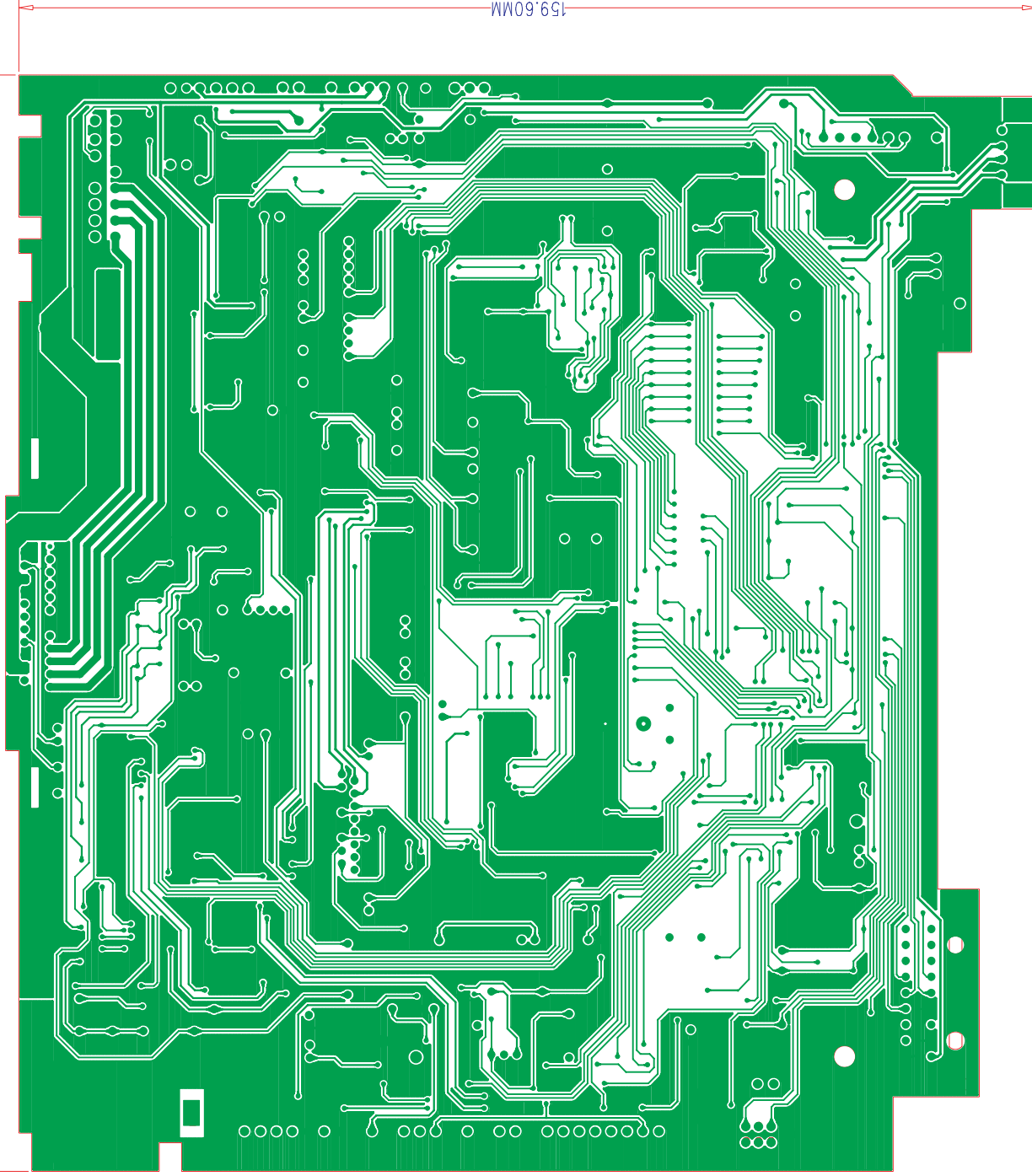
Part Code	Name/Description	Unit	Qty	Location
CC0R10115500-00-00	CHIP CAP 0805 Z =0.8MM 101P NPO 50V +/-5%	PCS	2.00	C6.C7
CC0R10215500-00-00	CHIP CAP 0805 Z =0.8MM 102P X7R 50V +/-10%	PCS	1.00	C1
CC0R10415500-00-00	CHIP CAP 0805 Z =1.25MM 104P X7R 50V +/-10%	PCS	3.00	C2.C3.C4
CC0R10510300-00-00	CHIP CAP 0805 Z =1.25MM 1UF X7R 25V +/-10%	PCS	0.00	C5(N YL0 )
CR0R00051210-00-00	CHIP RESISTOR 0805 0 1/8W 100V +/-5%	PCS	2.00	RJ1.RJ2
CR0R10050210-00-00	CHIP RESISTOR 0805 10 1/8W 100V +/-5%	PCS	1.00	R4
CR0R10150210-00-00	CHIP RESISTOR 0805 101 OHM 1/8W 100V +/-5%	PCS	0.00	R1(N YL0 )
CR0R10250210-00-00	CHIP RESISTOR 0805 1K OHM 1/8W 100V +/-5%	PCS	11.00	R11.R12.R13.R14.R15.R16.R22.R33. R52.R48.R54
CR0R15250210-00-00	CHIP RESISTOR 0805 1K5 OHM 1/8W 100V +/-5%	PCS	3.00	R21.R32.R43
CR0R18150210-00-00	CHIP RESISTOR 0805 181 OHM 1/8W 100V +/-5%	PCS	2.00	R27.R38
CR0R22150210-00-00	CHIP RESISTOR 0805 221 OHM 1/8W 100V +/- 5%	PCS	2.00	R26.R37
CR0R22250210-00-00	CHIP RESISTOR 0805 2K2 OHM 1/8W 100V +/-5%	PCS	4.00	R20.R31.R39.R42
CR0R33150210-00-00	CHIP RESISTOR 0805 331 OHM 1/8W 100V +/-5%	PCS	2.00	R24.R36
CR0R33250210-00-00	CHIP RESISTOR 0805 3K3 OHM 1/8W 100V +/-5%	PCS	2.00	R19.R30
CR0R47150210-00-00	CHIP RESISTOR 0805 471 OHM 1/8W 100V +/-5%	PCS	2.00	R25.R35
CR0R47250210-00-00	CHIP RESISTOR 0805 4K7 OHM 1/8W 100V +/-5%	PCS	9.00	R2.R3.R5.R7.R8.R9.R10.R18.R29
CR0R47350210-00-00	CHIP RESISTOR 0805 47K OHM 1/8W 100V +/-5%	PCS	2.00	R6.R44
CR0R68150210-00-00	CHIP RESISTOR 0805 681 OHM 1/8W 100V +/-5%	PCS	3.00	R23.R34.R53
CR0R82150210-00-00	CHIP RESISTOR 0805 821 OHM 1/8W 100V +/-5%	PCS	3.00	R49.R50.R51
CR0R82250210-00-00	CHIP RESISTOR 0805 8K2 OHM 1/8W 100V +/-5%	PCS	2.00	R17.R28
CR0R82350210-00-00	CHIP RESISTOR 0805 82K OHM 1/8W 100V +/-5%	PCS	1.00	R45
DI0R24148080-00-00	SIGNAL DIODE 1N4148 (1206) SMD (LL34)	PCS	6.00	D1.D2.D3.D4.D5.D6
IC0R36523701-00-00	IC PT6523 LQFP64 10X10mm	PCS	1.00	IC1
LD0R0CU50206-02-00	BLACK MASK DISPLAY CU5020 80X21MM 55PIN	PCS	1.00	
LE0R50080591-00-00	CHIP ULTRA (WHITE) LED 0805 (17-21/W1D-ANPHY/3T*)	PCS	3.00	LED1.LED2.LED3
LE0R56120680-00-00	CHIP LED (ORANGE) 0805 (HT-170D)	PCS	22.00	LD1.LD2.LD3.LD4.LD5.LD6.LD7.LD8. LD9.LD10 LD11.LD12.

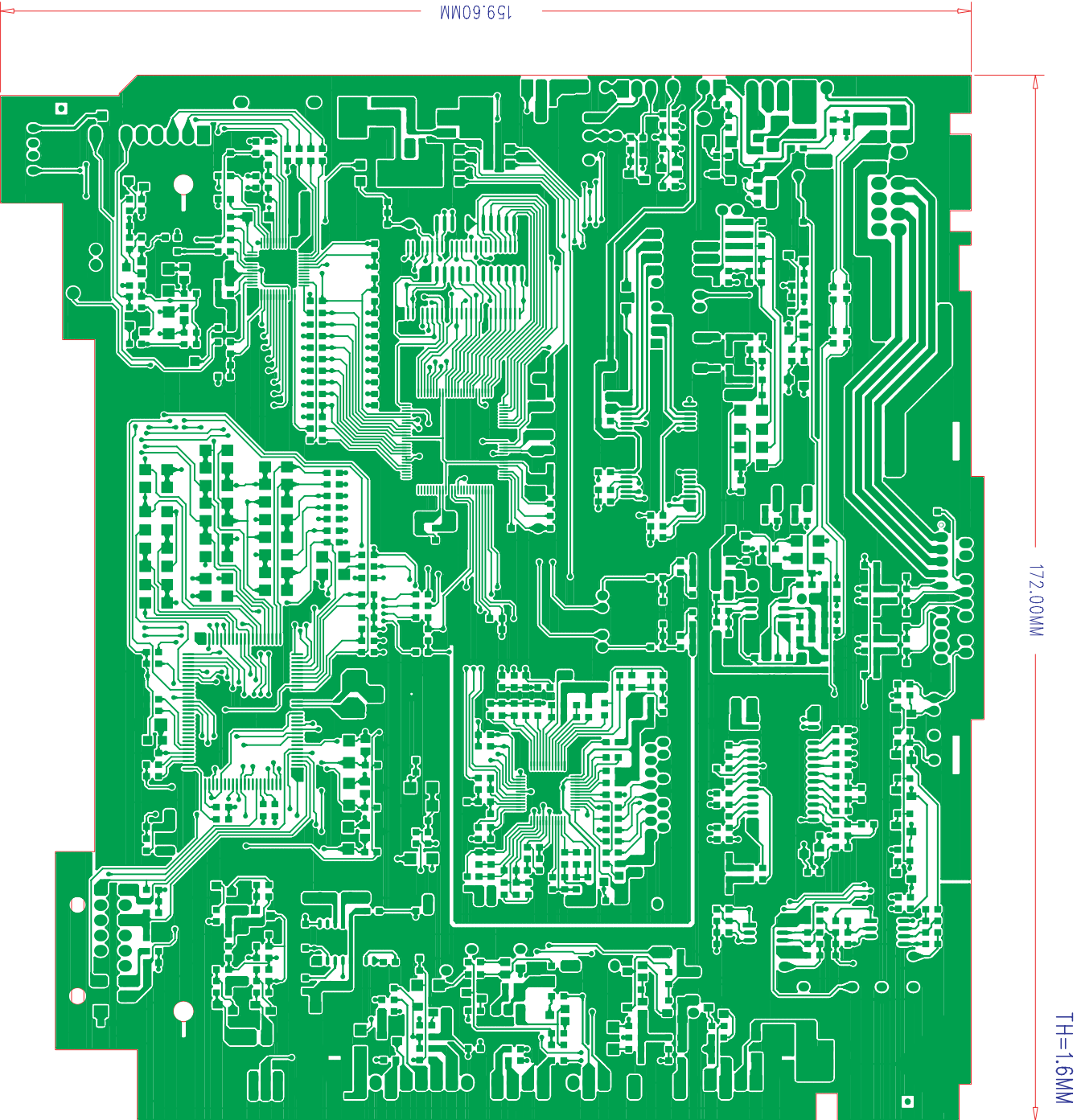
Part Code	Name/Description	Unit	Qty	Location
PB0RCI507474-00-H1	P.C.B CI5074-H1 14X11.6MM FR4 HB TH=1.2MM	PCS	1.00	
PB0RCU507375-07-D1	P.C.B CU5073-D1 143.8X41.5MM FR4.HB TH=1.6MM	PCS	1.00	
SK0R05000000-01-00	AUDIO INPUT CONNECT SOCKET	PCS	1.00	
SK0R13180000-00-04	18PIN CONNECTOR MALE HFS 2.5MM z B	PCS	1.00	
SW0R10020500-00-00	TACT SWITCH 2PIN 5MM	PCS	2.00	
SW0R10020501-00-00	TACT SWITCH 2PIN 5MM SMD	PCS	17.00	
VR0R80001150-00-00	ENCODER VOLUME L=11.5MM EC110201MRB-HAE-020	PCS	1.00	
ZE0R93CU5010-00-00	ZEBRA CONNECTOR PINK COLOR 76X8.3X2.0MM	PCS	1.00	
		89 :	34	

TH=1.6MM

172.00MM

159.60MM

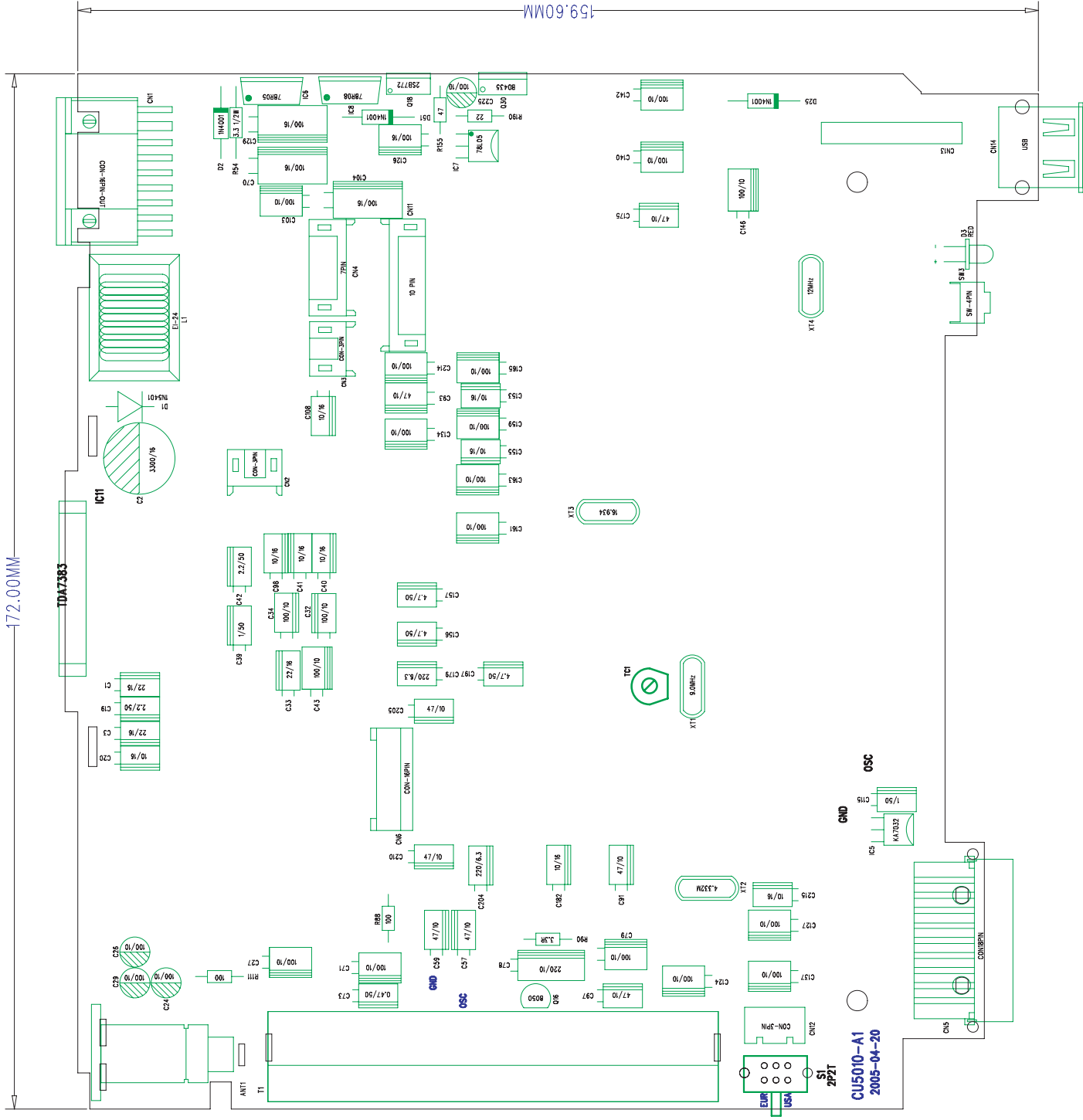




TH=1.6MM

172.00MM

159.60MM



159.60MM

172.00MM

TH=1.6MM

